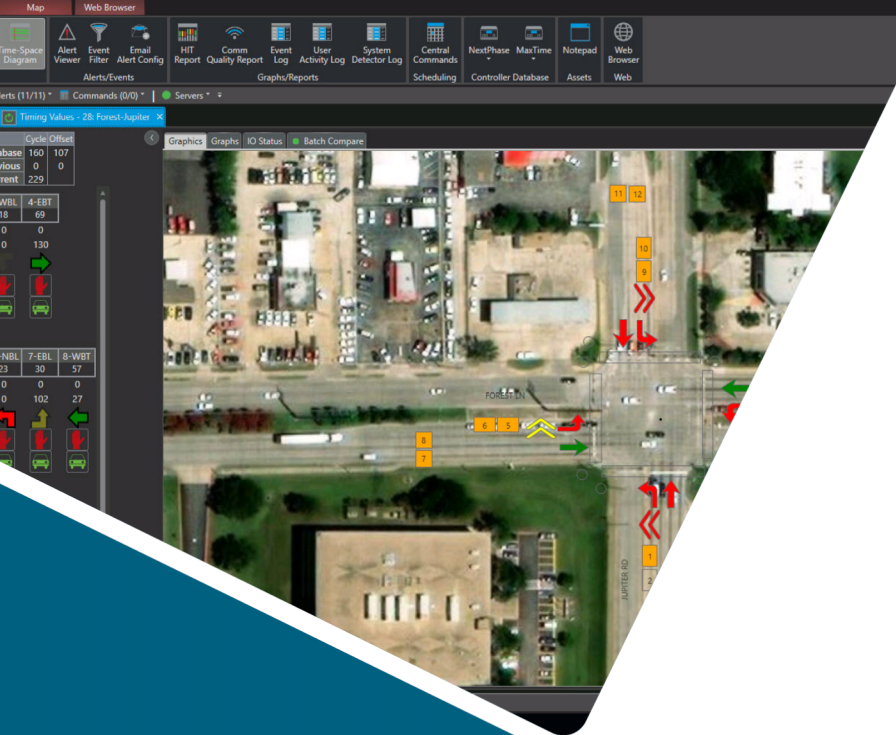


LEARN • COLLABORATE • SHARE • ENERGIZE



Kimley»»Horn

SMART CITIES

TECHNOLOGY FORUM

IndyGo Purple Line BRT

»»KITS

A Kimley-Horn Software Solution

»»Kadence

A Kimley-Horn Software Solution

»»Traction

A Kimley-Horn Software Solution

Michael Ruelle, P.E.



- Originally from Michigan
- Graduated from Michigan State University
- Have been with Kimley-Horn for 22 years
- Officed in Denver, Dallas, Phoenix, Milwaukee, Chicago, and Atlanta
- Practice area is in Transportation Technology

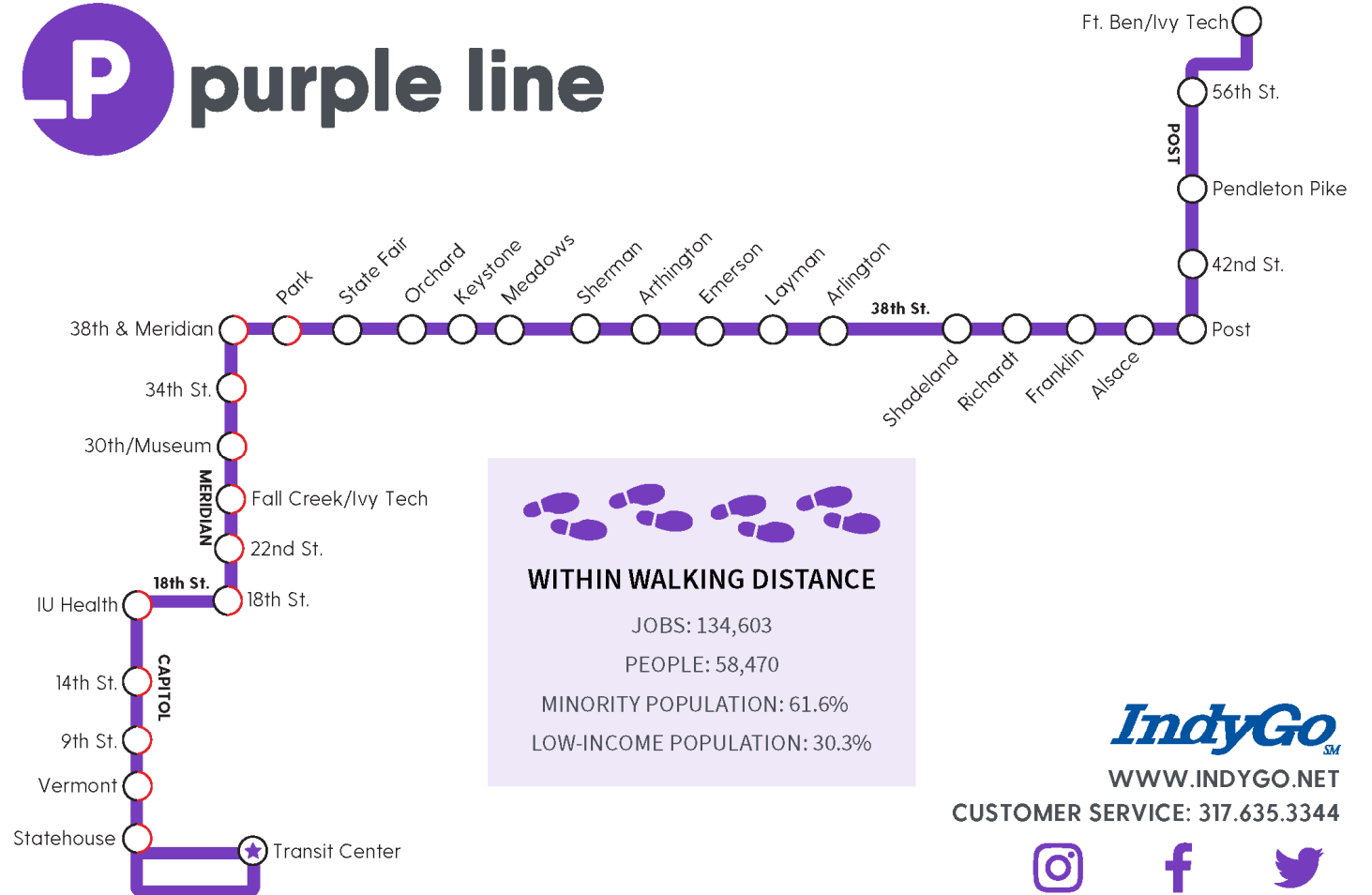


Purple Line Bus Rapid Transit

- 25 signalized intersections along 38th St and Post St



purple line



WITHIN WALKING DISTANCE

JOBS: 134,603

PEOPLE: 58,470

MINORITY POPULATION: 61.6%

LOW-INCOME POPULATION: 30.3%

IndyGoSM

WWW.INDYGO.NET

CUSTOMER SERVICE: 317.635.3344



@IndyGoBus



@IndyGoBus



@IndyGoBus

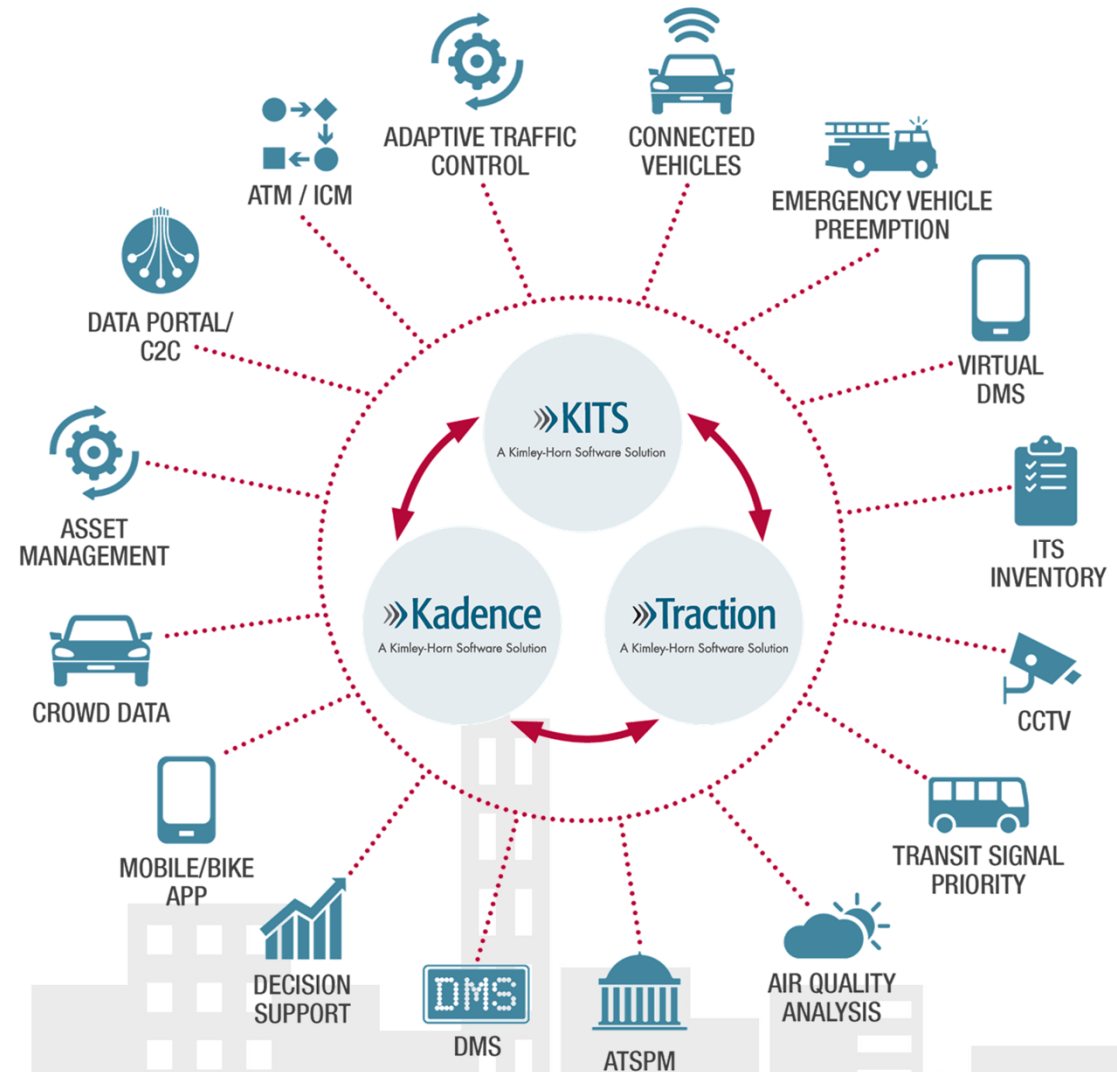
Proposed Solution

»» KITS

»» Kadence

»» Traction

ATSPM
Automated Traffic Signal Performance Measures



Traction Smart Cities Ecosystem



»» **TractionLive**

View real-time system status from your web browser or mobile device.

»» **TractionTravel**

Collect, analyze, and automate travel time data and alerts.

»» **TractionPriority**

Provide centralized priority for all modes of transportation.

»» **TractionMetrics**

Visualize performance data with streamlined dashboards and reports.

»» **TractionConnect**

Share and receive connected vehicle data and traveler information messages.

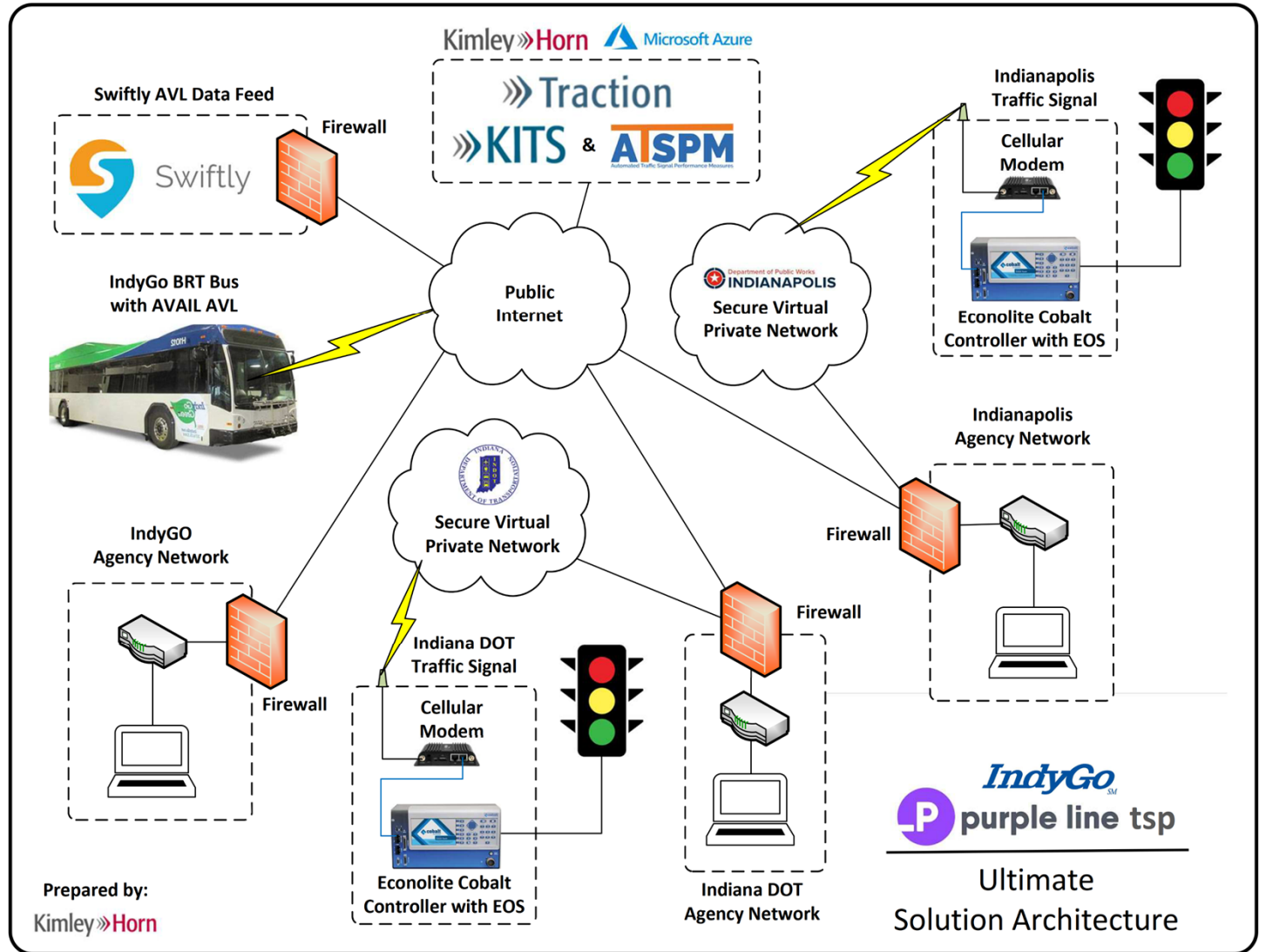
»» **TractionWorkflow**

Manage assets, inventory, and work order tasks.

Solution Architecture



indy.gov



Potential for Future Expansion

- Retrofit of Red Line BRT
- Blue Line BRT
- Local Bus Routes
- KITS/Kadence Pilot Expansion
- Connected Vehicle Pilot Expansion
- EVP with Indianapolis Fire Department



BLUE LINE BRT SEGMENT MAP





Thank you!