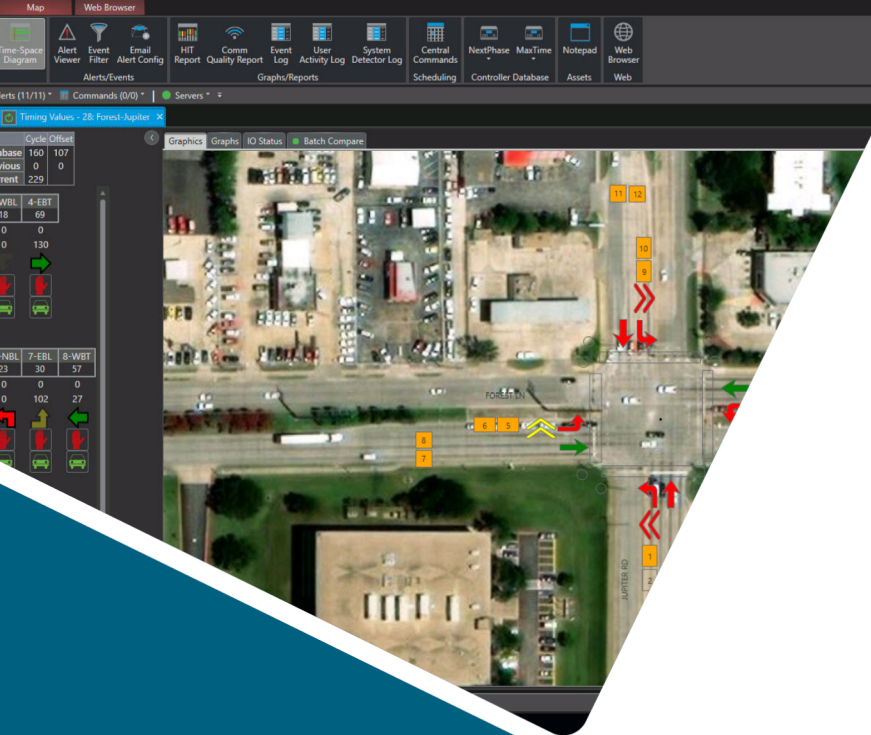


LEARN • COLLABORATE • SHARE • ENERGIZE



Kimley»Horn

SMART CITIES

TECHNOLOGY FORUM

ATSPM

»»KITS

A Kimley-Horn Software Solution

»»Kadence

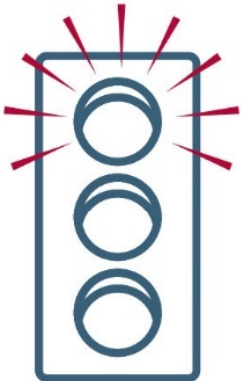
A Kimley-Horn Software Solution

»»Traction

A Kimley-Horn Software Solution

ATSPM Overview

Field



Traffic Signals



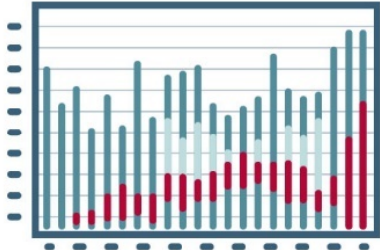
Log Files



Traffic Management Center



Database



Performance Measure Graphs

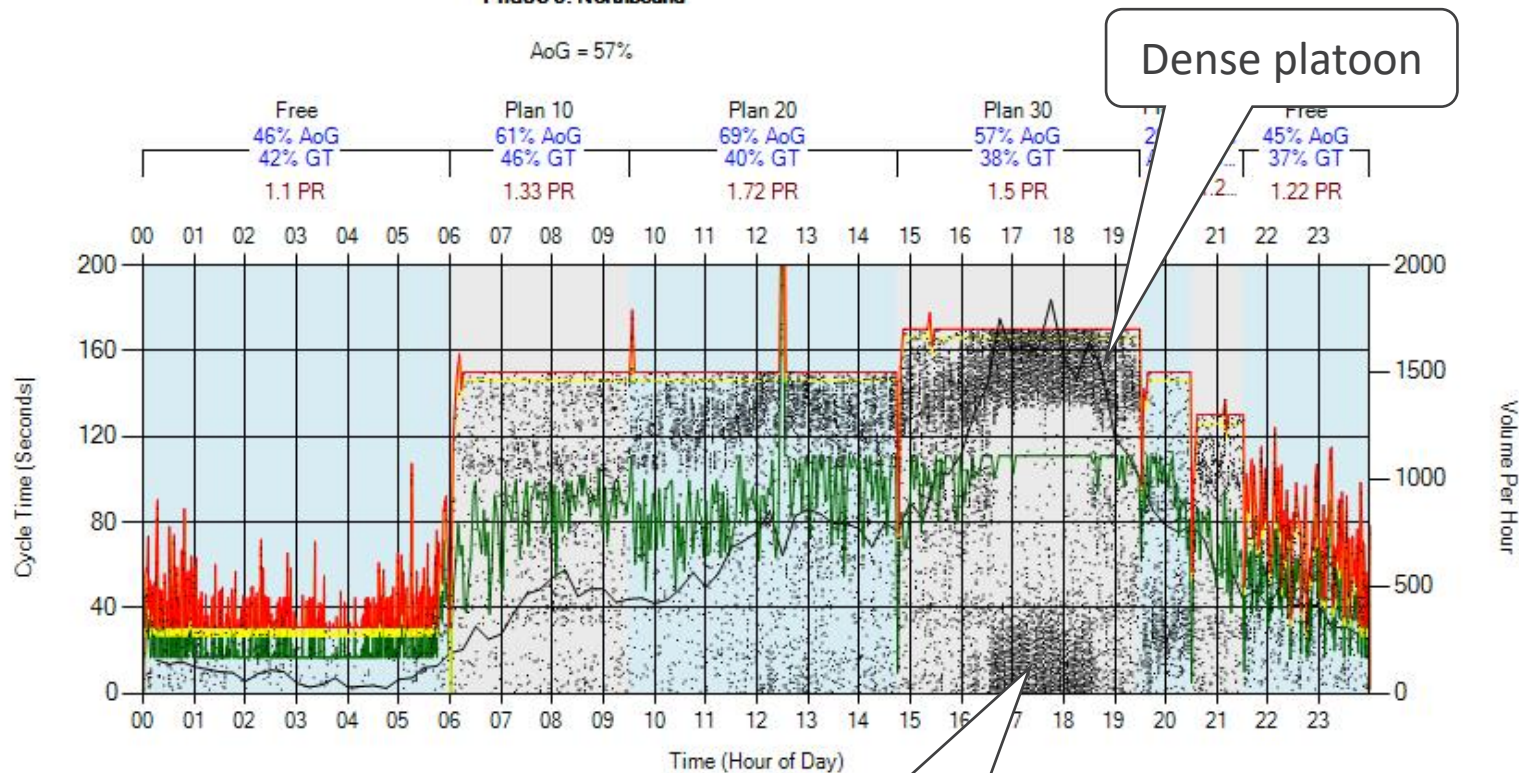
Purdue Coordination Diagram

SR 13 @ Briarwood Road - SIG#7379
 Thursday, October 18, 2018 12:00 AM - Thursday, October 18, 2018 11:59 PM
 Advanced detector located 300 ft. upstream of stop bar

Phase 6: Northbound

AoG = 57%

- Volume Per Hour
- Detector Activation
- Change to Green
- Change to Yellow
- Change to Red
- AoG - Arrival On Green
- GT - Green Time
- PR - Platoon Ratio



ATSPM History

- Began working with system in 2016 with ATSPM 2.0
- Attended UDOT “Train the Trainer” workshop in 2017
- Contributed more than 20,000 lines of code back to open-source repository



-> Signal Metrics

Selected Signal

Signals

Region

Metric Type

Filter

Signal List

Map

Metric Settings

Metric Type

- Purdue Phase Termination
- Split Monitor
- Pedestrian Delay
- Preemption Details
- Turning Movement Counts
- Purdue Coordination Diagram
- Approach Volume
- Approach Delay
- Arrivals On Red
- Approach Speed
- Yellow and Red Actuations
- Purdue Split Failure

Time Y Axis Maximum

Volume Y Axis Maximum

Volume Bin Size

Dot Size

Show Plan Statistics

Show Volumes

[Export Data](#)

Upload Current Data

Dates

Start Date

End Date

Reset Date

Sun	Mon	Tue	Wed	Thu	Fri	Sat
31	1	2	3	4	5	6
7	8	9	10	11	12	13
14	15	16	17	18	19	20
21	22	23	24	25	26	27
28	29	30	31	1	2	3
4	5	6	7	8	9	10

1694 traffic signals

Create Metrics

Version 3.1.5. Release Date: May 2016

Signal

Signal Selection

Signal ID

11030 Select Bouldercrest Road @ Key Road

Signal List

Signal Map

Area

Jurisdiction

Region

Metric Type

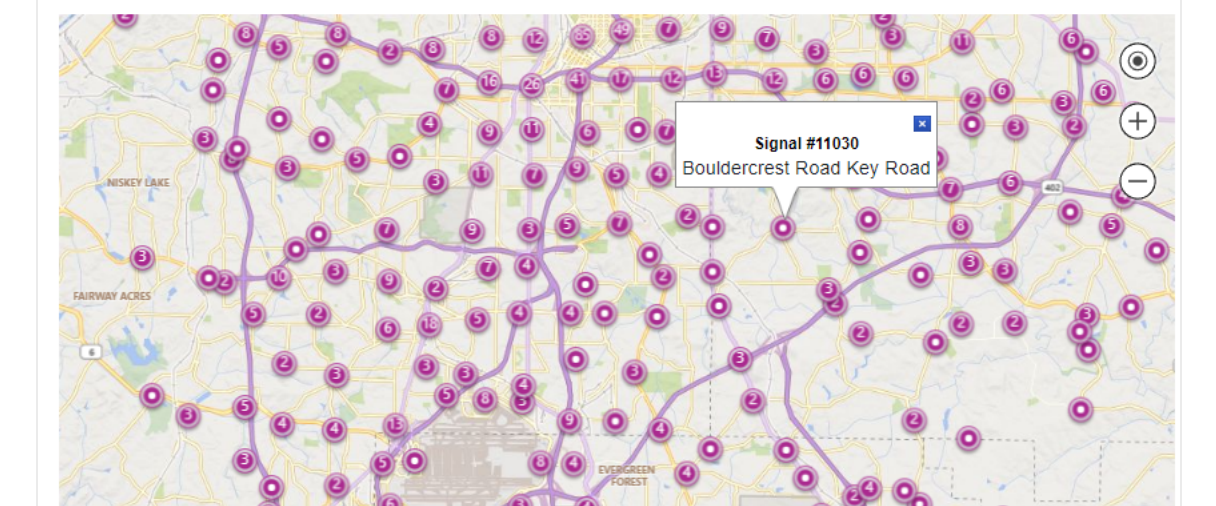


Chart Selection

Metrics List

- Purdue Phase Termination
- Split Monitor
- Pedestrian Delay
- Preemption Details
- Timing and Actuation
- Purdue Split Failure
- Turning Movement Counts
- Approach Volume
- Approach Delay
- Arrivals on Red
- Purdue Coordination Diagram
- Left Turn Gap Analysis
- Wait Time

Phase Termination Options

Y-axis Max

Auto

Consecutive Count

3

Show Plans

Show Ped Activity

Date Selection

Start Date

10/23/2023 12:00 AM

End Date

10/23/2023 11:59 PM

« October 2023 »

Su	Mo	Tu	We	Th	Fr	Sa
1	2	3	4	5	6	7
8	9	10	11	12	13	14
15	16	17	18	19	20	21
22	23	24	25	26	27	28
29	30	31				

ATSPM 4.3.1 – What's New?

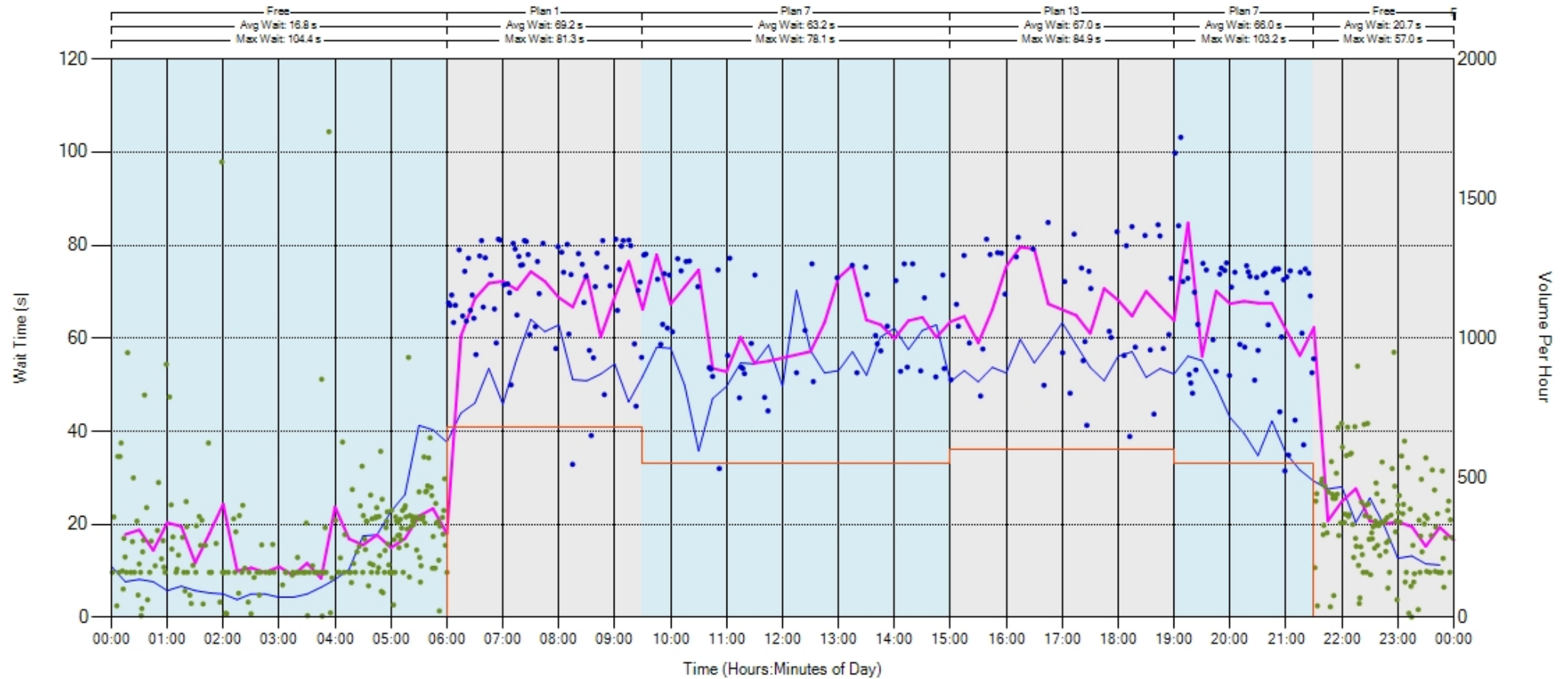
Wait Time

Redwood Road @ 3500 South - SIG#7102
Monday, October 3, 2022 12:00 AM - Tuesday, October 4, 2022 12:00 AM

Phase 2: NBT Ph2

Advance + Stop Bar Detection

- Volume Per Hour
- Gap Out
- Max Out
- Force Off
- Unknown
- Average Wait
- Programmed Split



Additional Enhancements

- Left Turn Gap Report
- Configurable default options and thresholds
- Jurisdiction and area filters
- Read-only signal configuration
- Additional bug fixes

Signal 7274

Version
8/6/2021 - Now a Cobalt

Controller Type	Description	Primary Name	Secondary Name	Latitude	Longitude	Display On Map	All Peds are 1:1
EOS	Region 2	Foothill Drive	VA Hospital Ped	40.758542	-111.842152	<input checked="" type="checkbox"/>	<input checked="" type="checkbox"/>

Approaches

Direction	Description	Protected Phase	Permissive Phase	Pedestrian Phase	Protected Phase Overlap	Perm. Phase Overlap	Ped. Phase Overlap	Ped. Detector(s)	Approach Speed (MPH)
Westbound	WBT Ph2	2			<input type="checkbox"/>	<input type="checkbox"/>	<input type="checkbox"/>		40
Eastbound	EBT Ph6	6			<input type="checkbox"/>	<input type="checkbox"/>	<input type="checkbox"/>		40

Detectors

Detector ID	Det. Channel	Direction	Phase	Perm. Phase	Overlap	Enabled	Detection Types	Detection Hardware	Latency Correction	Movement Type	Lane Number	Lane Type	Dist. From Stop Bar	Decision Point	Move. Delay	Min Speed Filter	Comment
727402	2	WB	2		False	True	Advanced Count Advanced Speed	Wavetronix Advance	0	Thru	1	Vehicle	400			5	
727404	4	EB	6		False	True	Advanced Count Advanced Speed	Wavetronix Advance	0	Thru	1	Vehicle	400			5	

ATSPM 4.3.2 KH – What's New?

ATSPM 4.3.2 KH

- Excel import for signals
- Delete comments on signals and detectors
- SFTP polling
 - TFTP coming soon!
- Watchdog – signal exclusion

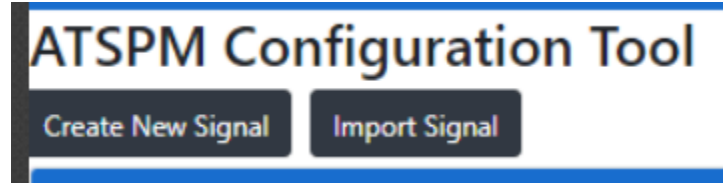


Chart Notes [Add Comment](#)

Date	Comment	Metrics Applied To	
10/23/2023 2:10:51 PM	Construction on 11/1	PPT	Delete

Hi-Res Data Exchange

