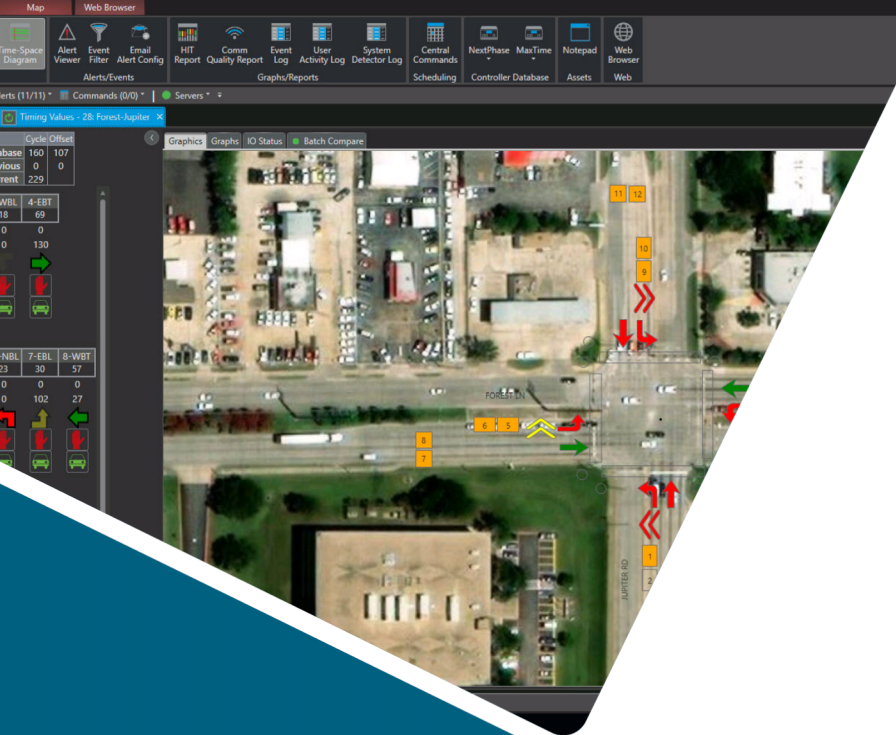


LEARN • COLLABORATE • SHARE • ENERGIZE



Kimley»»Horn

SMART CITIES

TECHNOLOGY FORUM

Smart St Augustine

»»KITS

A Kimley-Horn Software Solution

»»Kadence

A Kimley-Horn Software Solution

»»Traction

A Kimley-Horn Software Solution

Our nation's first city – the oldest continuous occupied European settlement in continental U.S. founded in 1565



Kimley-Horn

SMART CITIES

in Florida north of St. Augustine in 1513

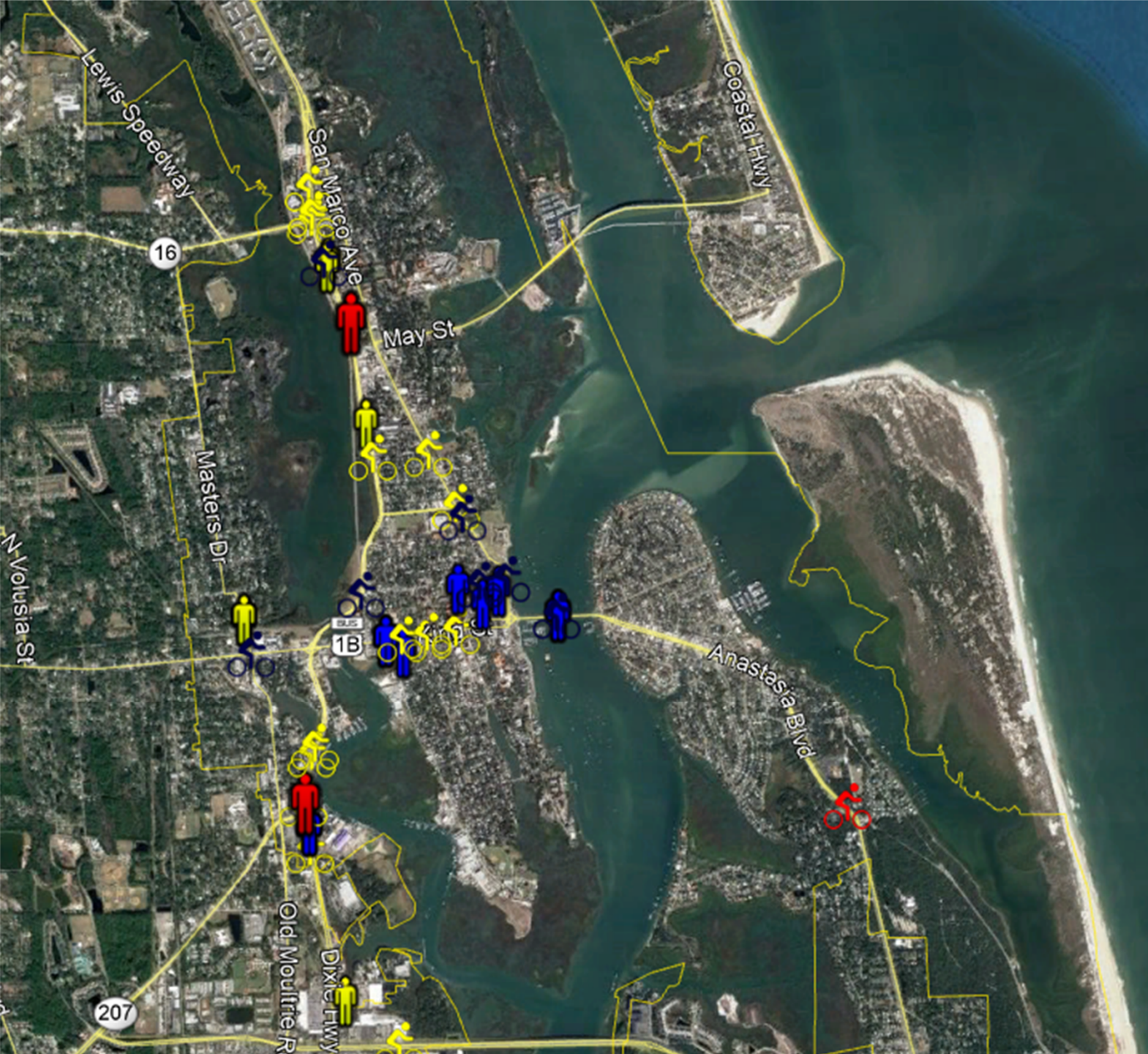
TECHNOLOGY FORUM



- 15,000 residents
- **6 million visitors**
- Want historic charm
- Do not want traffic congestion
- Want walkable community
- Want on-street parking



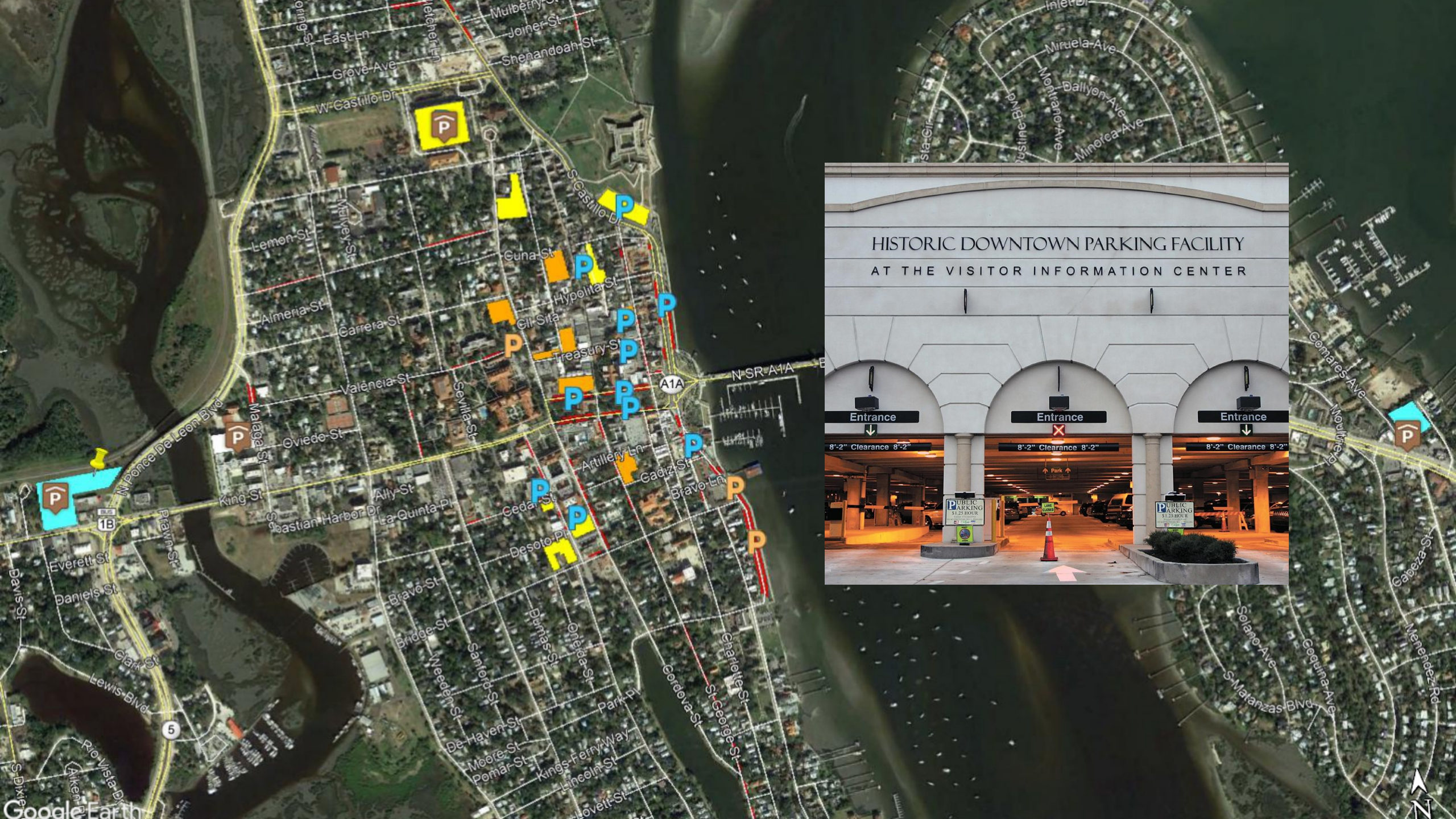
Safety



Florida School for Deaf and Blind

- Greater accessibility in the community
- Other elder and ADA needs throughout the city as well
- 600 students = 4% residents





HISTORIC DOWNTOWN PARKING FACILITY
AT THE VISITOR INFORMATION CENTER





Bridge of Lions



Equity

- Areas where more than 20% of the population live in poverty
- 50% of residents live in an area of persistent poverty



Sea Level Rise

> 30 events per year in 2022



Solutions



Make the nation's first city the nation's smartest city.

Pedestrians



Sensors at crossings
Enhanced lighting

Traffic



Connected vehicle systems
Bridge closure notification system
Information sharing

Open Data



Open data sources

Streetlights



Light sensors
LED conversion

Bicyclists



Sensors at crossings
Enhanced lighting

Resiliency



Sensors and modeling
to plan for sea-level rise

EV Charging



EV charging in
public parking

Parking



Parking space sensors
Parking information
Historic Downtown Garage
Special event management

Public Wi-Fi



Wi-Fi for underserved
Integrated payment systems

Access

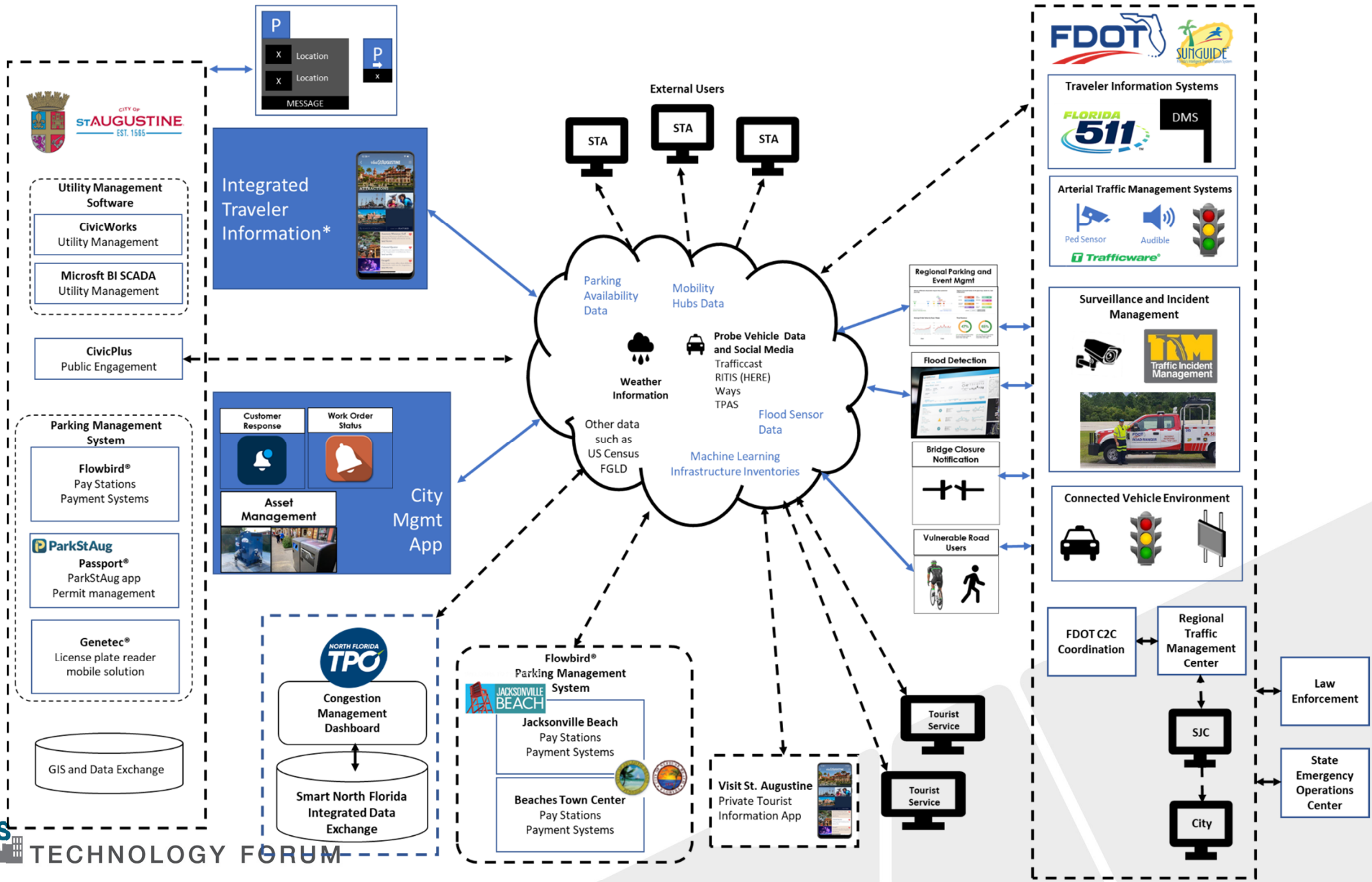


Access to health care
and social services

Waste Mgmt

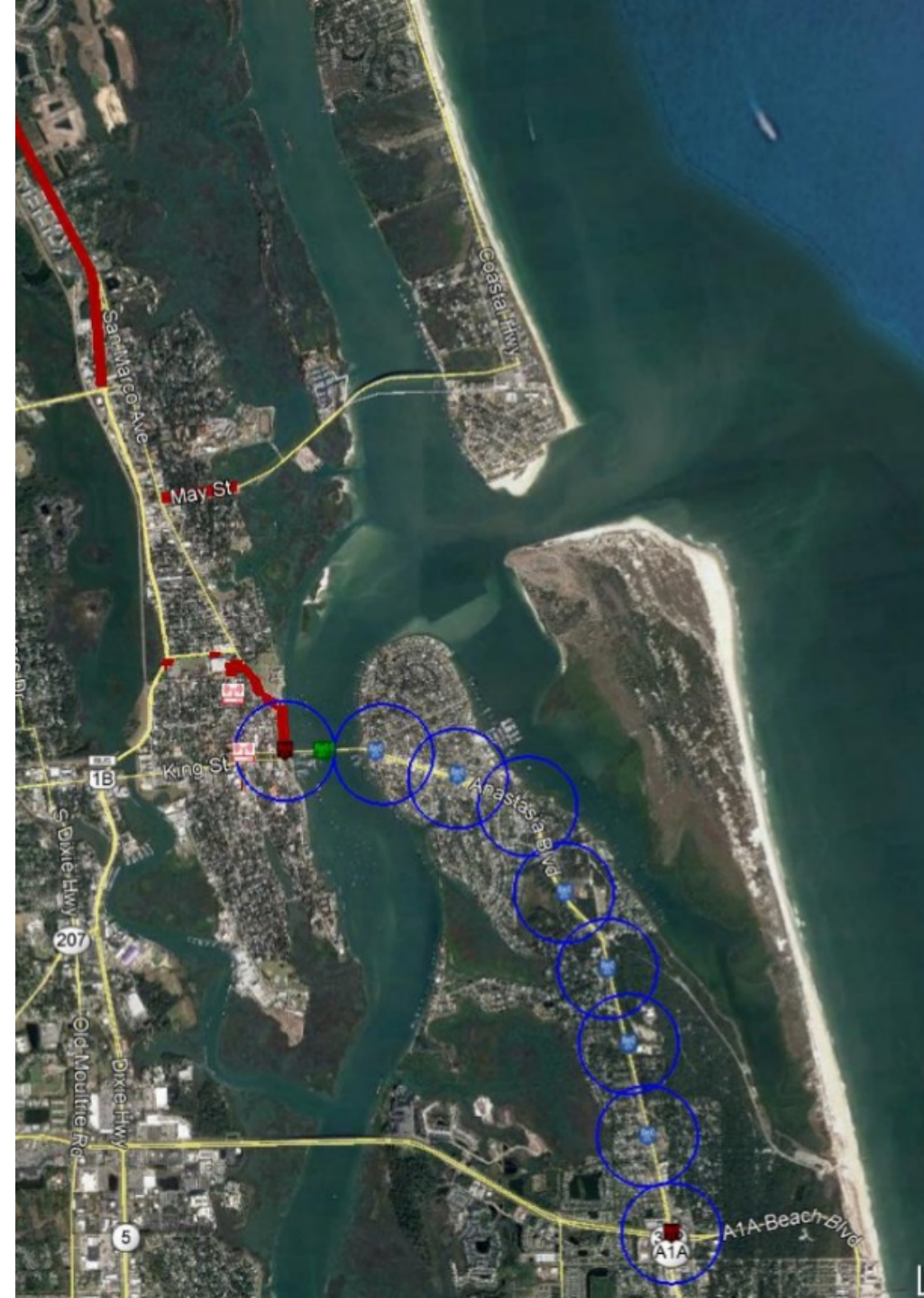


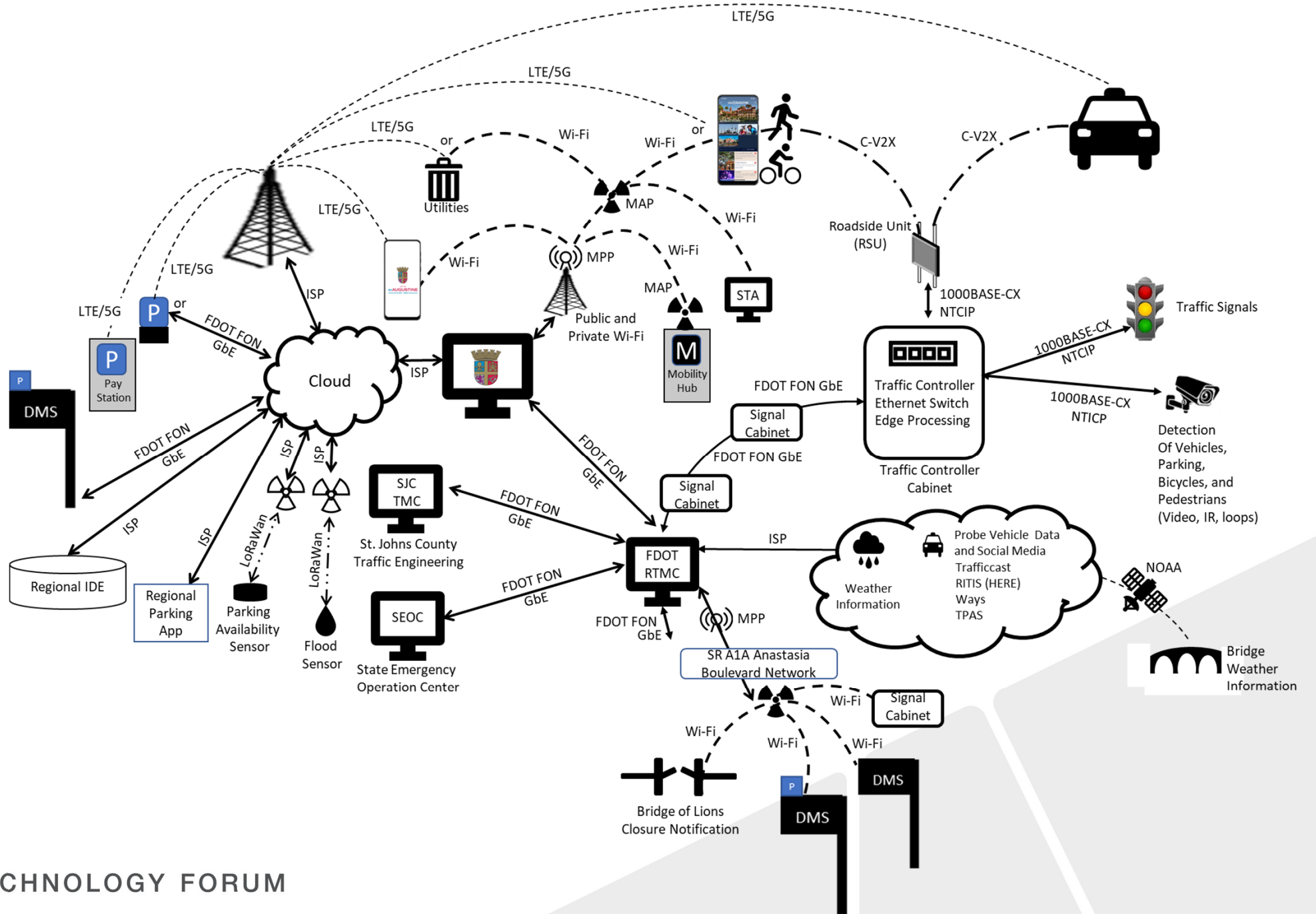
Smart waste management



Communications

- Complete fiber
- Private point-to-point





Parking and Event Management (Downtown, Anastasia and Amphitheatre)



Travel Options



Bicycle and Pedestrian Safety

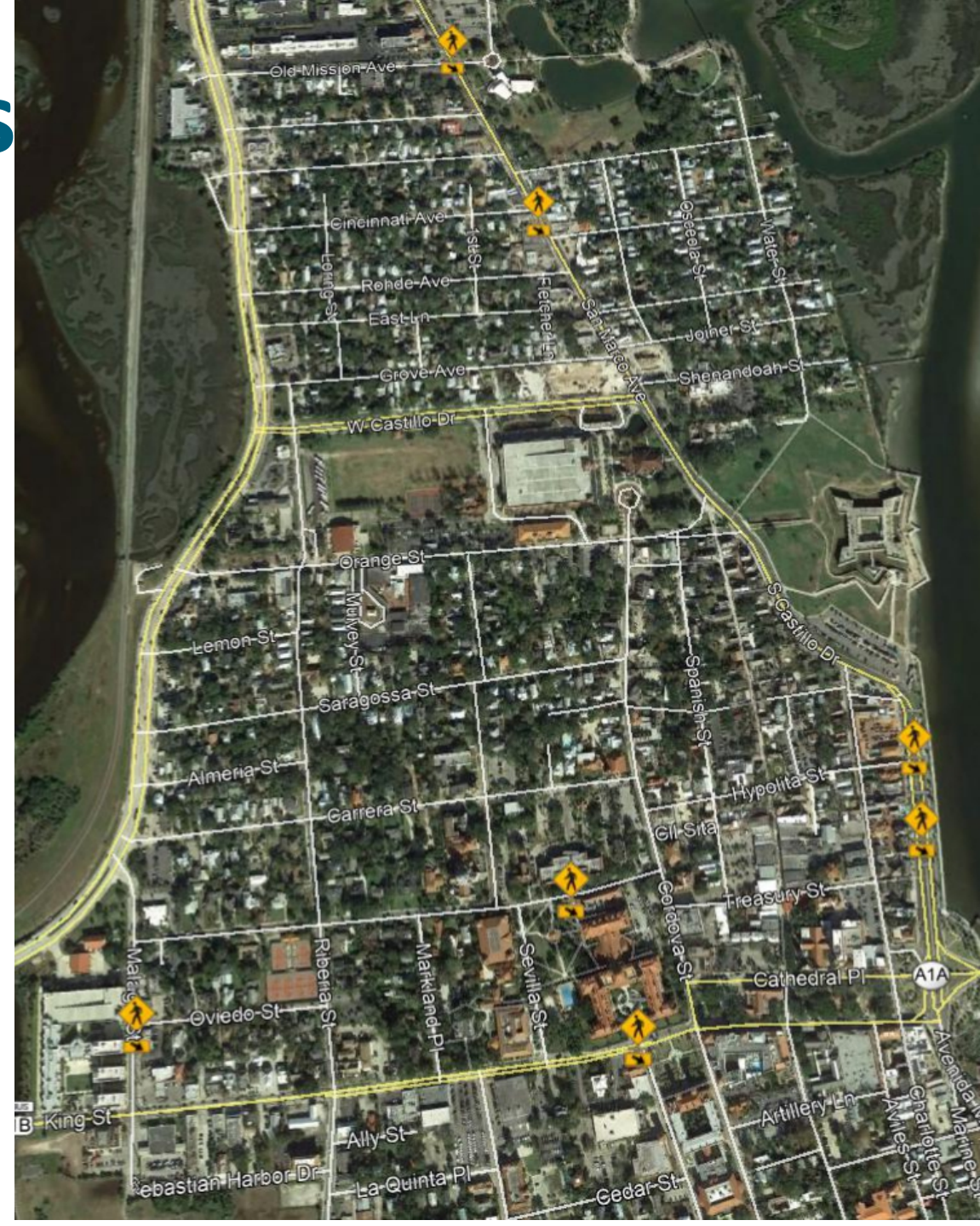


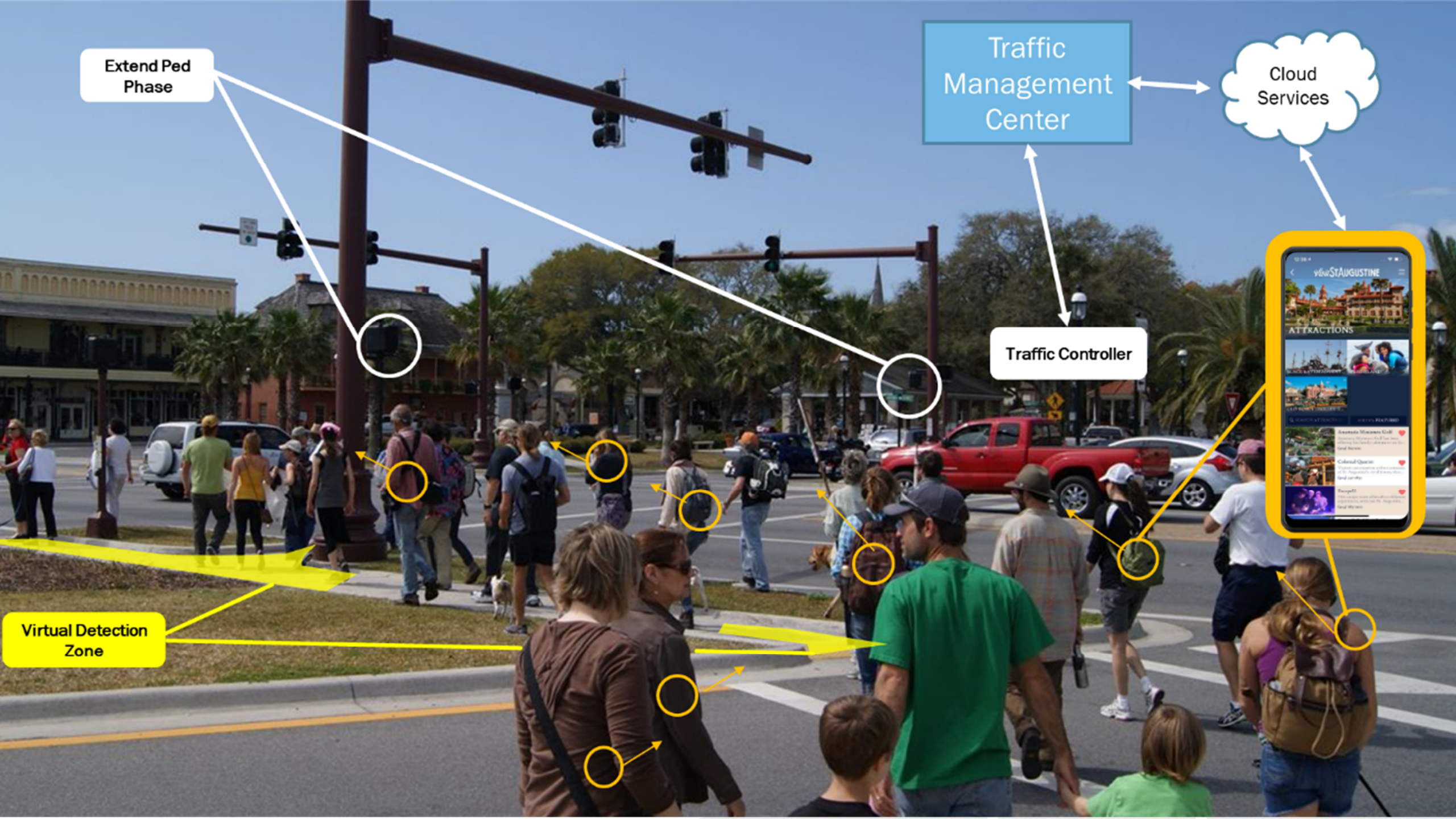
Advertising



Bicyclists and Pedestrians

- Passive detection
- Audible countdown signals
- Green time extensions
- Basic Safety Messages (BSM)
- Enhanced lighting at crossings
- Mobility hubs



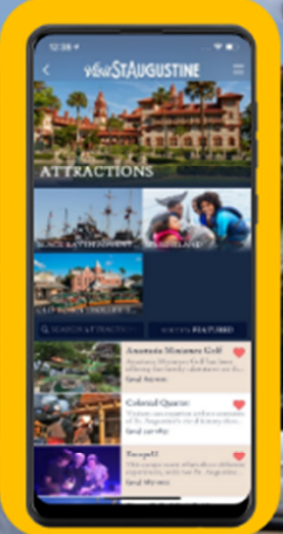


Extend Ped Phase

Traffic Management Center

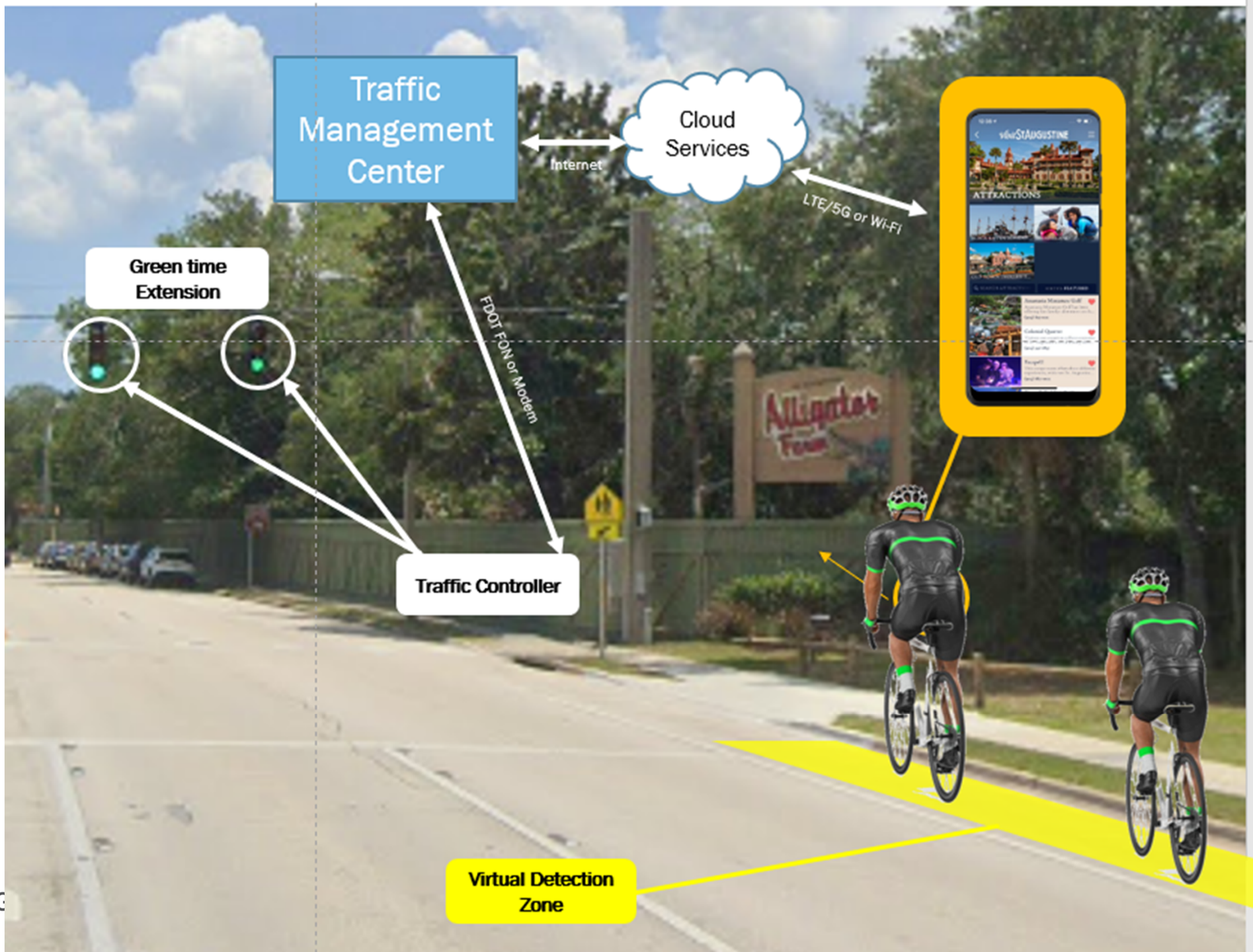
Cloud Services

Traffic Controller



Virtual Detection Zone





Smart Lighting Pilots

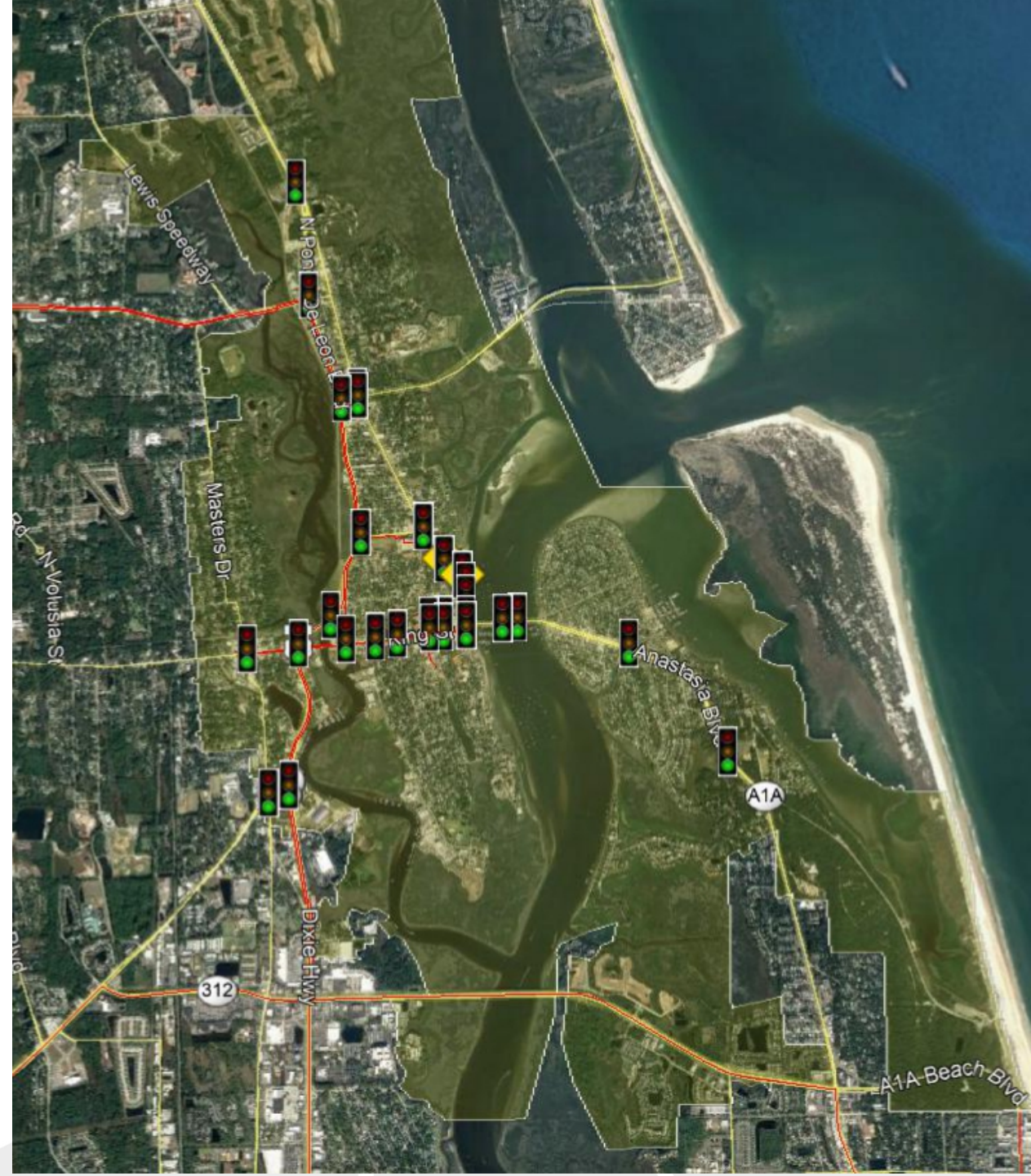


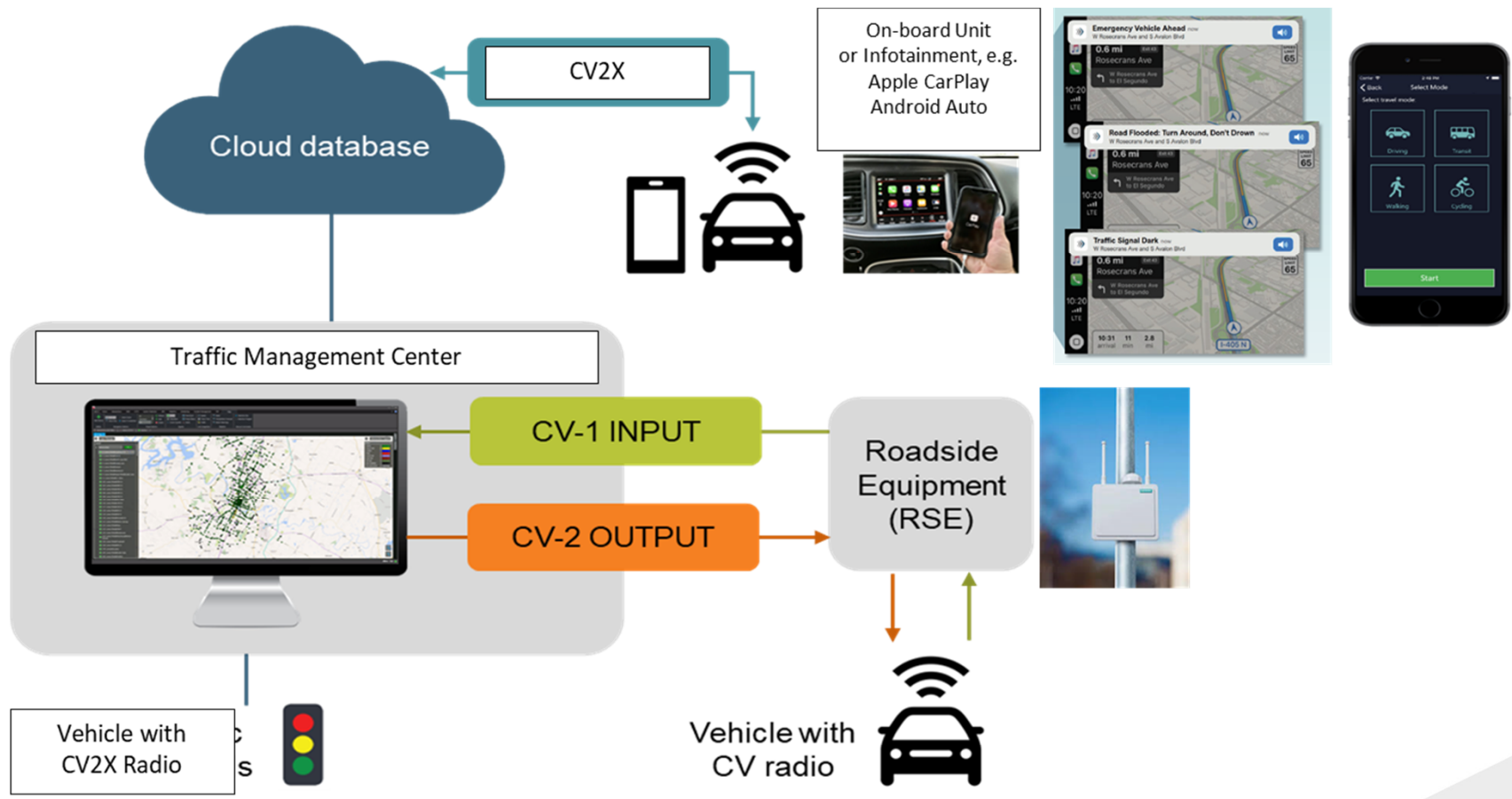
<https://www.floriance.eu/apl/>

- European Standards Committee Standard EN 13201 Dynamic Road Lighting
<https://www.interreg-central.eu/Content.Node/Dynamic-Light/04-DL-Handbook-about-interpretation-of-EN-13201.pdf>
- European Union Institute (ENI) Standard 160351 LED Street Lighting
[Documents download module \(europa.eu\)](https://www.europa.eu/press-communication/infographic/led-street-lighting)

Connected Vehicles

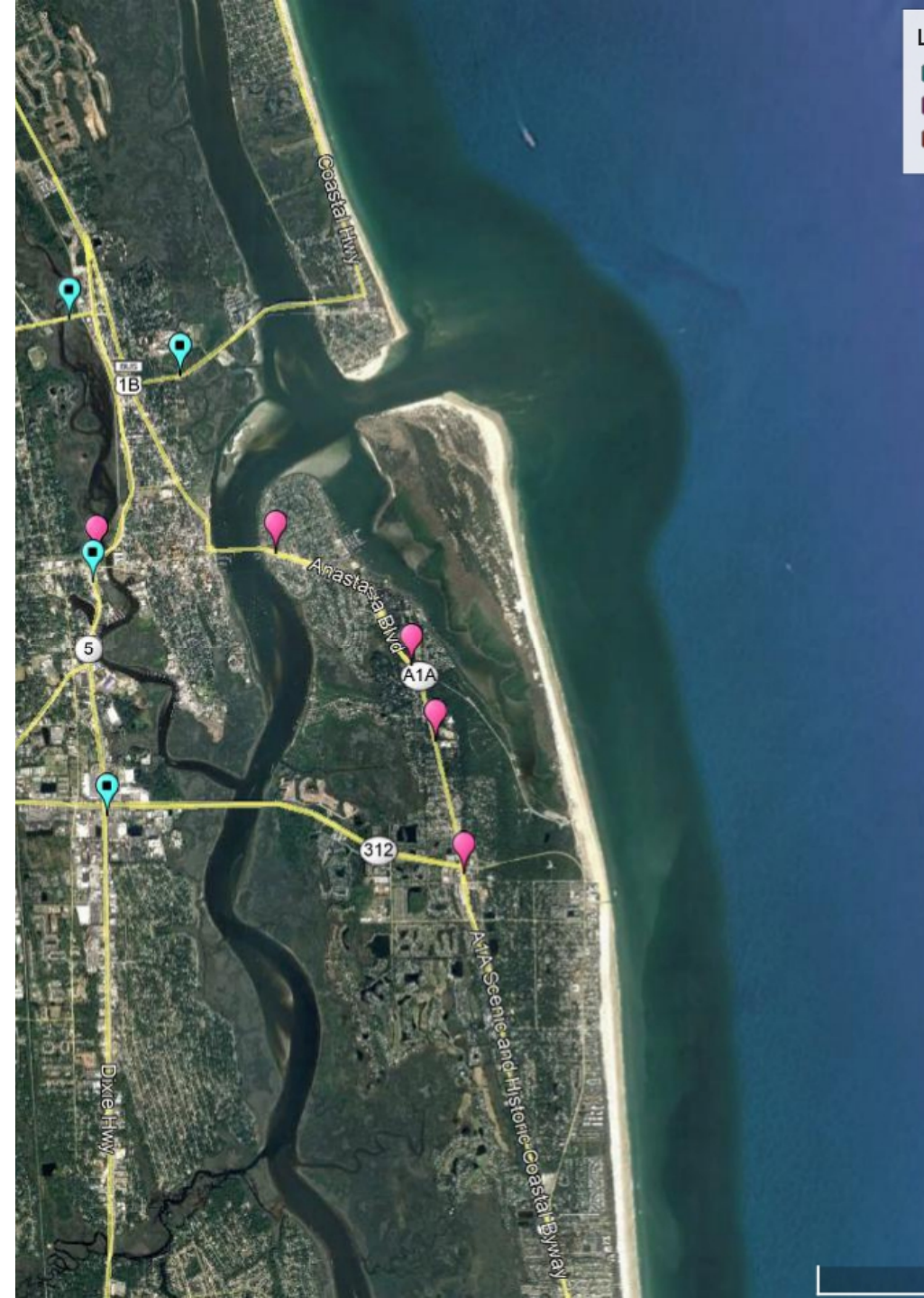
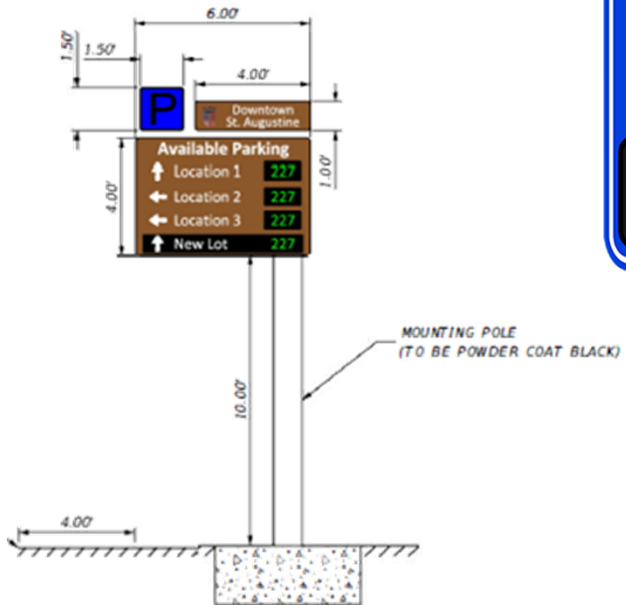
- Signal control upgrades
- Sensors
- ATSPM
- RSU/RSE
- Virtual OBUs





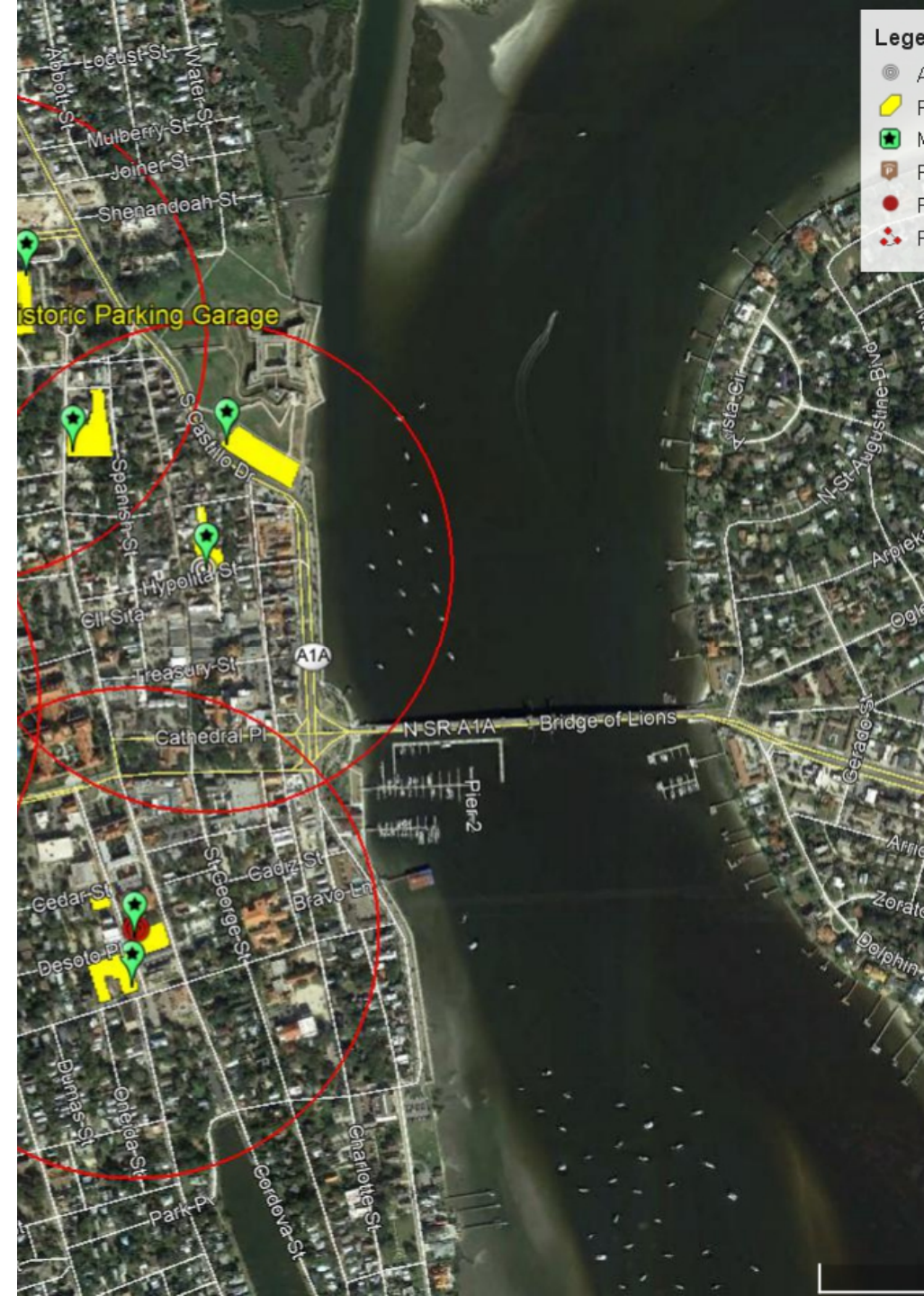
CONNECTED VEHICLES/SIGNALS

Dynamic Message Signs



Mobility Hubs


- EV charging
- Parking kiosks
- Shuttle stops
- Public Wi-Fi





Travel Options

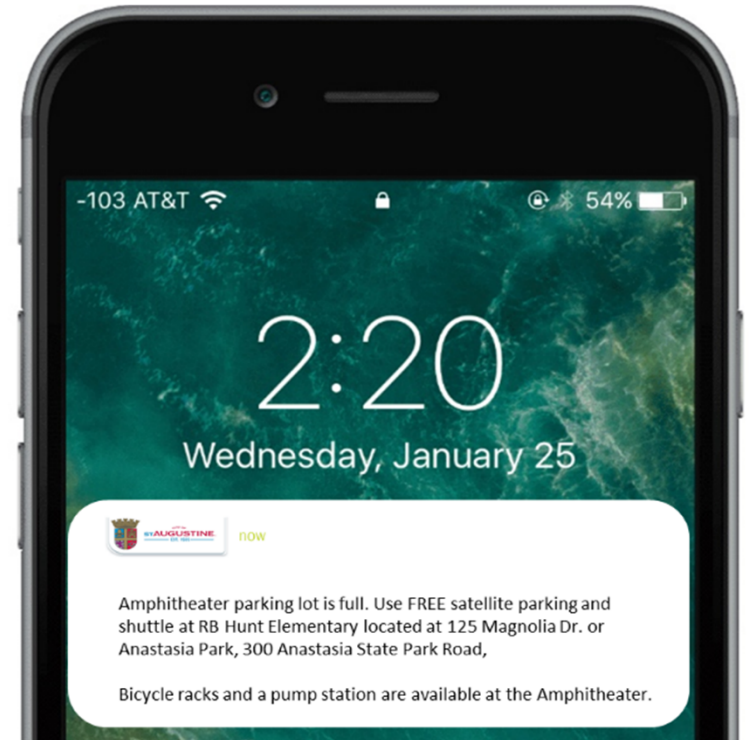




The City of St. Augustine would like to send you push notifications about the latest news on parking, traffic and destinations.

Notifications can be turned off at any time in the application settings.

No Thanks
ALLOW



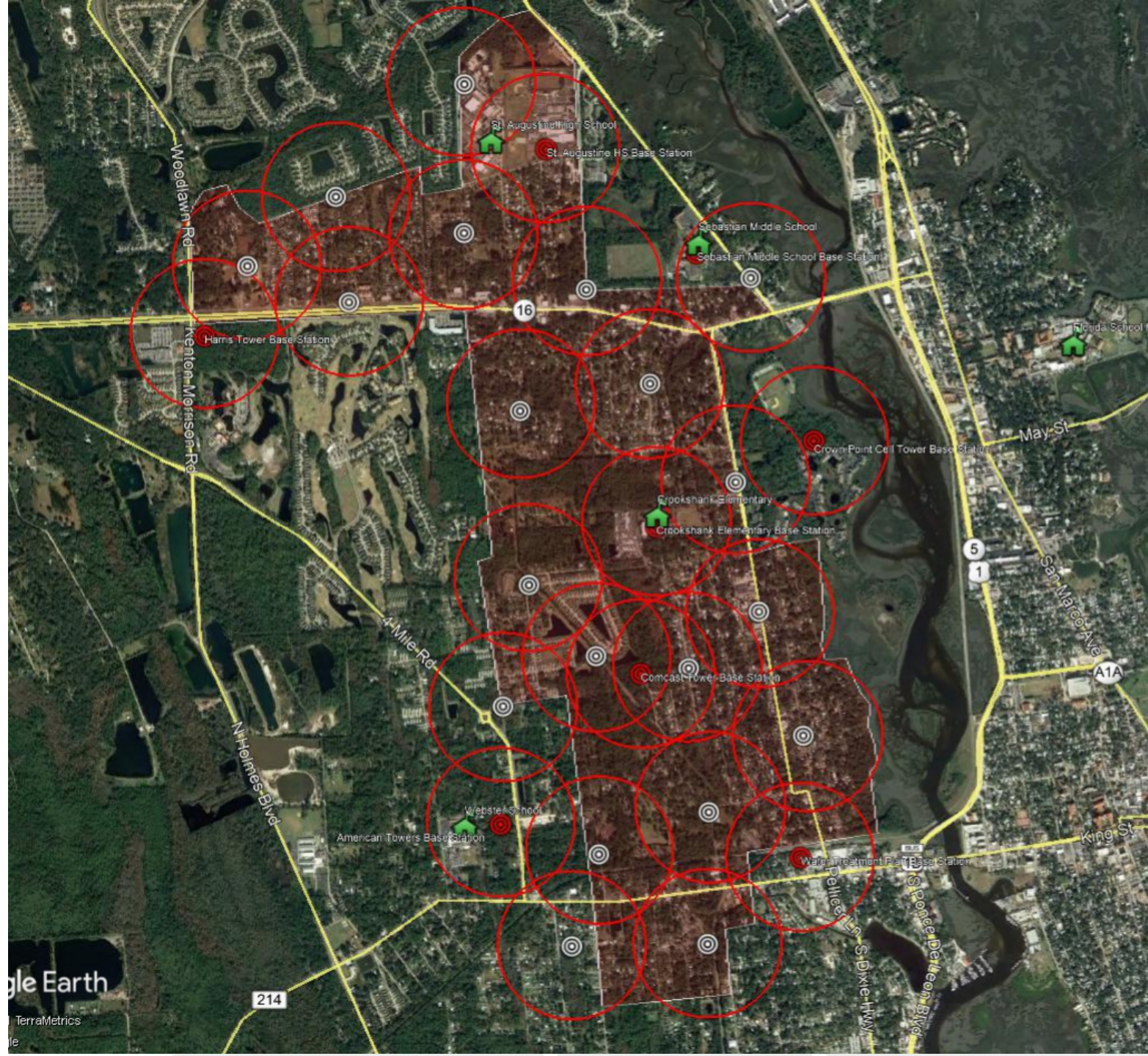


Google Earth

Image © 2021 TerraMetrics
Data SIO, NOAA, U.S. Navy, NGA, GEBCO
© 2021 Google

Public Wi-Fi

- < 70% reliable internet access
- Underperforming schools



Comprehensive Asset Management

Parking and Event Management



Traffic Flow and Incidents



Flood Detection



Virtual EOC



Asset Management



Waste Management



Water and Sewer



Customer Response



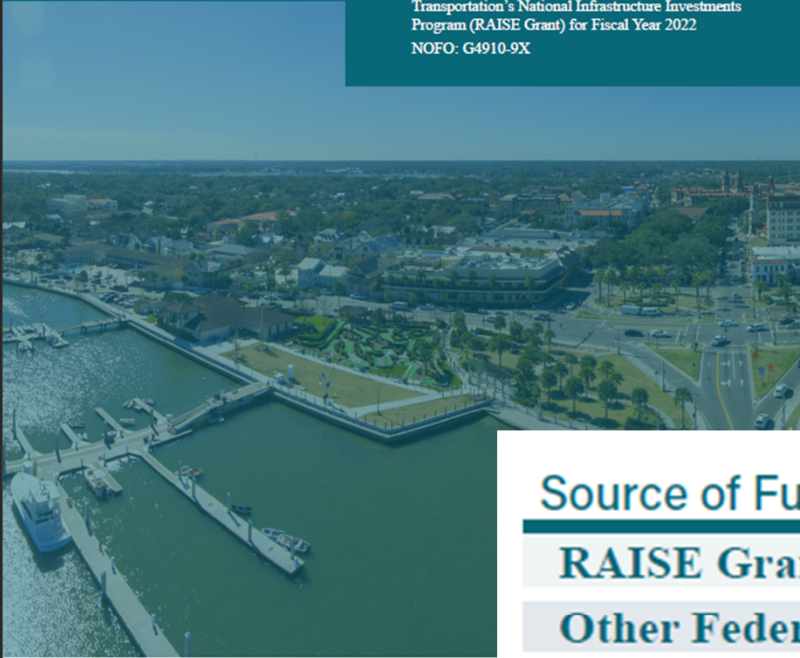
Work Order Status



RAISE Grant (2022 Award)

SMART ST. AUGUSTINE

Funding Opportunity for the Department of Transportation's National Infrastructure Investments Program (RAISE Grant) for Fiscal Year 2022
NOFO: G4910-9X



Phase	Date
Systems Manager Procurement	Q1 24
Final Design	Q2 25
Construction	Q2 26
Systems Implementation	Q2 26
Operations and Maintenance	Q4 31

Source of Funds	Contribution
RAISE Grant	\$12,263,159
Other Federal (Programmed)	\$1,058,552
Other Federal (Previously Expended)	\$160,000
Local match (Previously Expended)	\$535,551
Total	\$17,145,985

Terry Shaw, P.E.
terry.shaw@kimley-horn.com
904-738-5323