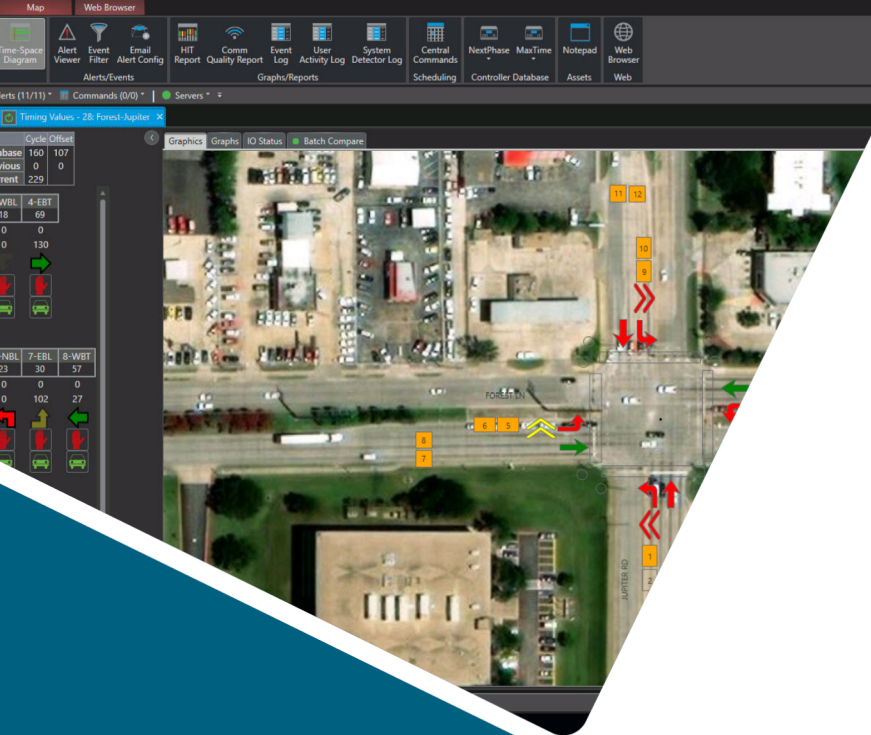


LEARN • COLLABORATE • SHARE • ENERGIZE



Kimley»»Horn

SMART CITIES

TECHNOLOGY FORUM

Traction Priority Overview

»»KITS

A Kimley-Horn Software Solution

»»Kadence

A Kimley-Horn Software Solution

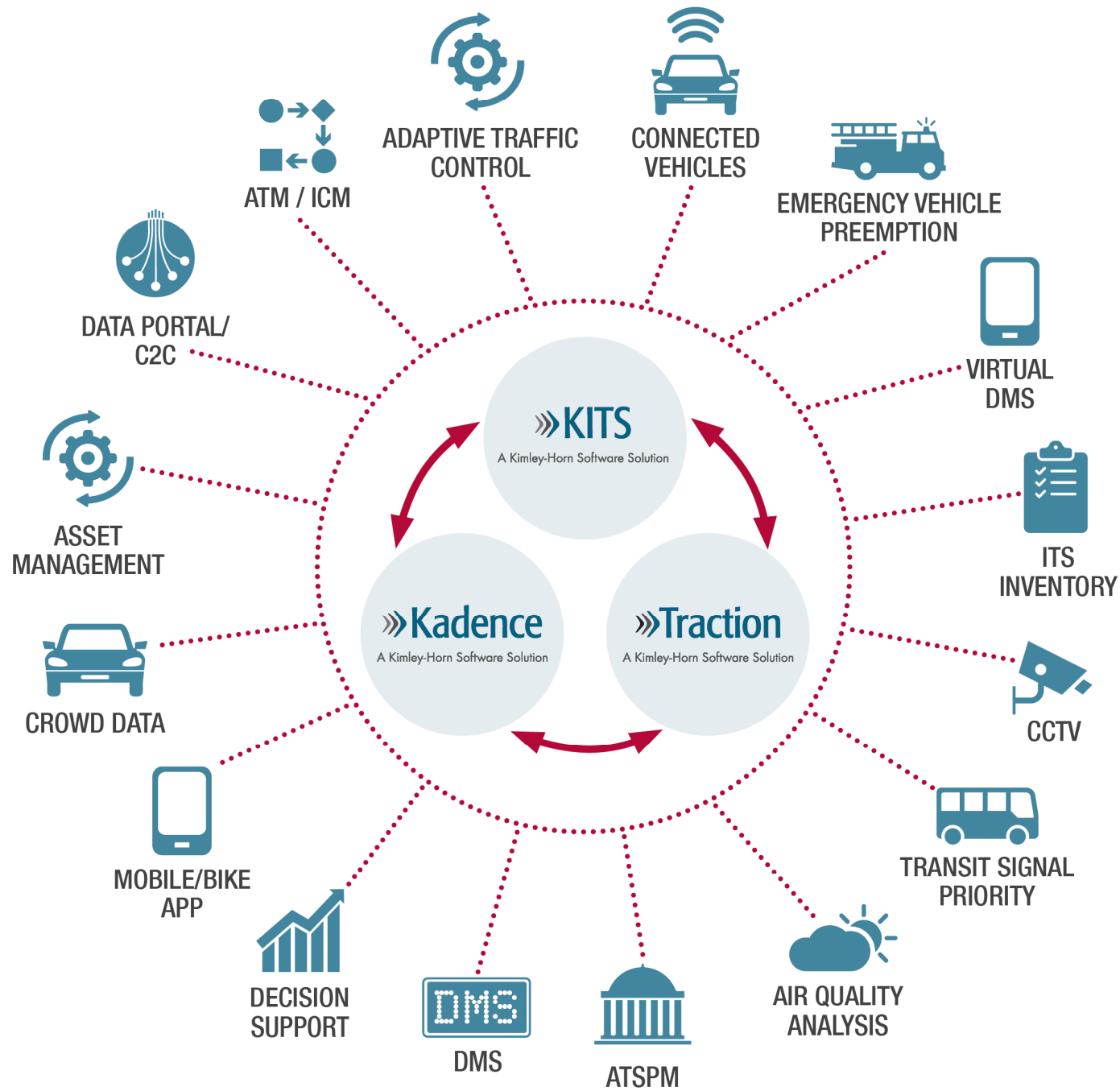
»»Traction

A Kimley-Horn Software Solution

Agenda

- Kimley-Horn Smart Cities Platform
- Traction Priority Overview

Kimley-Horn Smart Cities Platform



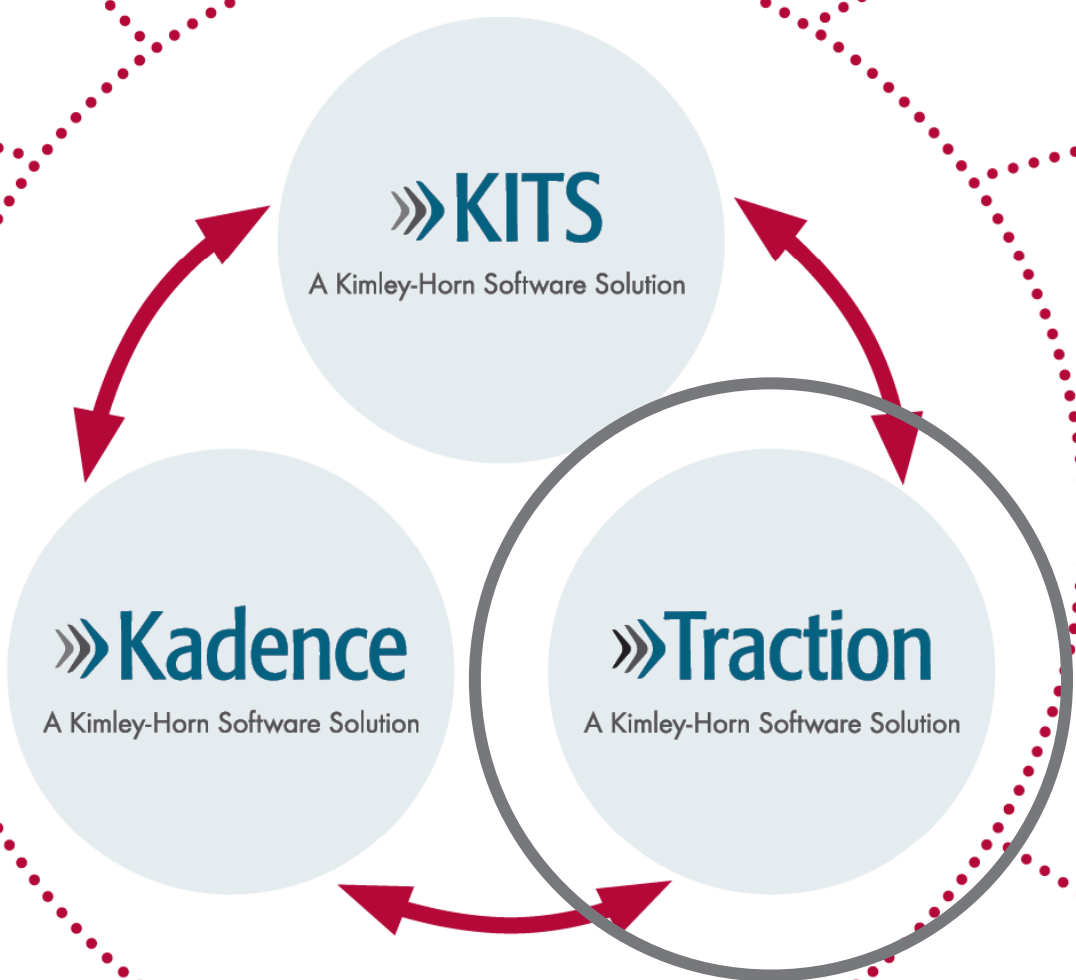
PORTAL/
2C

IT

TA



BILE/BIKE
APP



VIRTUAL
DMS



ITS
INVENTORY



CCTV



TRANSIT SIGNAL
PRIORITY



Traction Smart Cities Ecosystem



»» **TractionLive**

View real-time system status from your web browser or mobile device.

»» **TractionTravel**

Collect, analyze, and automate travel time data and alerts.

»» **TractionPriority**

Provide centralized priority for all modes of transportation.

»» **TractionMetrics**

Visualize performance data with streamlined dashboards and reports.

»» **TractionConnect**

Share and receive connected vehicle data and traveler information messages.

»» **TractionWorkflow**

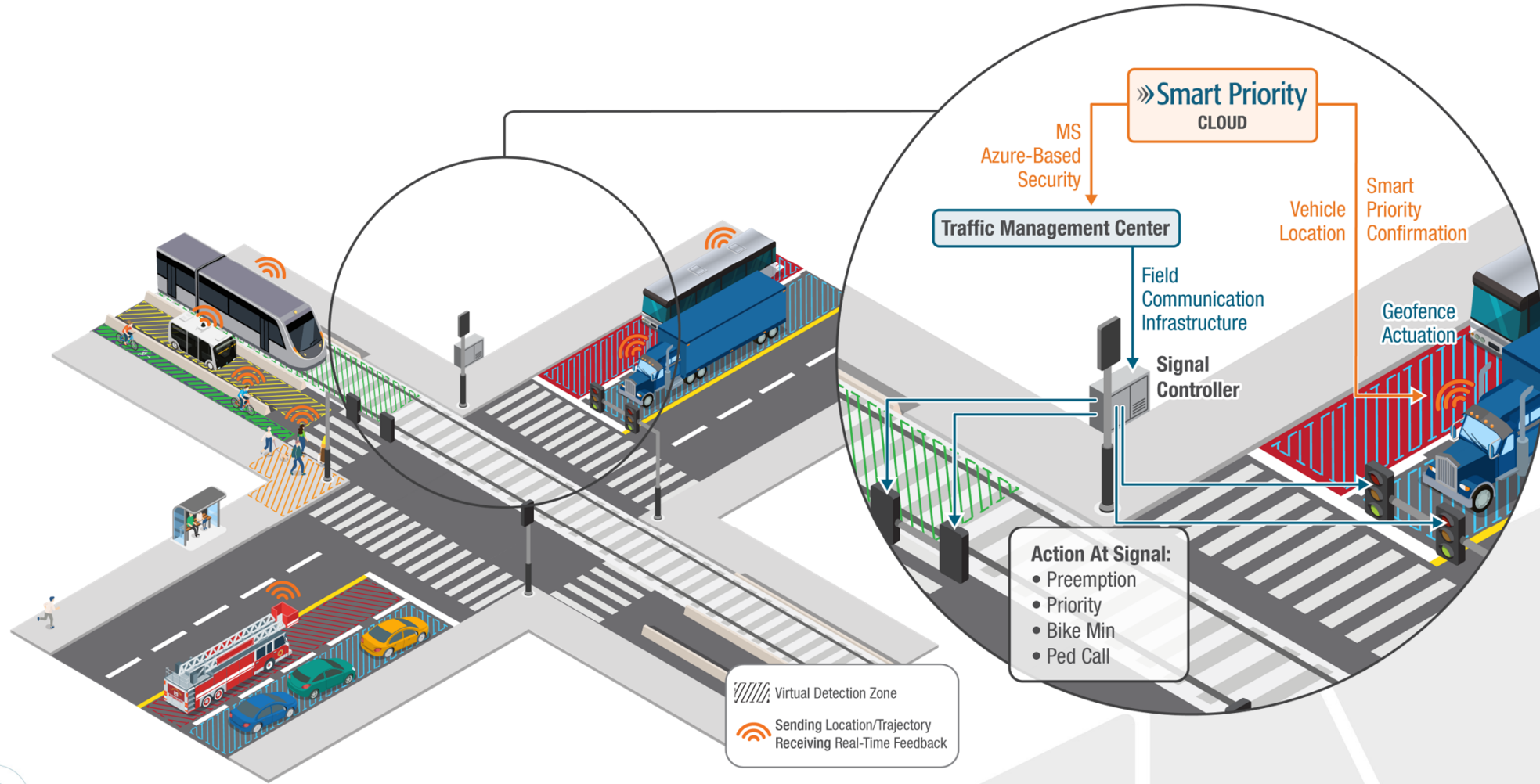
Manage assets, inventory, and work order tasks.

Traction Smart Cities Ecosystem

- Every module can be deployed standalone
- Every module integrates with KITS
 - KITS map – New layers
 - KITS work item tickets
 - KITS decision support and DMS – Traction travel times
 - KITS signal data in Traction mobile app
 - KITS HIT Report + Kadence integrating Traction Metrics data
- Modules complement each other to provide expanded capabilities
 - Traction Connect - AVL source for Traction Priority
 - Traction Metrics – travel times from Traction Travel
 - Traction Priority – enhanced performance measures from Traction Travel

Traction Priority

What is Traction Priority

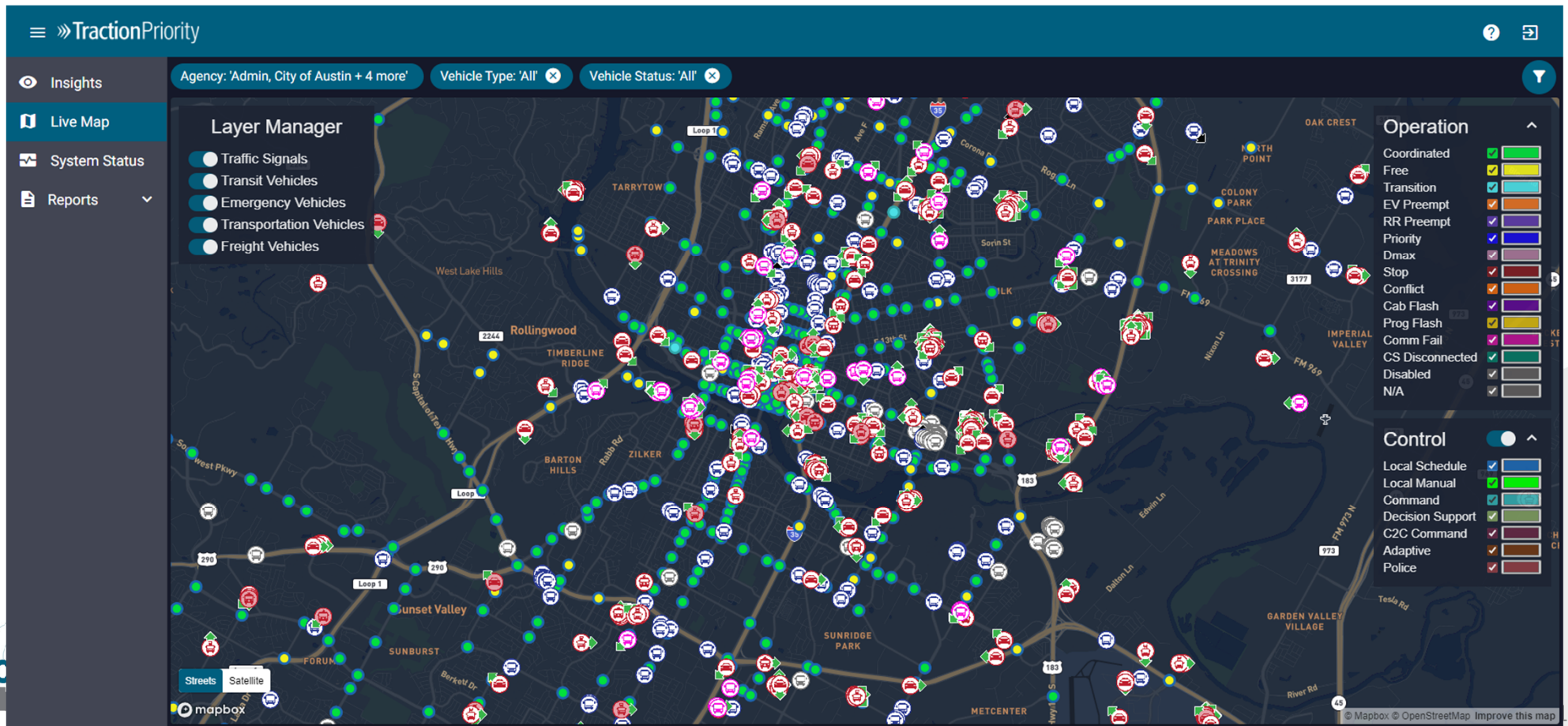


Why Traction Priority

- Improve safety and efficiency of travel
- Measure performance and fine-tune
- Multi-modal support
 - Transit
 - Emergency vehicles
 - Freight
 - School buses
 - Bicyclists
 - Snowplows
- Cost-effective with less maintenance relative to infrastructure-based operation
- Scalable across large geographic areas

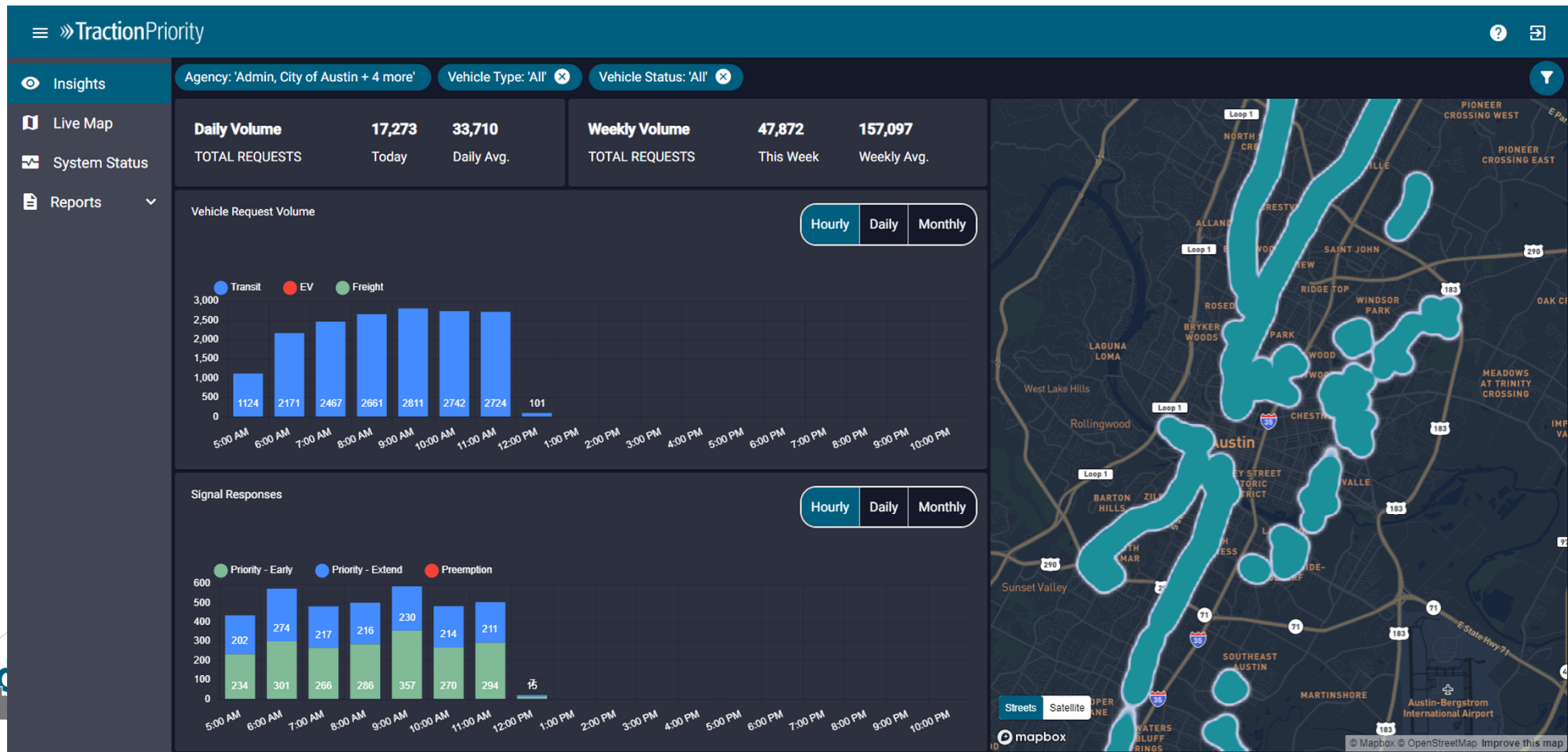
Traction Priority Key Features

- Real-time tracking of vehicles and traffic signals



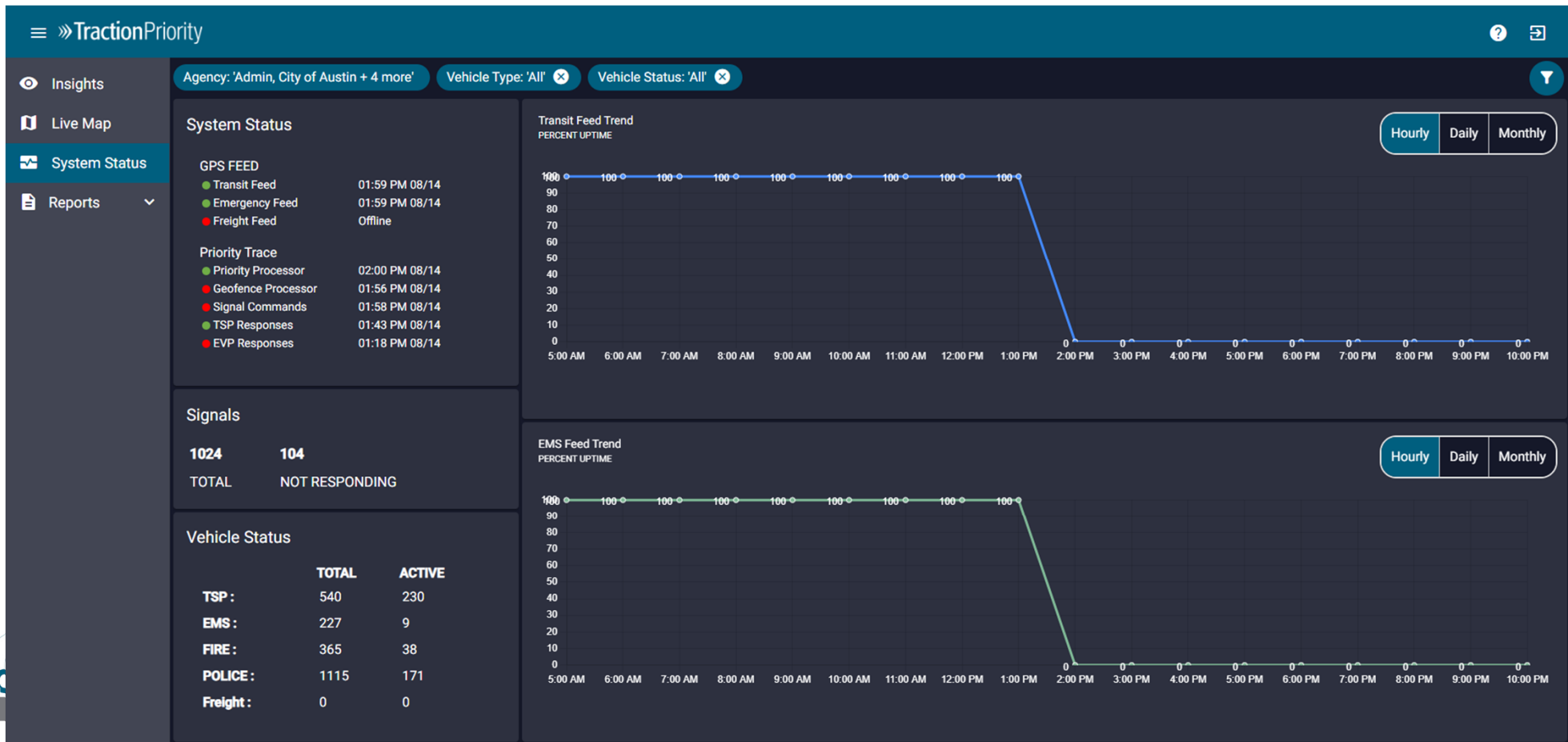
Traction Priority Key Features

- Insights into general system performance



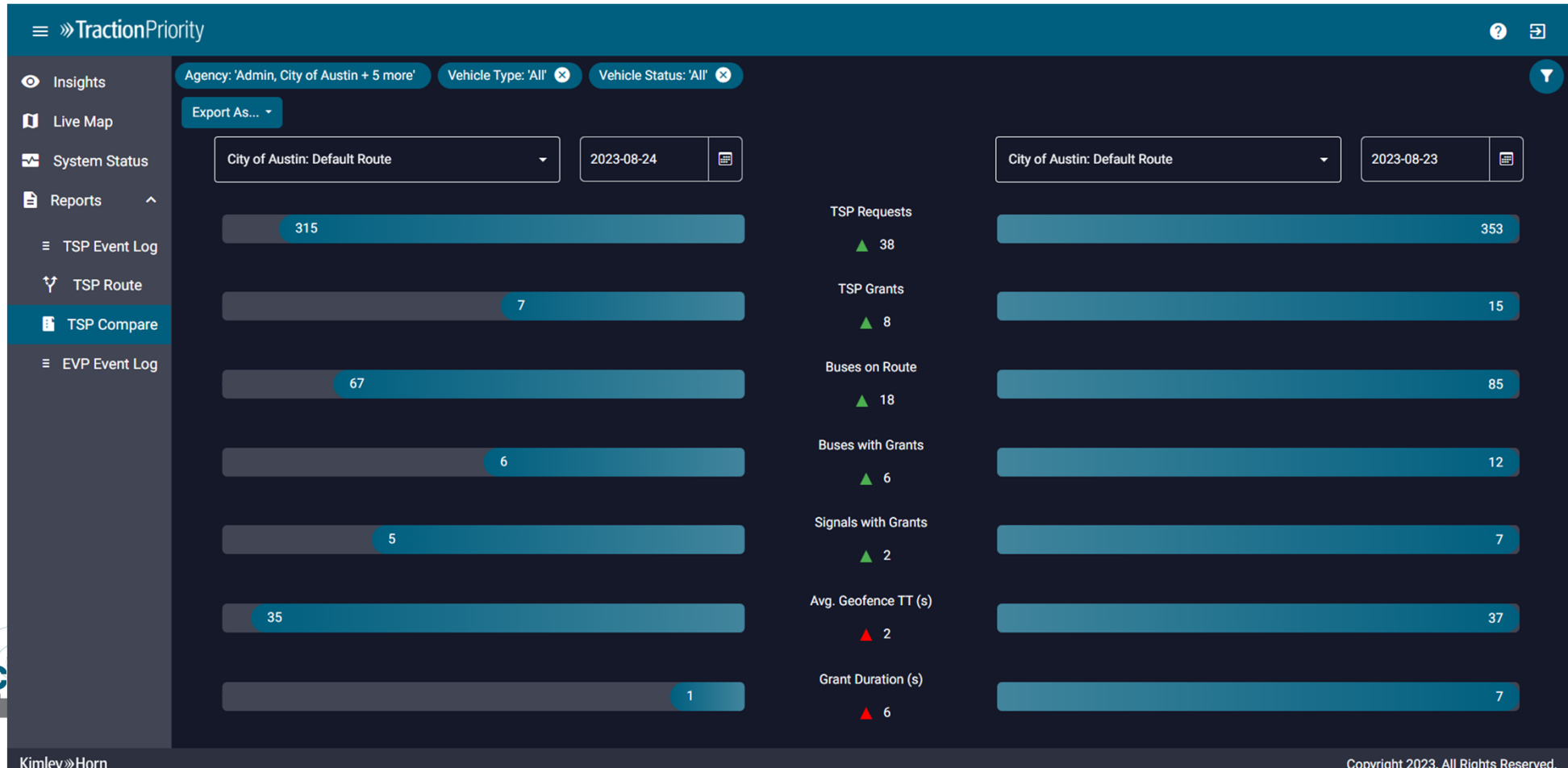
Traction Priority Key Features

- Live system component diagnostics



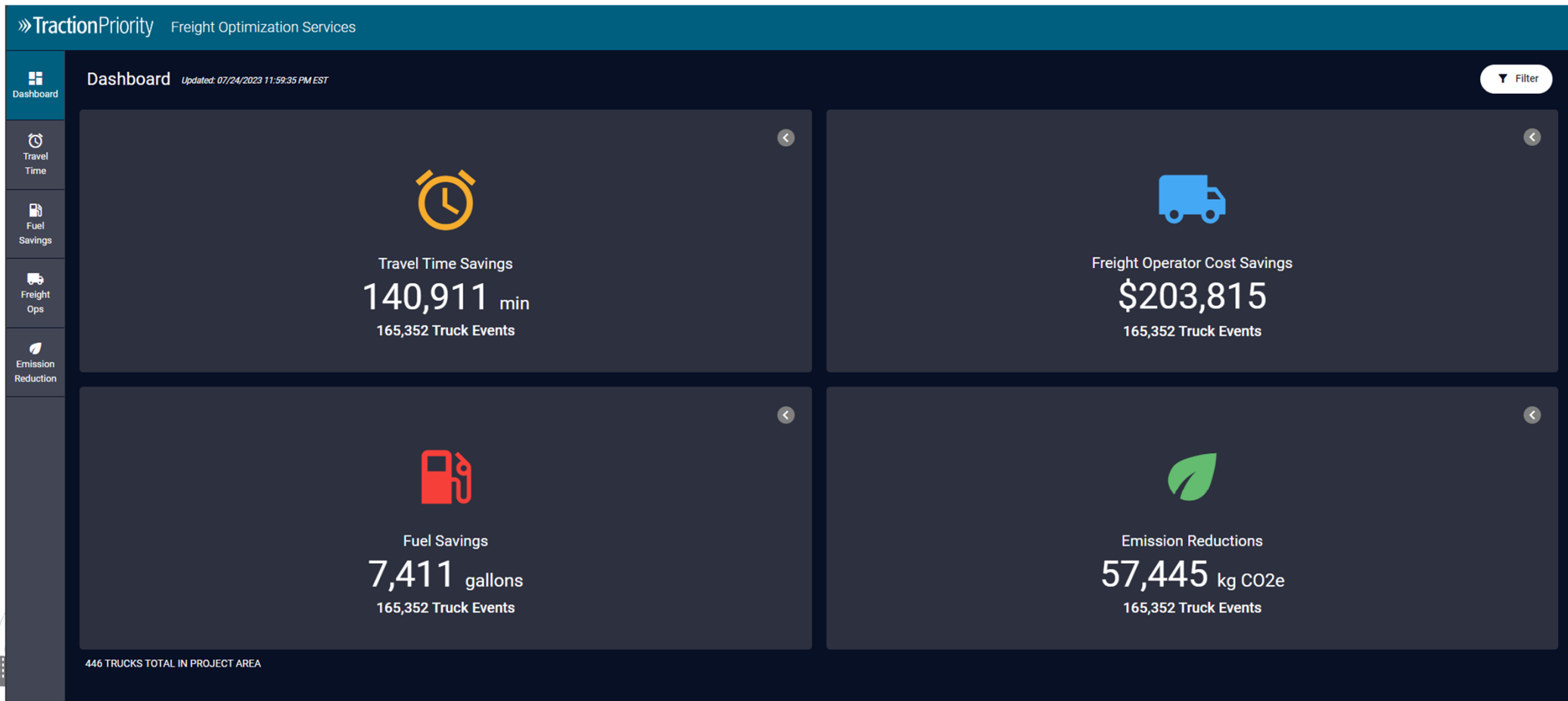
Traction Priority Key Features

- Reports showing all historical activity



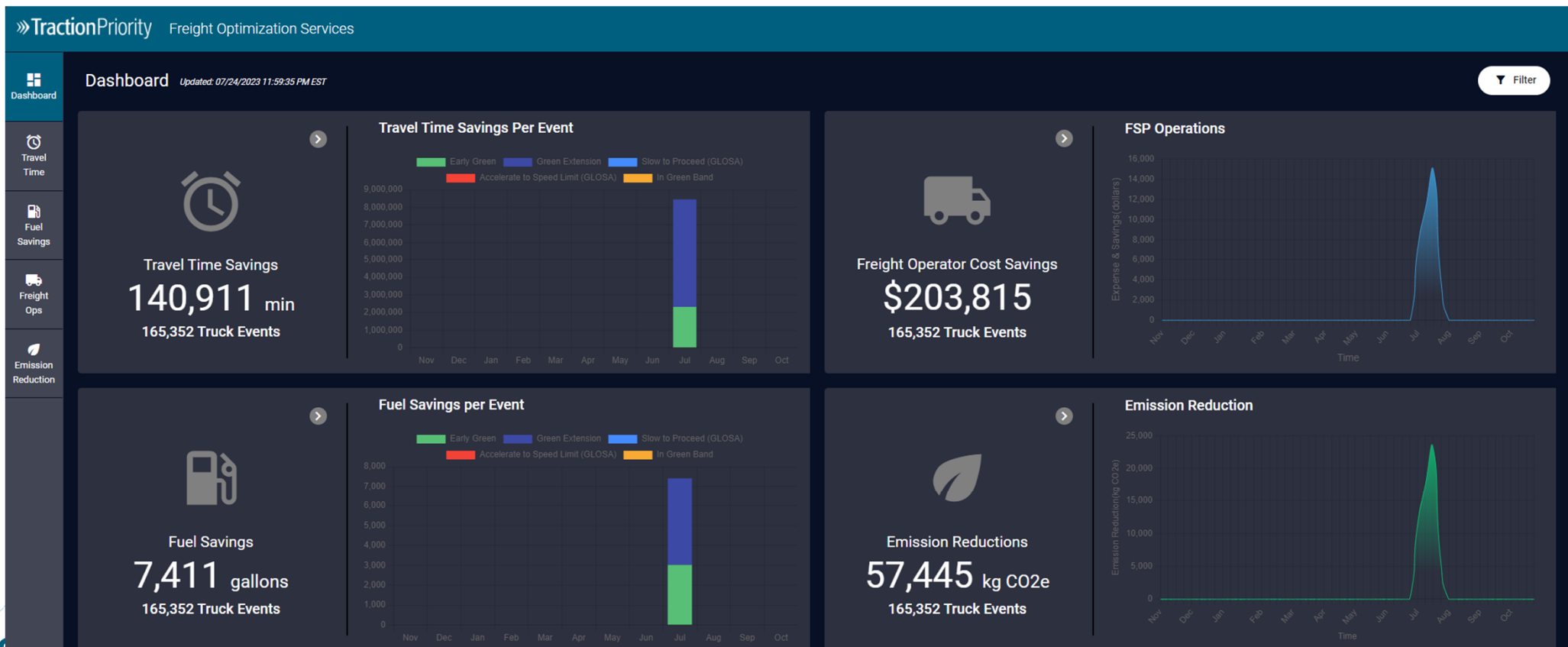
Traction Priority Key Features

- KPI dashboard – summary views



Traction Priority Key Features

- KPI dashboard – travel time and fuel savings trends

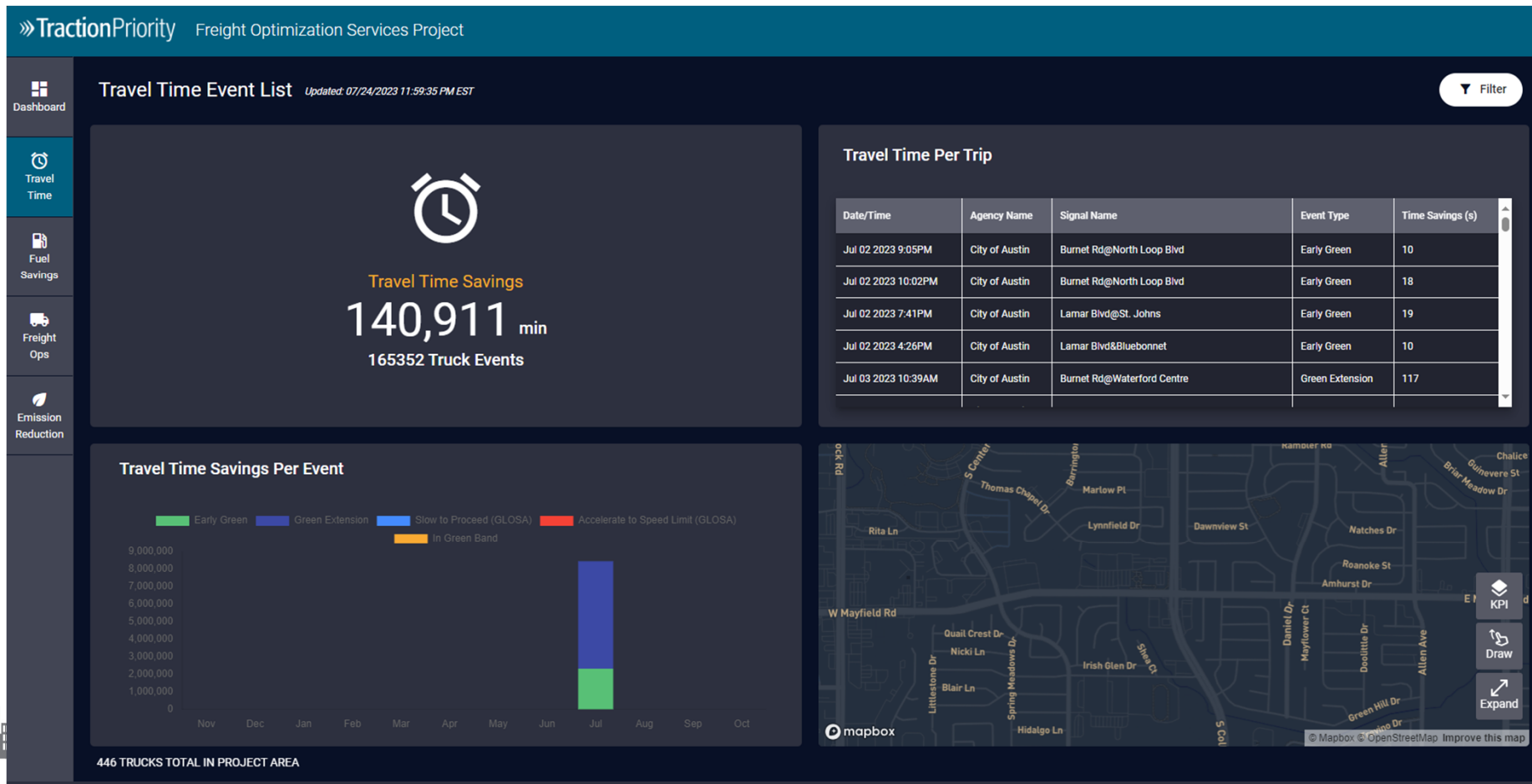


446 TRUCKS TOTAL IN PROJECT AREA



Traction Priority Key Features

- KPI dashboard – in-depth travel time analysis



Current Traction Priority Projects

- Austin, TX – TSP and EVP
- NCTCOG, TX – Freight Priority
- LA Metro, CA - TSP
- Windsor, CA – TSP and EVP
- Surprise, AZ – EVP
- IndyGO, IN – TSP (potentially EVP in the future)
- SANDAG, CA – TSP
- Santa Clara, CA - TSP

Traction Priority Roadmap

- Complex business logic
- Enhancements to mobile app to improve AVL capabilities
- KPI dashboard
- Increased scalability
- Enhanced integration
 - Traction travel times
 - Congestion manager / Decision support
 - Kadence
- Future automation, AI and machine learning

Thank You!

