

LEARN. COLLABORATE. SHARE. ENERGIZE.

Kimley»Horn

SMART CITIES

TECHNOLOGY FORUM

**GoldenKey® Blind Pedestrian
Wayfinding System
October 2023**

»» KITS

A Kimley-Horn Software Solution

»» Traction

A Kimley-Horn Software Solution

»» Kadence

A Kimley-Horn Software Solution

»» Smart Priority

A Kimley-Horn Software Solution



Download your GoldenKey[®] today
to unlock your complete trip





ALL ACCESS

All Access Transit Solutions

DWBE Disadvantaged Traveler Technology

Developer



ALL ACCESS

Kimley»»Horn

other



other

ALL ACCESS

claudia

anthony

doug



**ITS + Smart Cities + Transit + Aviation
Engineering Services**

Smart Cities Software Developer

Kimley»»Horn

darya

Seth?

doug

melissa

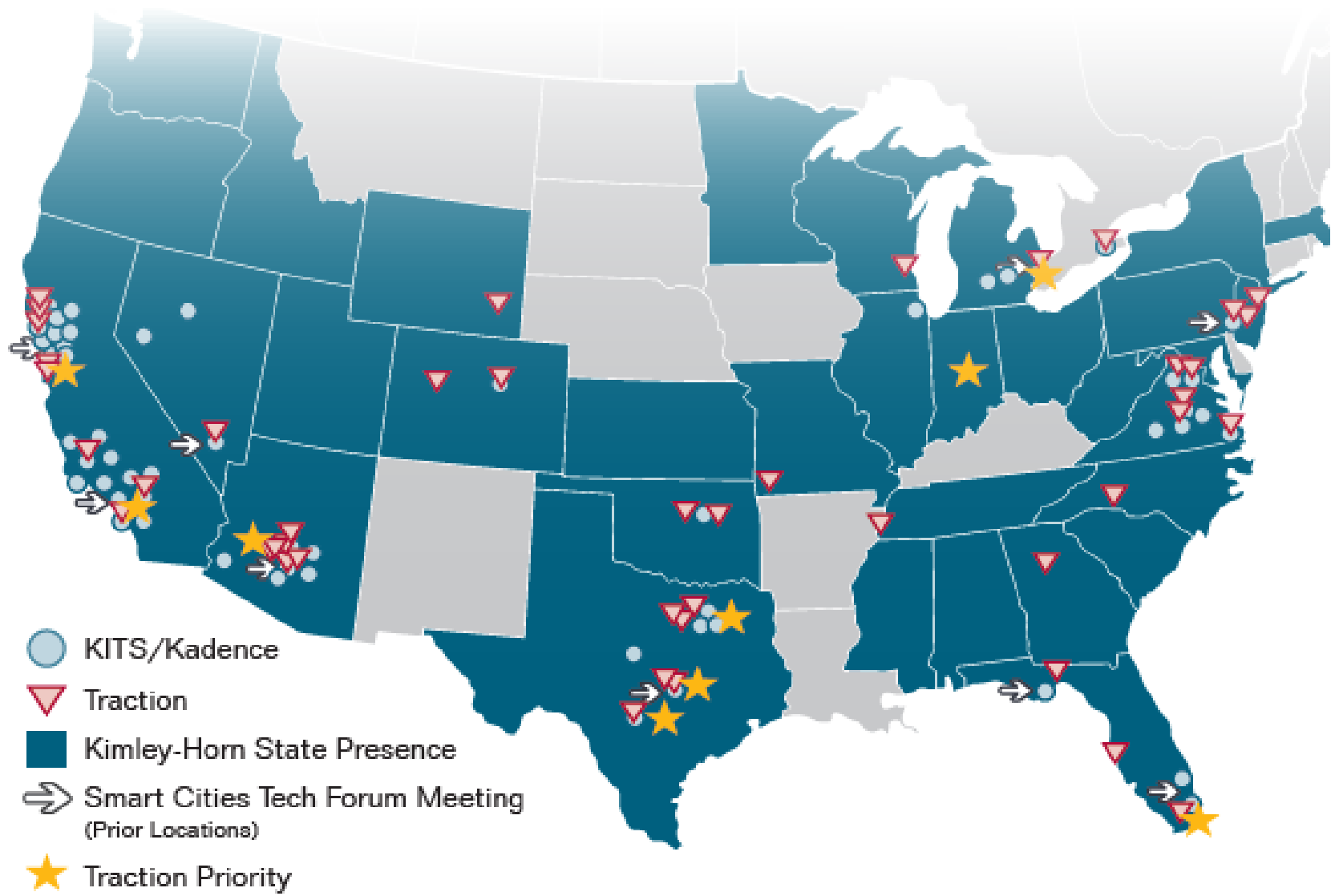
National Presence

Hundreds of public agency software users

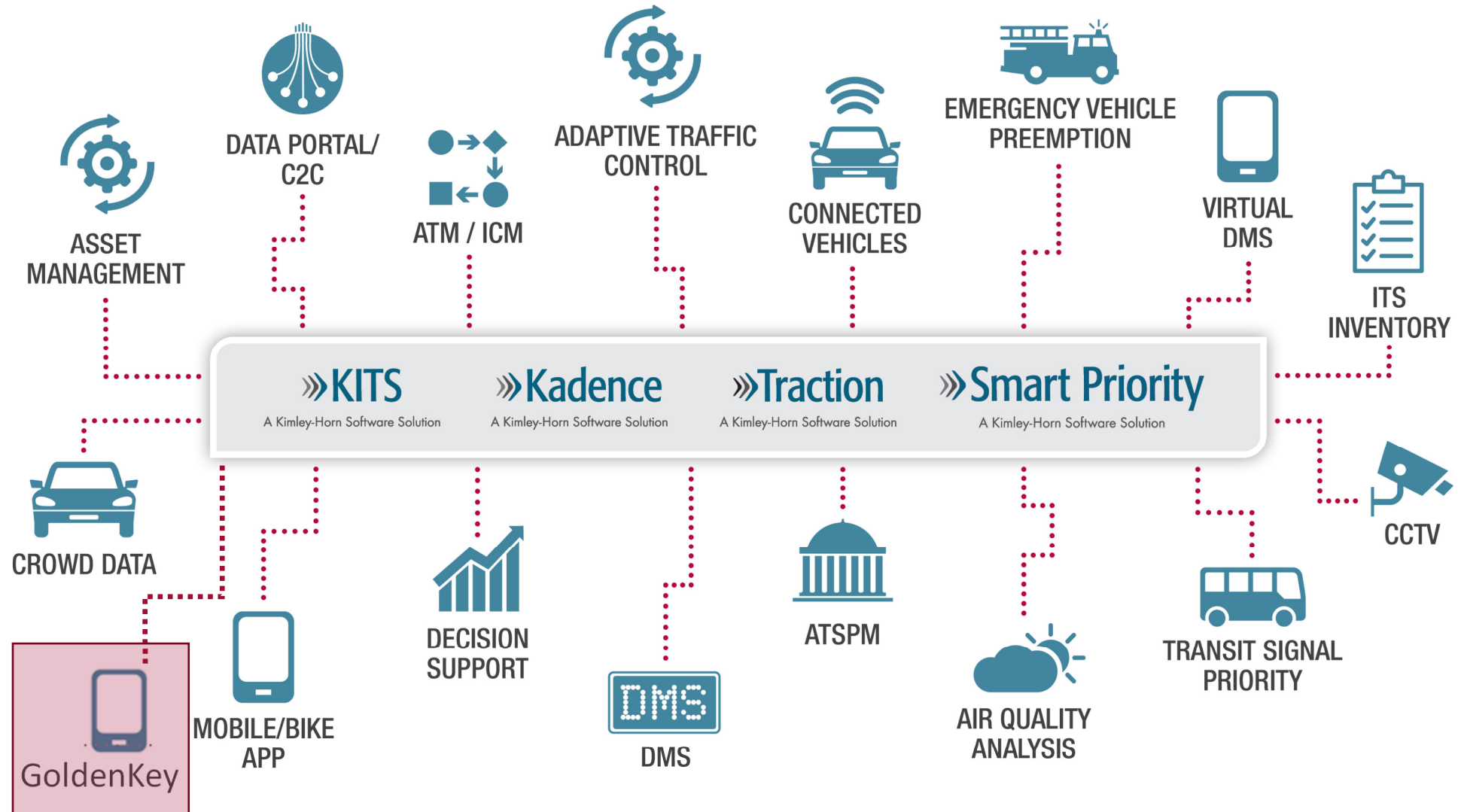
Hundreds of ADA compliance and planning projects

Tens of thousands of public agency clients (airports, transit, public works, etc.)

Hundreds of Nationwide private clients (food service, retail, consumer services, housing)



Kimley-Horn Smart Cities / IoT Platform





Motivation

3M+ functional blind
6M+ visually-impaired persons in the US

60M+ other eligible users in the US

Significant issue in quality of life for the disadvantaged:

Indoor/outdoor wayfinding in unfamiliar complex spaces

Technologies that assist the blind can assist everyone “Universal Design”

1 IN 4

Adults in the US have some type of disability

4.46M

Veterans have a service connected disability in the US

5.4%

of children aged 5 to 17 have a disability

10%

of people aged 18 to 64 have a disability

38%

of people aged 65 or older have a disability



This is so important because it protects people with disabilities from discrimination in all aspects of employment, in access to public services, and access to goods and services.

[HTTPS://ADATA.ORG/LEARN-ABOUT-ADA](https://adata.org/learn-about-ada)



EXAMPLE



FLAT FIX

STOP

STOP

Auto & Service LLC





The Americans with Disabilities Act (ADA) protects people with disabilities from discrimination.

Disability rights are civil rights. From voting to parking, the ADA is a law that protects people with disabilities in many areas of public life.



What's on ADA.gov



If you broke your leg, and the ER nurse hands you two aspirin and a bandage, they've given you "medicine"

Would you be happy?

ADA compliance is not a "waivers and variances" issue



§36.403 Alterations: Path of travel

(a) General.

(1) An alteration that affects or could affect the usability of or access to a building or facility that contains a primary function shall be made so as to ensure that, to the maximum extent feasible, the path of travel to the altered area and the restrooms, telephones, and drinking fountains serving the altered area, are readily accessible to and usable by individuals with disabilities, including individuals who use wheelchairs, unless the cost and scope of such alterations is disproportionate to the cost of the overall alteration.

The language is obviously old,, since it mentions access to telephones. Now that I read this again, it isn't probably the right part o emphasize.

What does READILY ACCESSIBLE mean to you?

We posit that GoldenKey[®] technologies, now that they exist, could become considered a requirement under Section 36.403 of the ADA legislation

60
MINUTES



60
MINUTES





Indoor wayfinding apps are not new, but most existing apps require dense physical infrastructure in the space.

Expensive.

Time consuming.

Significant maintenance costs.

Remote human assistance (“be my eyes”) is intrusive and expensive (for users and for IOOs).

GOLDENKEY IS DESIGNED BY AND FOR PEOPLE WITH DISABILITIES

New Smartphone technology unlocks GoldenKey



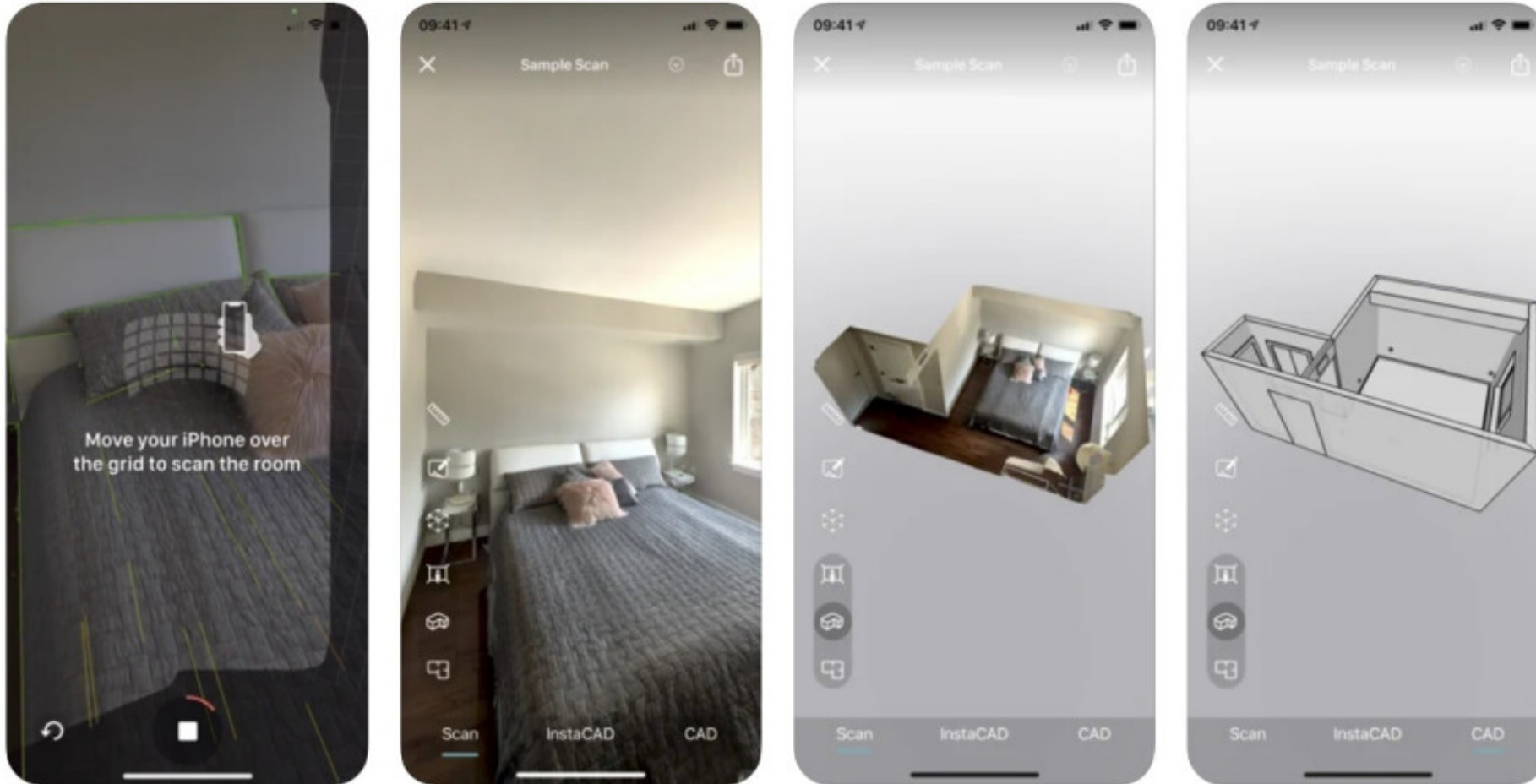
Source: Adobe Stock

Smartphone LiDAR



Sub-centimeter
distance
accuracy

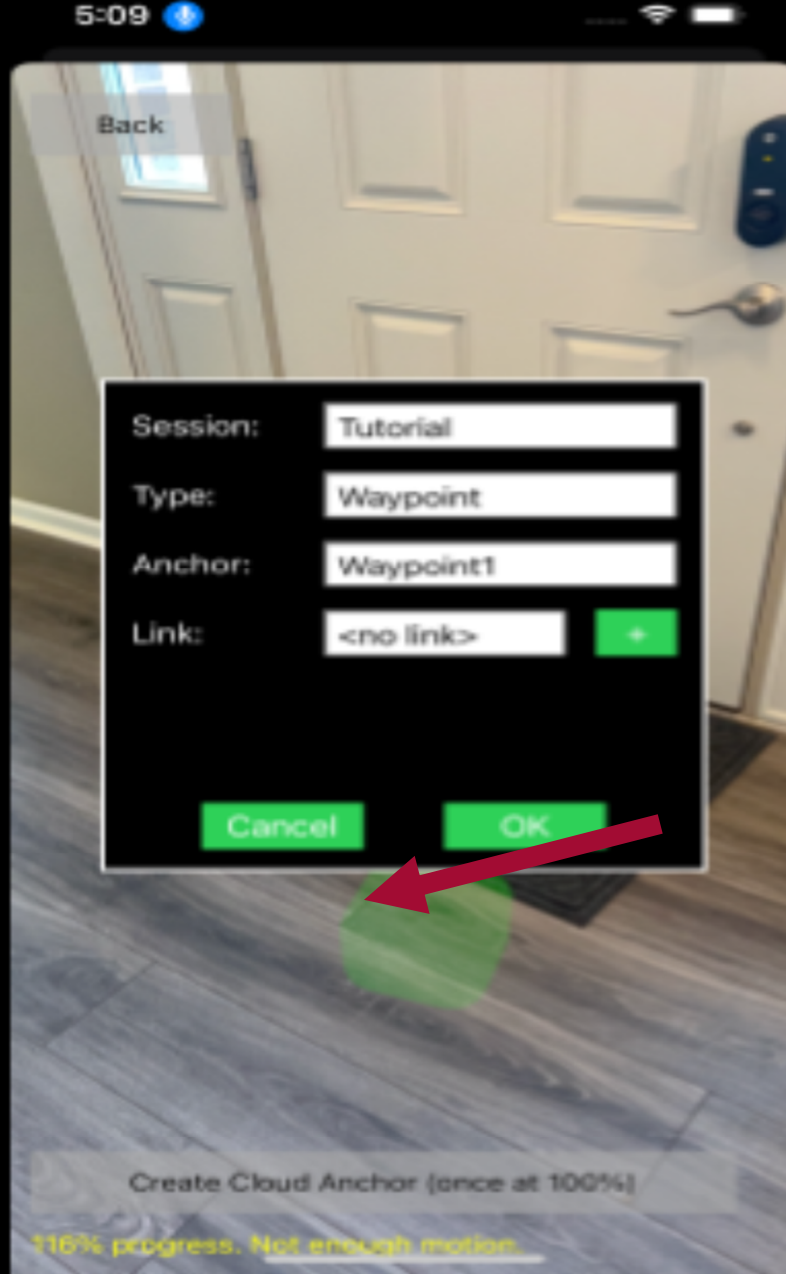
Smartphone LiDAR



Sub-centimeter
distance accuracy

Note: GoldenKey[®]
does not require
CAD models

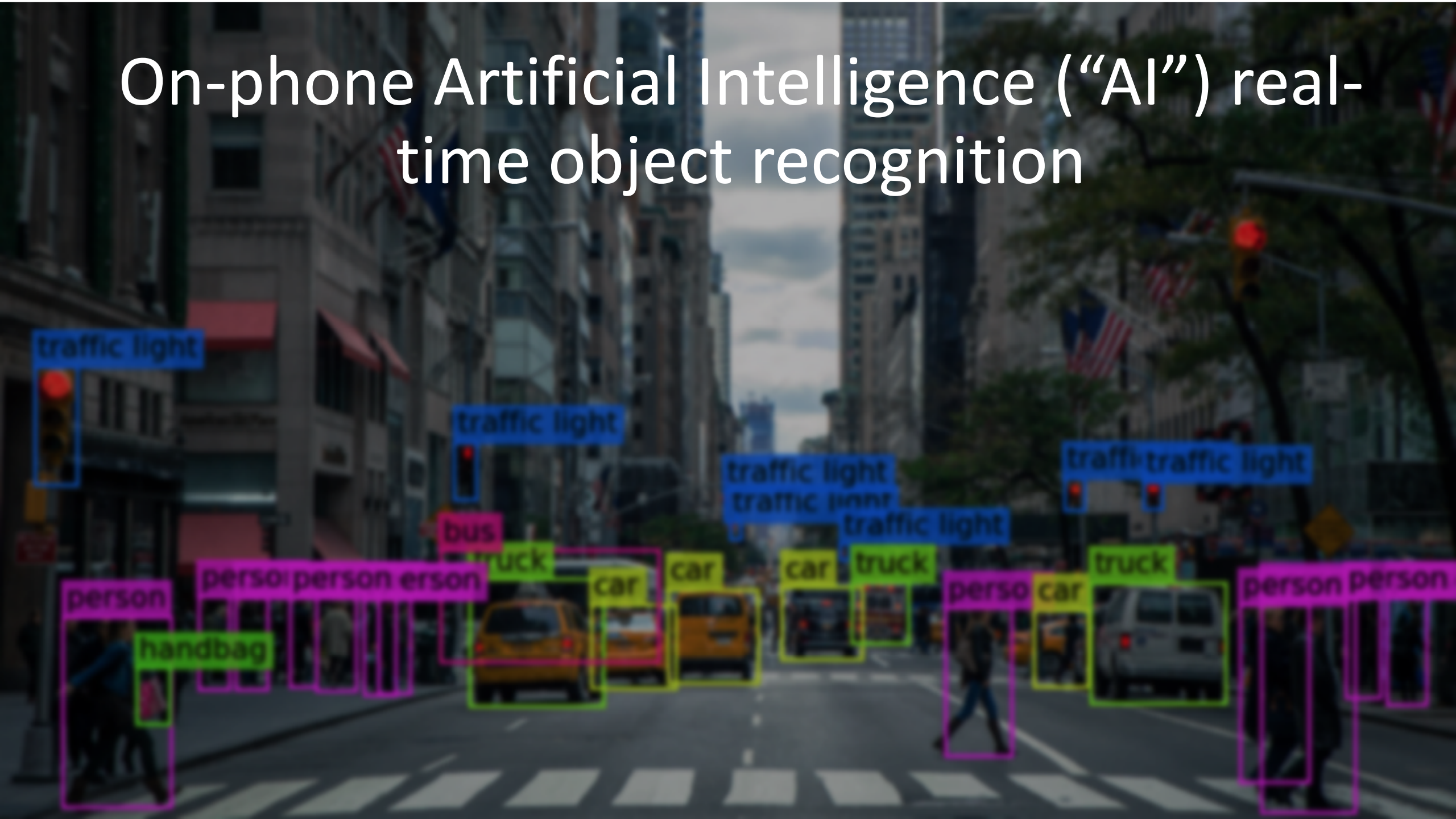
Source: instaCAD



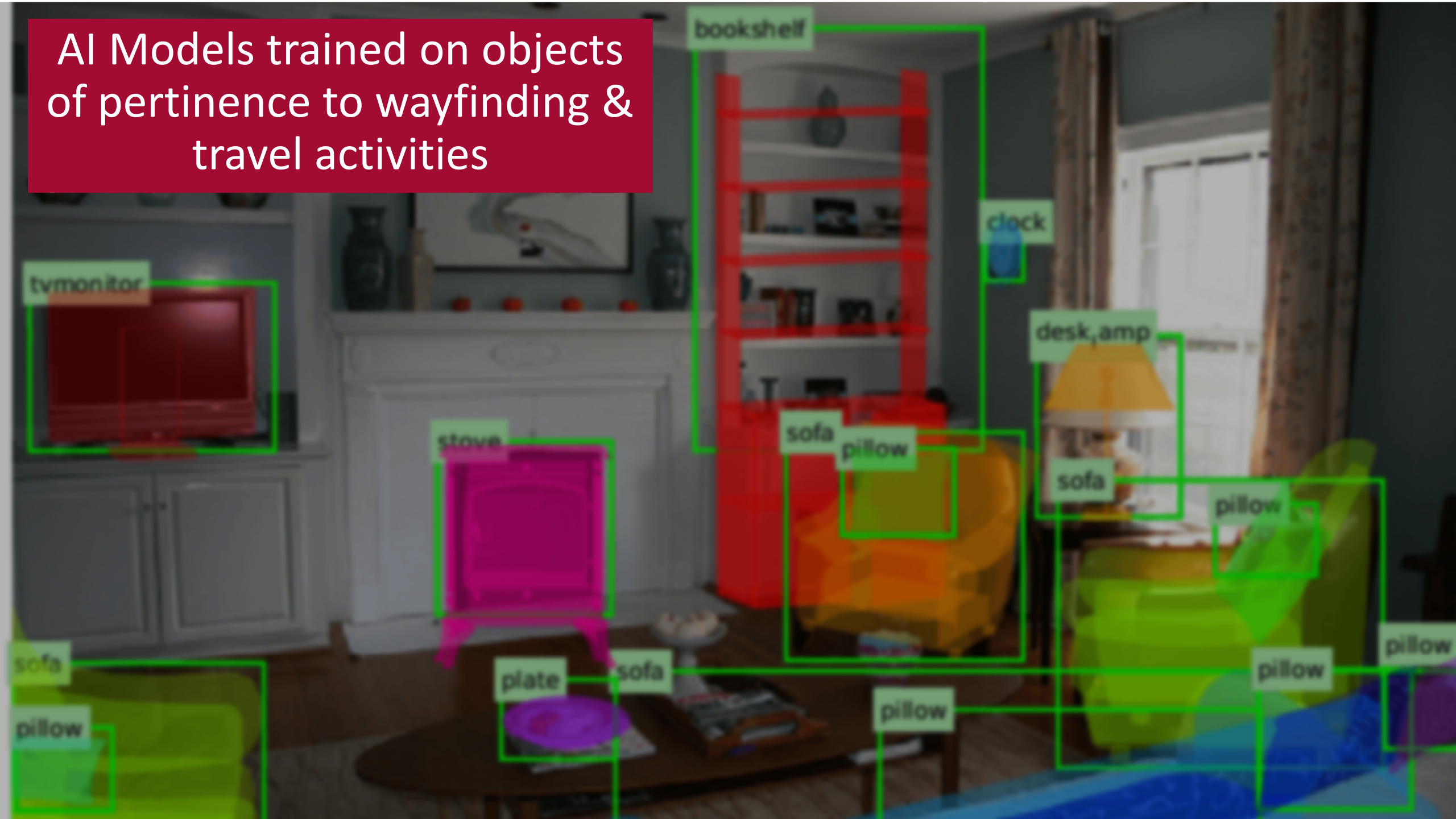
Source: AATS

Augmented reality - Virtual waypoint "anchors"

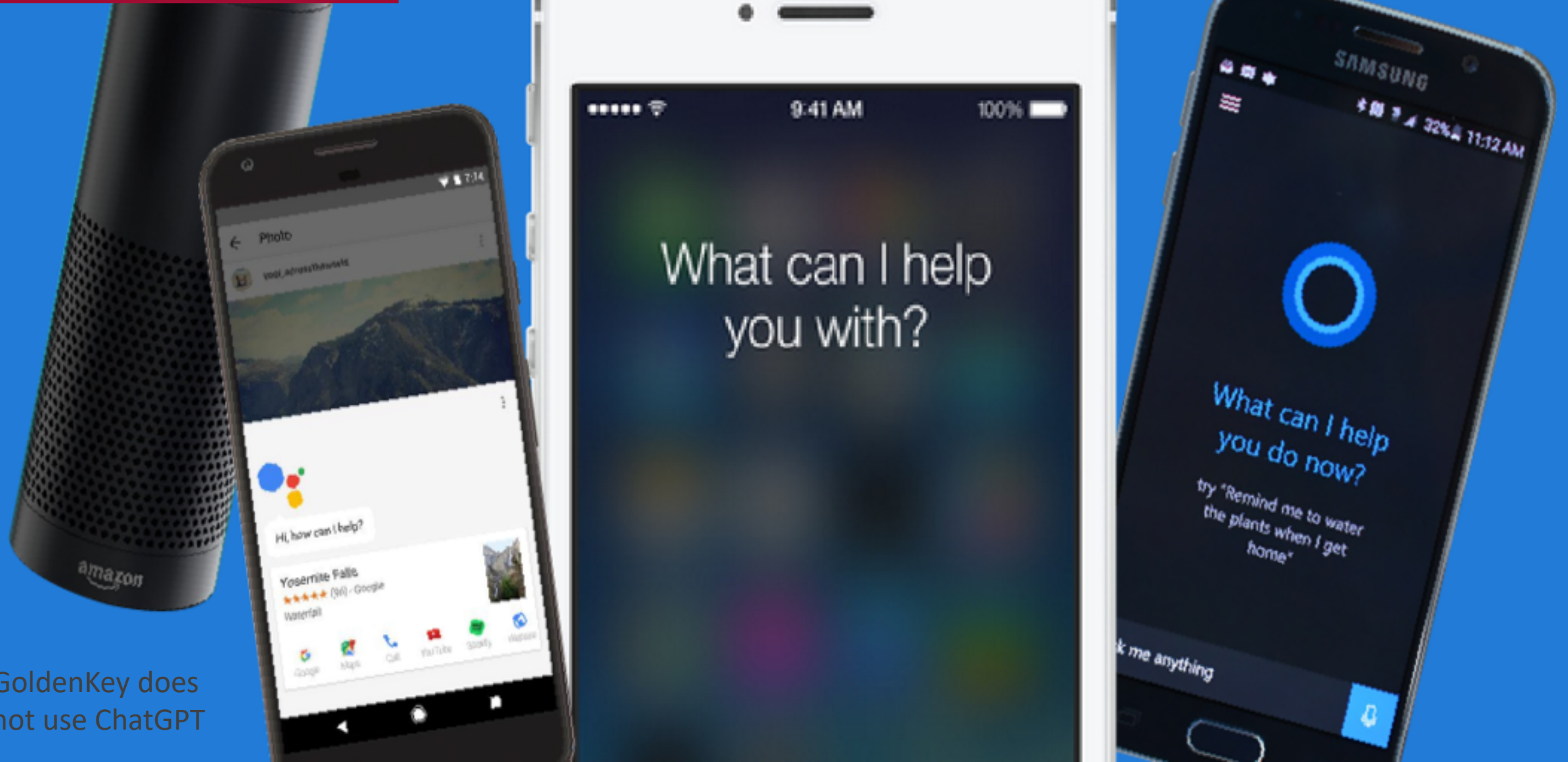
On-phone Artificial Intelligence (“AI”) real-time object recognition



AI Models trained on objects of pertinence to wayfinding & travel activities



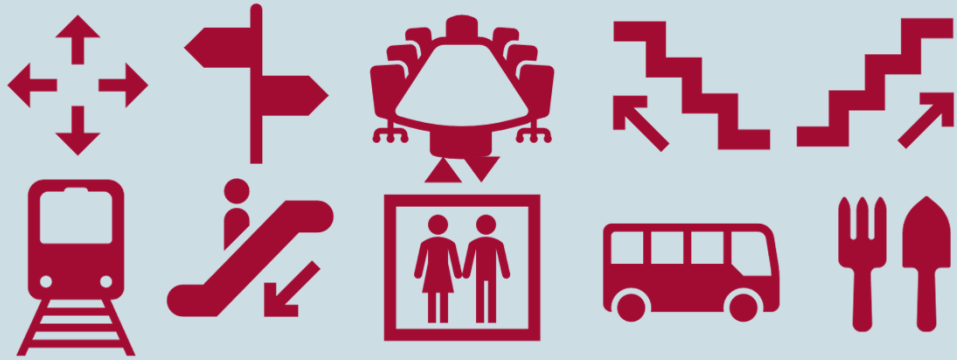
Natural Language Processing (NLP) Chatbots



GoldenKey does
not use ChatGPT

Smart Pathfinding (Context-sensitive AI)

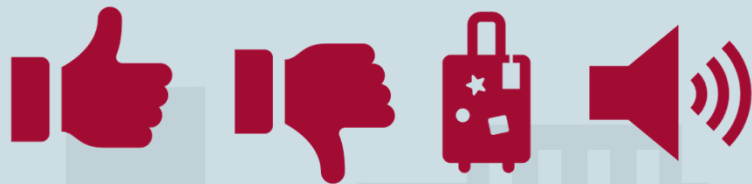
Preferences



POI Announcements



Relevancy



Real-time Environment

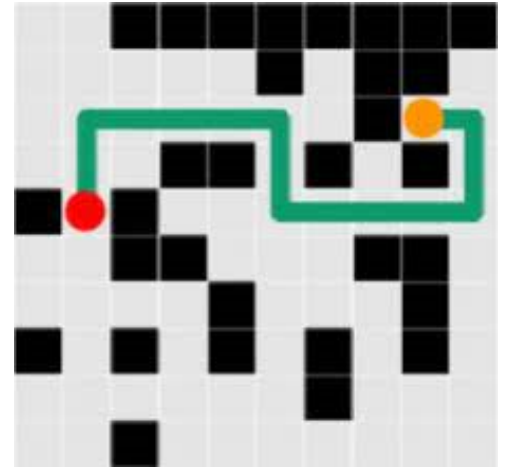




AATS GoldenKey® - Exclusive worldwide patent pending



Chatbot



Smart Pathfinding



Augmented Reality

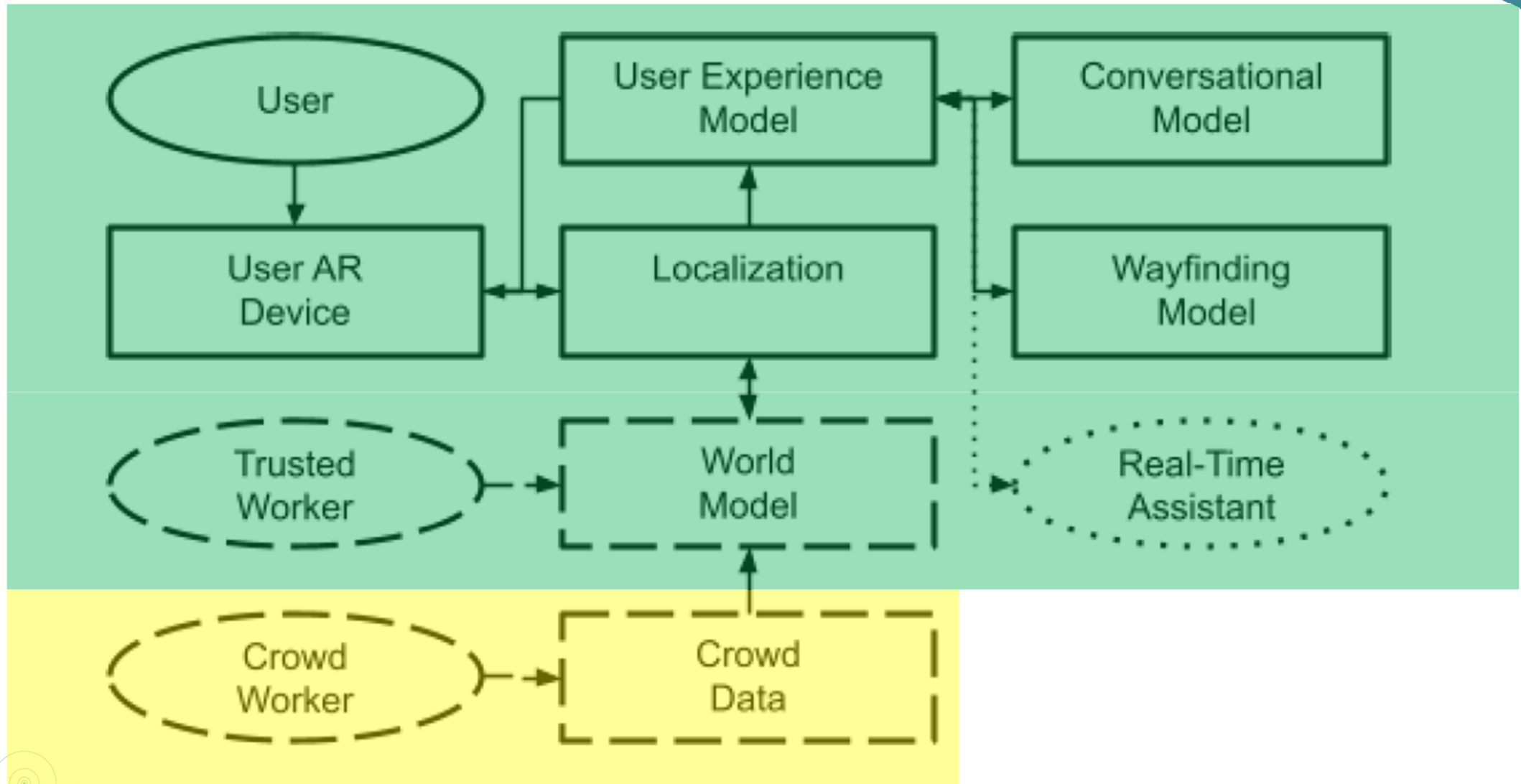


Accurate Distance detection



Object Recognition

Logical elements of the GoldenKey app



Logical elements of the GoldenKey system

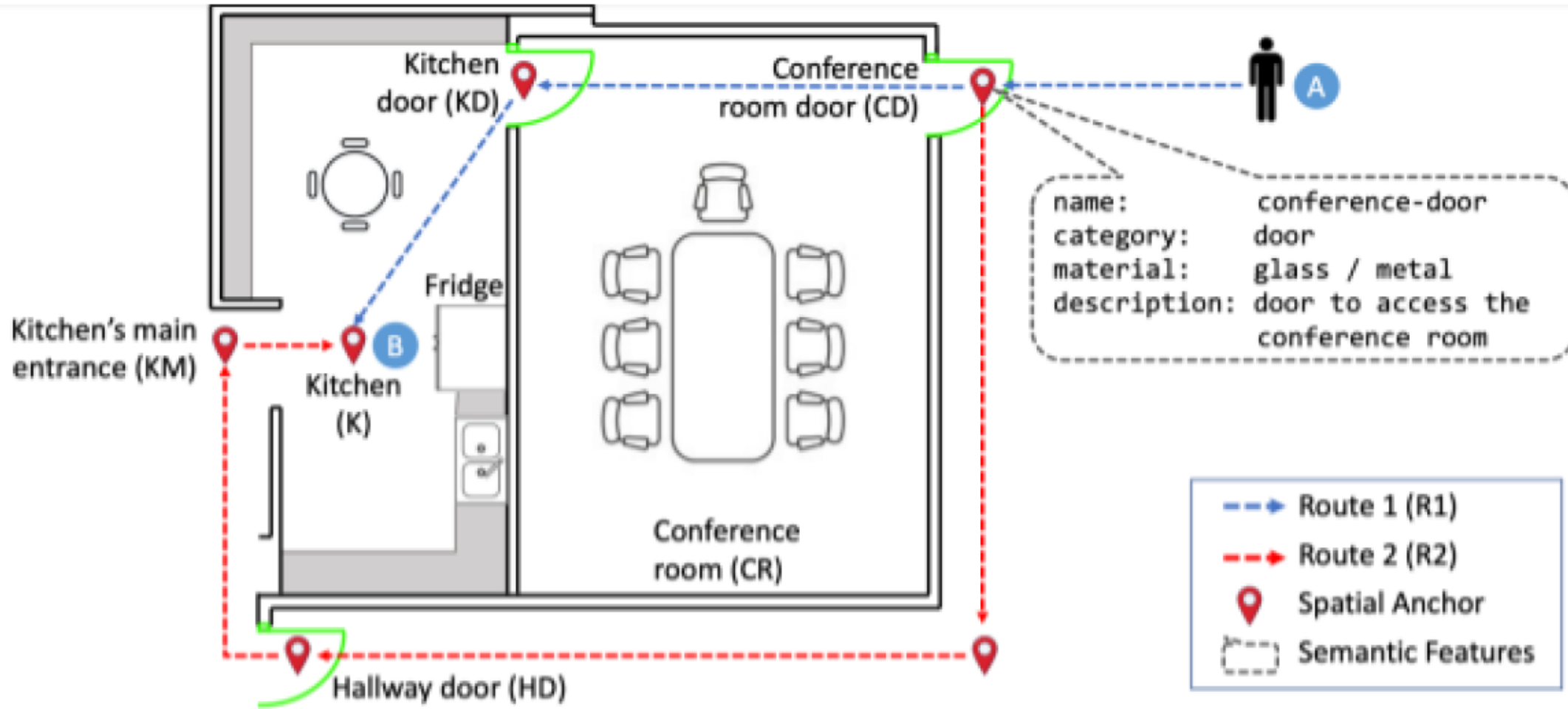
“Experiment in Conversational Navigation and Discovery for the Blind”

Carnegie Mellon University

Oscar Romero, Anthony Tomasic, John Zimmerman, Aaron Steinfeld

Copyright © 2022

Basic concept of anchors and attributes





WEST CONCOURSE A

A13

A11

A12

A10

- Need something else here about object recognition linkage to wayfinding corrections, POI announcements, etc. from the previous overhead map of the kitchen and conference room.
- Probably could use another more complicated diagram of a small section of an airport

- Prototype videos here, demonstrating that its working in a R&D mode



Ladders to Opportunity

- Map of spaces
 - Done – green
 - In process – yellow
 - Contracted / not started – red
 - Negotiations – on deck – grey

Traction LOG OUT

Device Status | Intersections (944/1133) | Alerts (2/2) | Central Commands (3/12)

Dashboard

Routes

User Trips

User Reports

Crowd Data

Waze

Work History

Help

Settings

Intersections On

3100: Market St.@Alamo St.

10000: Martin St.@Frio St.

11400: Pecos-La Trinidad@Houston St.

15300: Flores St.@Quincy St.

15900: Navarro St.-San Pedro Ave.

16600: Main Ave.@Lexington Ave.

17300: McCullough Ave.@Camden St.

17400: McCullough Ave.@Quincy St.

17900: Brooklyn Ave.@Quincy St.

23000: Broadway St.@9th St.

27800: Presa St.@Carolina St.

70500: Zazamora St.@Commerce St.

73300: Colorado St.@Martin St.

80000: Zazamora St.@Thompson Pl.

130600: Babcock Rd@Wilson Blvd.

135100: 36th St.@Woodlawn Ave.

160700: Blanco Rd.@Weizmann Blvd.

175400: San Pedro Ave.@Wildwood Dr.

177500: St. Marys St.@Camden St.

177600: St. Marys St.@Quincy St.

177800: St. Marys St.@Euclid Ave.

184000: Mulberry Ave@Shook Ave

Status Mountain City

Online	<input checked="" type="checkbox"/>	Green
Comm Fail	<input checked="" type="checkbox"/>	Yellow
Conflict	<input checked="" type="checkbox"/>	Blue
Flash	<input checked="" type="checkbox"/>	Red
Coord Fail	<input checked="" type="checkbox"/>	Purple
Disabled	<input checked="" type="checkbox"/>	Grey

New Work Entry CANCEL SAVE

Asset: 1642: Ouellette and Tecumseh

Work Performed By

Stas

Work Type

Replace bulb

Additional Details

Bulb out, replaced with new one. Noticed XYZ as well. Opened up...

Signals Work History

Date/Time	By	Type	Details
January 20, 2020	Joe	Stuck detector	Replaced push button on NW corner
November 18, 2019	Stas	Stuck Vehicle Detector	Replaced camera with new Autoscope
July 1, 2018	Mike	Stuck Vehicle Detector	Replaced loops with video detection



Seeking Agency Partners

Alpha → Pilot → Scale

Public Trust and Privacy

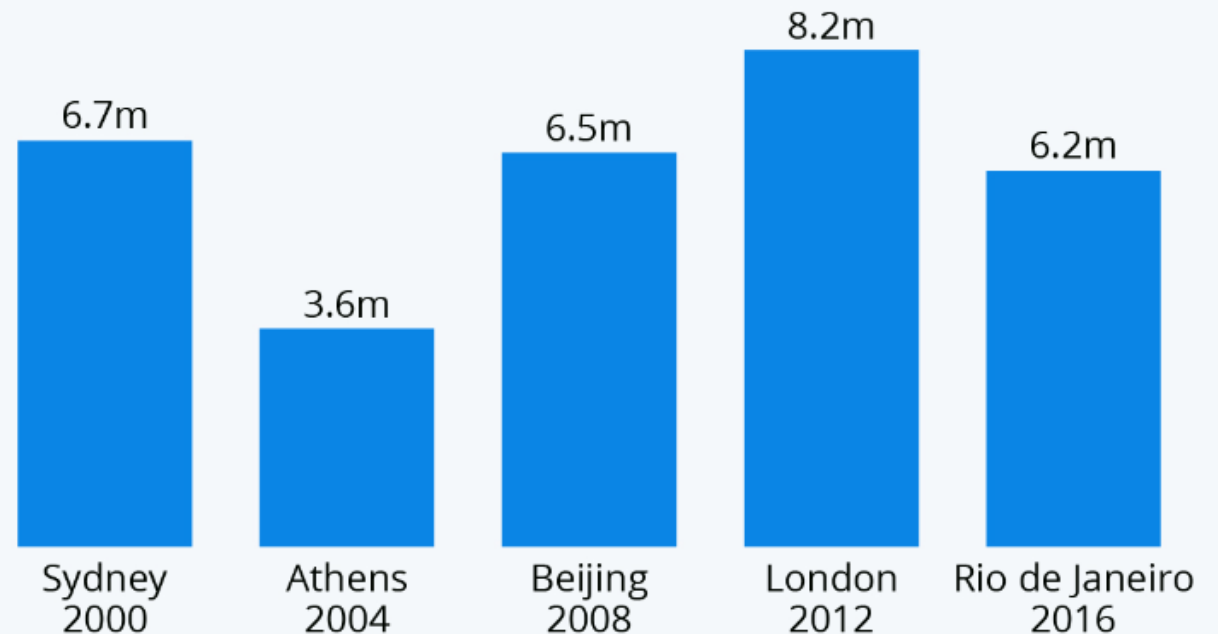
Project Proposal

The Olympics are coming to LA

- Millions (hundreds of thousands?) of unfamiliar foreign and non-native visitors
- Paralympics competitors, families, friends, supporters, and spectators

The Olympics Attract Millions of Spectators

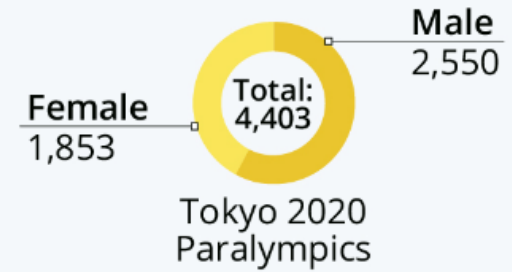
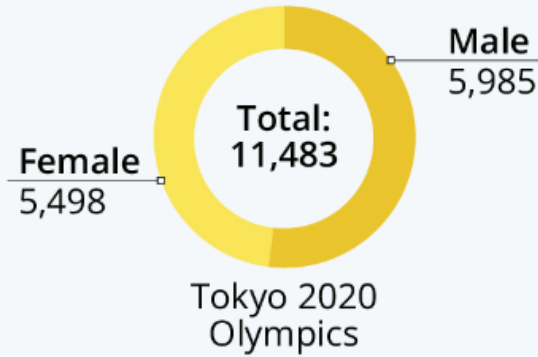
Number of tickets sold for the past five Summer Olympic Games



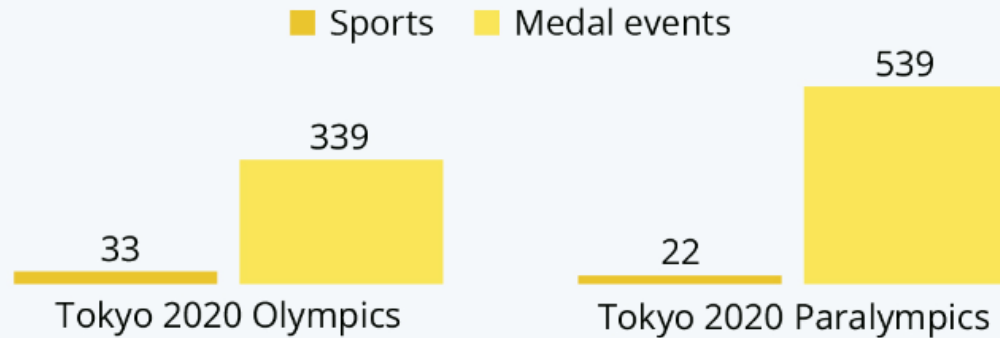
Where the Paralympics Beat the Olympics

Facts and figures on the Tokyo 2020/21 Olympics and Paralympics as well as World Athletics and Para Athletics records*

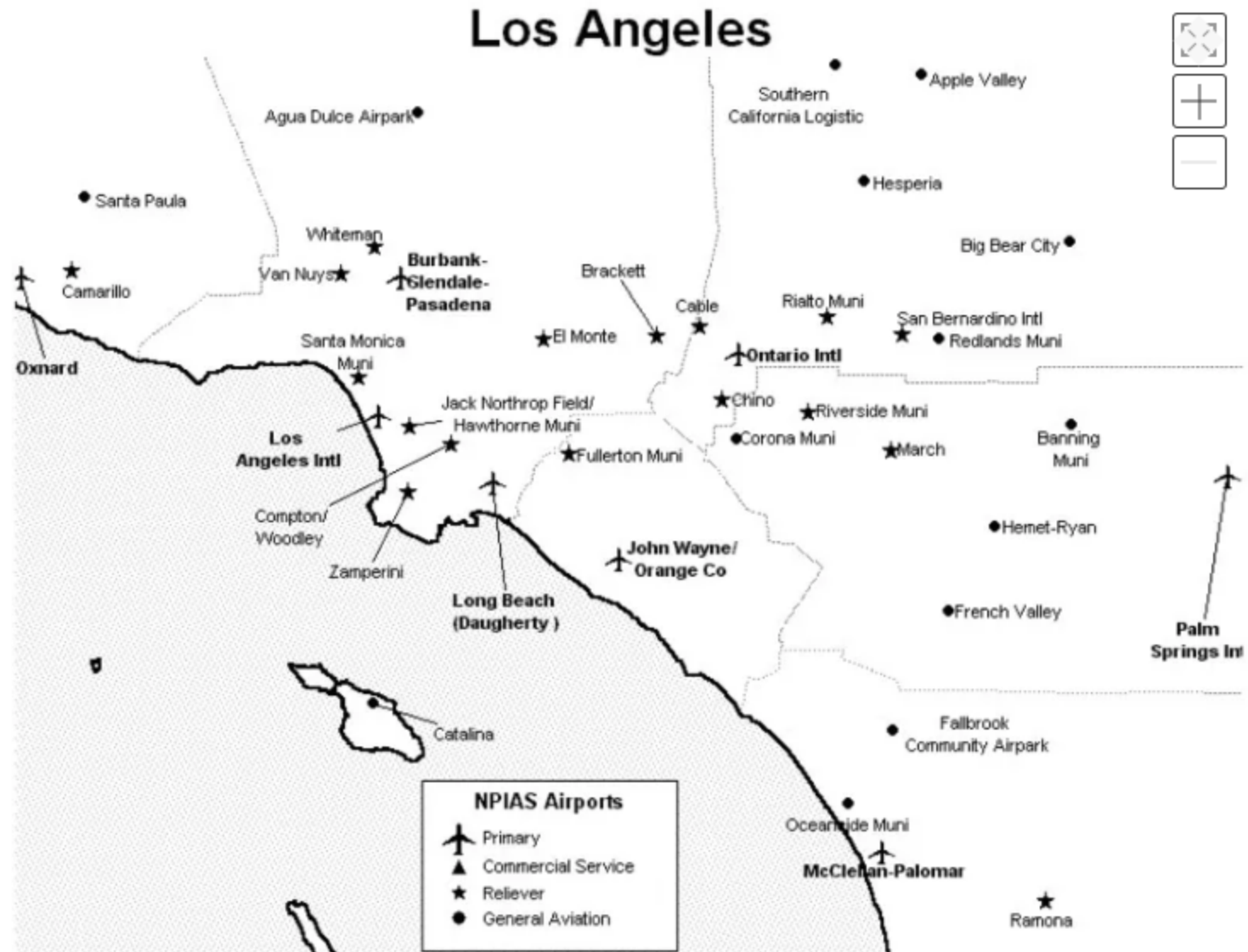
Number of participants



Number of competitions



- Map of airports in LA basin



Phase One

- Validation at LAX (TERMINAL X / Partial Terminal) and METRO Union Station (some landings? All?)
 - User app
 - Configuration app
- User experience training
- Ribbon Cutting & public relations
- Dec 2024 completion target

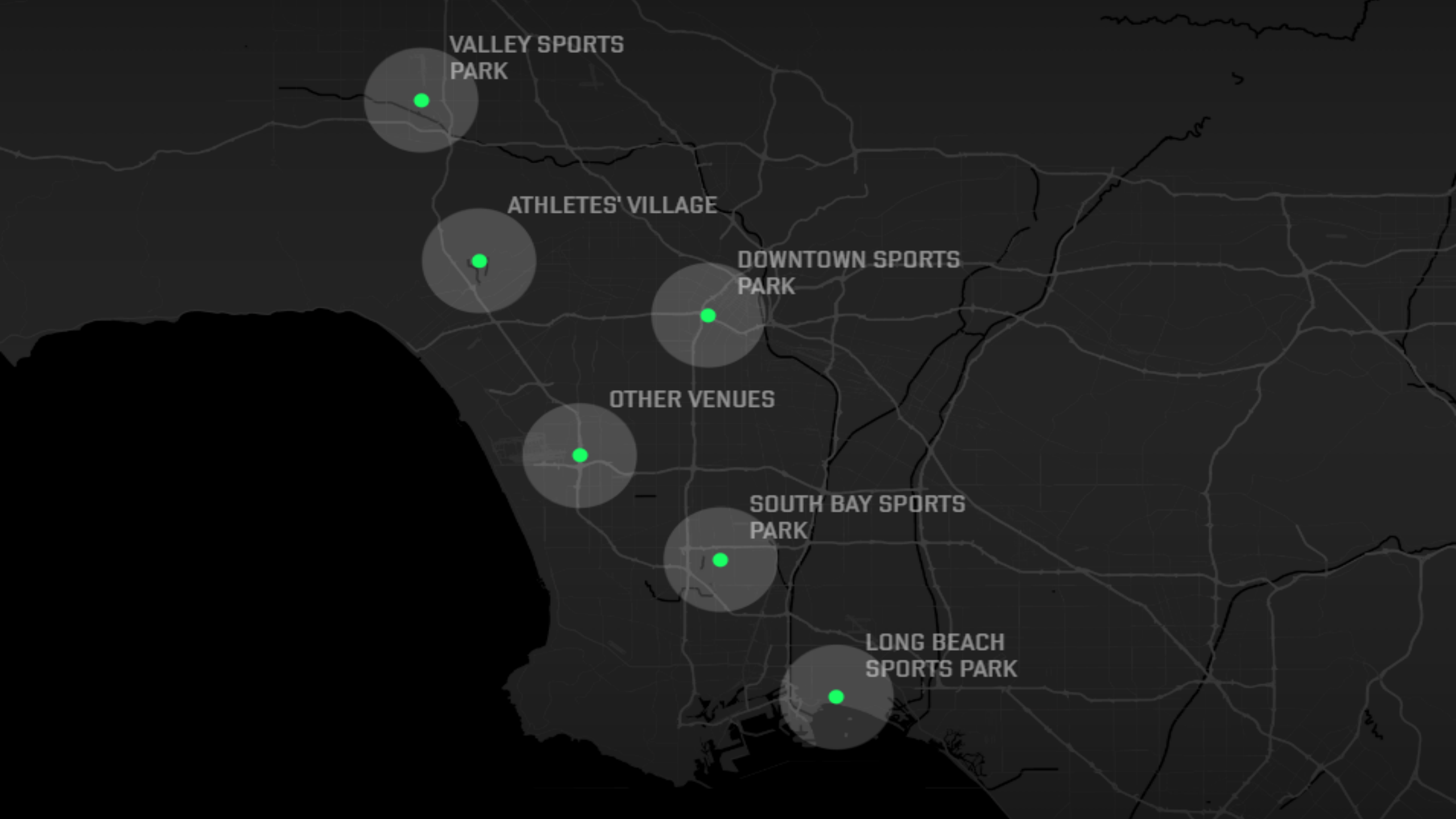
Phase Two

- Prioritized mapping of additional facilities (remainder of LAX / Union Station)
- Crowdsourcing strategy

Phase Three

- Validation at LAX (TERMINAL X) and METRO Union Station
 - User app
 - Configuration app
- User experience training
- Ribbon Cutting & public relations





VALLEY SPORTS
PARK

ATHLETES' VILLAGE

DOWNTOWN SPORTS
PARK

OTHER VENUES

SOUTH BAY SPORTS
PARK

LONG BEACH
SPORTS PARK





Municipal & Neighboring Bus Lines

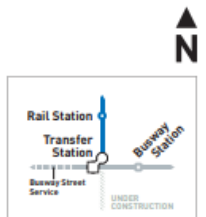
Agency	Service	Agency	Service	Agency	Service
Alhambra	Alhambra City Bus	Costa Mesa	Costa Mesa Municipal Bus	Long Beach	Long Beach City Bus
Banning	Banning City Bus	Dana Point	Dana Point City Bus	Orange	Orange Municipal Bus
Brea	Brea City Bus	Foothill	Foothill City Bus	Riverside	Riverside Municipal Bus
Chico Hills	Chico Hills City Bus	Fountain Valley	Fountain Valley City Bus	San Diego	San Diego Municipal Bus
Citrus	Citrus City Bus	Garden Grove	Garden Grove City Bus	San Marcos	San Marcos City Bus
Corona	Corona City Bus	Hemet	Hemet City Bus	San Juan Capistrano	San Juan Capistrano City Bus
Costa Mesa	Costa Mesa Municipal Bus	Industry	Industry City Bus	Santa Ana	Santa Ana City Bus
Dana Point	Dana Point City Bus	La Habra	La Habra City Bus	Westminster	Westminster City Bus
Diamond Bar	Diamond Bar City Bus	Lakewood	Lakewood City Bus	Yuba City	Yuba City City Bus
Duarte	Duarte City Bus	Orange	Orange Municipal Bus		
El Cerrito	El Cerrito City Bus				
Foothill	Foothill City Bus				
Fountain Valley	Fountain Valley City Bus				
Garden Grove	Garden Grove City Bus				
Hemet	Hemet City Bus				
Industry	Industry City Bus				
La Habra	La Habra City Bus				
Lakewood	Lakewood City Bus				
Orange	Orange Municipal Bus				
Riverside	Riverside Municipal Bus				
San Diego	San Diego Municipal Bus				
San Juan Capistrano	San Juan Capistrano City Bus				
Santa Ana	Santa Ana City Bus				
Westminster	Westminster City Bus				
Yuba City	Yuba City City Bus				

*Please be advised to check the most current service information with each agency or their website, posted information and public transit apps.

Metro Lines & Stations

Line	Stations
Blue Line	San Diego, Downtown Long Beach, Downtown Los Angeles, North Hollywood, Hollywood/Beverly Hills, Hollywood/Universal City, Hollywood/Verdugo Blvd
Orange Line	Orange, Santa Ana, Fullerton, Anaheim, Harbor
Gold Line	Long Beach, West Long Beach, West Broadway, West Broadway Station, West Broadway Station, West Broadway Station
Green Line	San Diego, Downtown Long Beach, Downtown Los Angeles, North Hollywood, Hollywood/Beverly Hills, Hollywood/Universal City, Hollywood/Verdugo Blvd
Purple Line	San Diego, Downtown Long Beach, Downtown Los Angeles, North Hollywood, Hollywood/Beverly Hills, Hollywood/Universal City, Hollywood/Verdugo Blvd





- Metro Rail**
 - A Line**
Azusa to Long Beach
 - B Line**
North Hollywood to Union Station
 - C Line**
Redondo Beach to Norwalk
 - D Line**
Wilshire/Western to Union Station
 - E Line**
Santa Monica to East LA
 - K Line**
Expo/Crenshaw to Westchester
- Metro Busway**
 - G Line**
Chatsworth to North Hollywood
 - J Line**
Downtown LA to San Pedro
Street Service in Downtown LA and San Pedro
- Regional Rail**
 - Amtrak**
amtrak.com
 - Metrolink**
metrolinktrains.com
- Airport Shuttle**
 - LAX FlyAway**
flyax.com/flyaway
 - LAX Shuttle (free)**
flyax.com

LONG BEACH SPORTS PARK

The Long Beach Sports Park will include events at the Long Beach Arena and along the Long Beach waterfront – including handball, the triathlon, swimming and sailing off the coast. Temporary venues will be constructed in Long Beach for BMX and water polo competitions.

Olympic

Paralympic

04. Long Beach Waterfront

[View venue](#)



04. Long Beach Waterfront



Long Beach, a coastal city and the second largest municipality in Los Angeles County, blends the urban sophistication of a big city with the relaxed atmosphere of a beach resort.



TRIATHLON

SOUTH BAY SPORTS PARK

South Bay Sports Park will host rugby, modern pentathlon, tennis, track cycling and field hockey. The South Bay will also be the home of the Paralympic wheelchair tennis, track cycling and football 5-a-side competitions.

Olympic

Paralympic

01. Dignity Health Sports Park Fields



03. Dignity Health Tennis Center



04. VELO Sports Center



[View venue](#)

03. Dignity Health Tennis Center



The Dignity Health Tennis Center, located in the Dignity Health Center, comprises the Dignity Health Tennis Stadium and 18 external courts. The Center has hosted world-class tennis, including the LA Women's Tennis Championships from 2003-2009.

← BACK

ATHLETES' VILLAGE

The University of Los Angeles, California's campus will host the world's greatest athletes as the Olympic and Paralympic Village. Olympians and Paralympians will benefit from UCLA's world-class residence, dining facilities and operational staff and training, as well as its medical and competition infrastructure.

Olympic

Paralympic

01. UCLA Campus



02. Pauley Pavillion

[View venue](#)



CLOSE X



02
Located in the picturesque Los Angeles neighborhood of Westwood, the University of California – Los Angeles (UCLA) is a renowned world-class academic institution with state-of-the-art sports, academic and housing facilities.

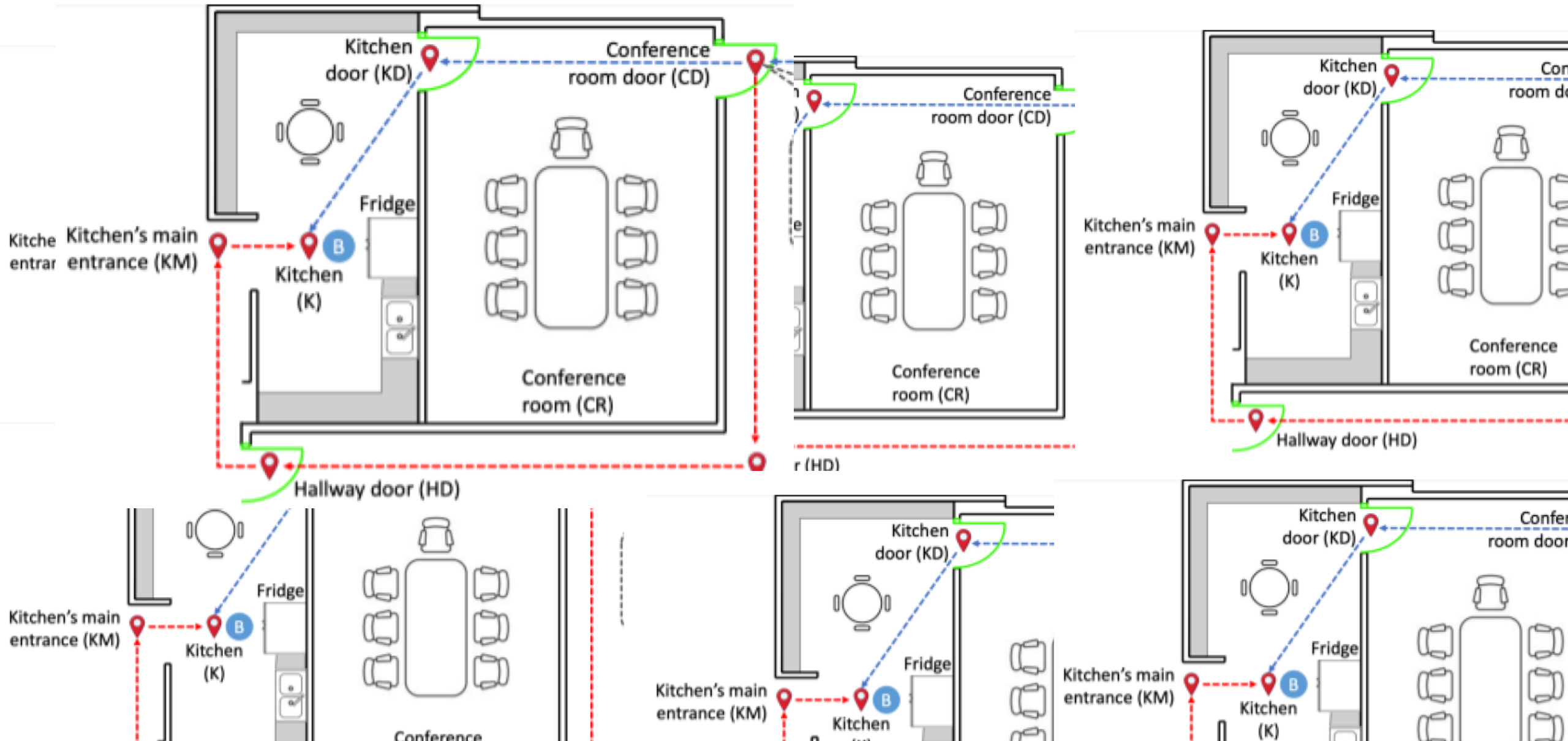


MAIN TRAINING CENTER



OLYMPIC VILLAGE

Space manager





Traction

LOG OUT

Device Status | Intersections (944/1133) | Alerts (2/2) | Central Commands (3/12)

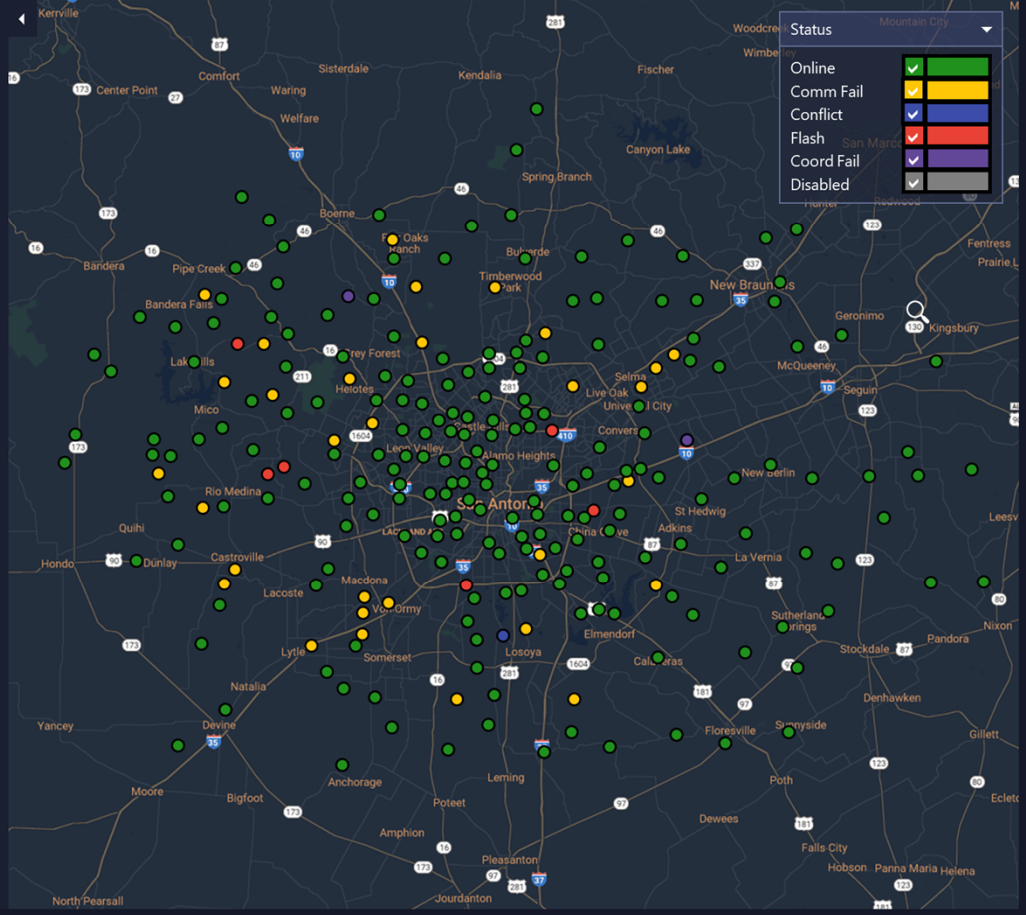
- Dashboard
- Routes
- User Trips
- User Reports
- Crowd Data
- Waze
- Work History
- Help
- Settings

Search

Intersections

On

- 3100: Market St.@Alamo St.
- 10000: Martin St.@Frio St.
- 11400: Pecos-La Trinidad@Houston St.
- 15300: Flores St.@Quincy St.
- 15900: Navarro St.-San Pedro Ave.
- 16600: Main Ave.@Lexington Ave.
- 17300: McCullough Ave.@Camden St.
- 17400: McCullough Ave.@Quincy St.
- 17900: Brooklyn Ave.@Quincy St.
- 23000: Broadway St.@9th St.
- 27800: Presa St.@Carolina St.
- 70500: Zarzamora St.@Commerce St.
- 73300: Colorado St.@Martin St.
- 80000: Zarzamora St.@Thompson Pl.
- 130600: Babcock Rd@Wilson Blvd.
- 135100: 36th St.@Woodlawn Ave.
- 160700: Blanco Rd.@Weizmann Blvd.
- 175400: San Pedro Ave.@Wildwood Dr.
- 177500: St. Marys St.@Camden St.
- 177600: St. Marys St.@Quincy St.
- 177800: St. Marys St.@Euclid Ave.
- 184000: Mulberry Ave@Shook Ave



Status

- Online ■
- Comm Fail ■
- Conflict ■
- Flash ■
- Coord Fail ■
- Disabled ■

New Work Entry CANCEL SAVE

Asset: 1642: Ouellette and Tecumseh

Work Performed By

Stas

Work Type

Replace bulb

Additional Details

Bulb out, replaced with new one. Noticed XYZ as well. Opened up...

Signals Work History

Date/Time	By	Type	Details
January 20, 2020	Joe	Stuck detector	Replaced push button on NW corner
November 18, 2019	Stas	Stuck Vehicle Detector	Replaced camera with new Autoscope
July 1, 2018	Mike	Stuck Vehicle Detector	Replaced loops with video detection



A dark gray background featuring a stylized, light gray silhouette of a city skyline at the bottom. The skyline includes various building shapes, some with grid patterns representing windows. On the left side, there are several overlapping, angular shapes that resemble a stylized sun or a series of overlapping planes, also in a light gray color.

Thank you!



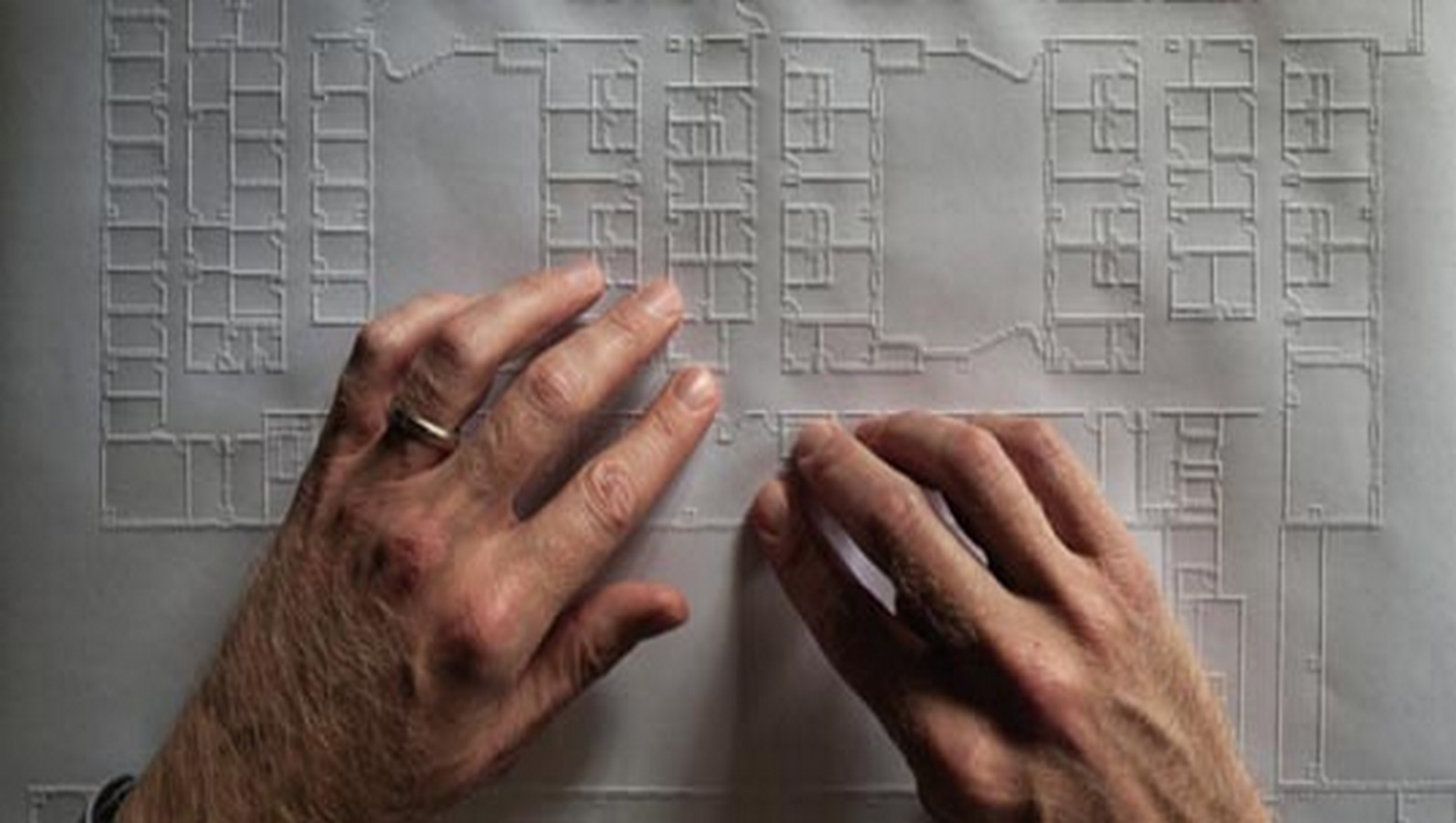
60
MINUTES



60
MINUTES







extras

Did you know?

More than 80% of sight-impaired do NOT read Braille.

Not all (percentage?) sight-impaired have or want a guide dog.

Sight-impaired and other disabled want independence, dignity, and privacy. Not assistance.

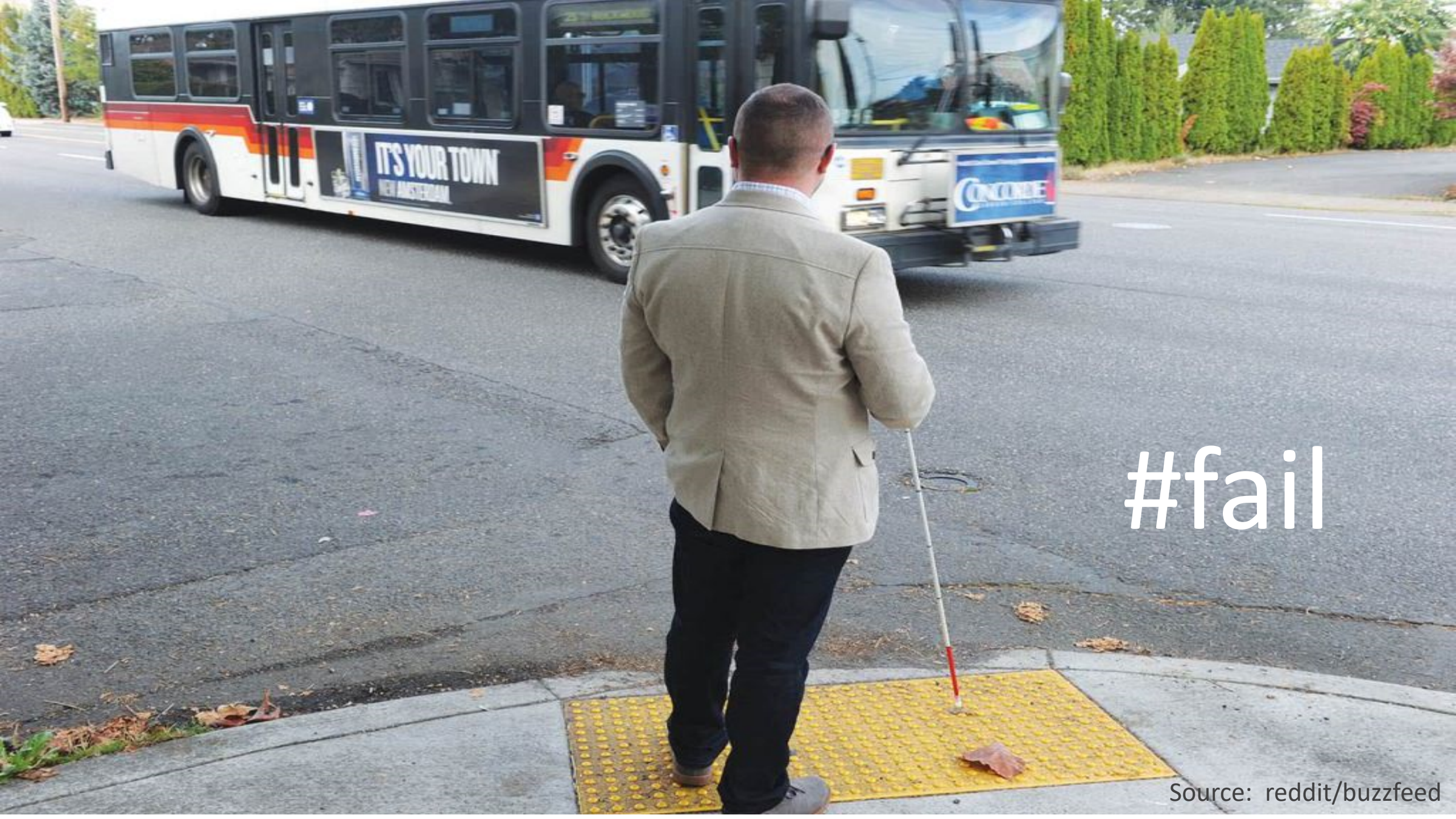
Sight-impaired generate mental maps similar to that of sighted persons, even when blind from birth.

XX% of blind were sighted at some time earlier in life.

#fail



Toilet Closed
Please use one
upstairs
Thank you.



#fail

Source: reddit/buzzfeed



NOTICE

To use the disabled lift, please
come upstairs to the buffet &
notify a member of staff so that
we can turn the power on.

Thank You







