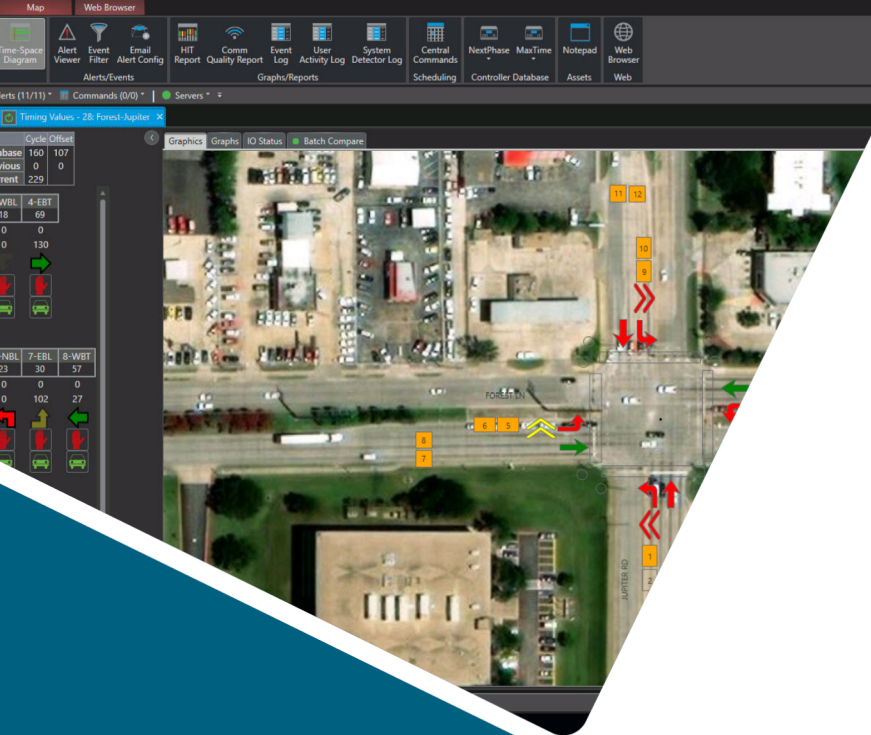


LEARN • COLLABORATE • SHARE • ENERGIZE



Kimley»»Horn

SMART CITIES

TECHNOLOGY FORUM

Data Sharing and Multi-Agency Support

»»KITS

A Kimley-Horn Software Solution

»»Kadence

A Kimley-Horn Software Solution

»»Traction

A Kimley-Horn Software Solution

Agenda

- Common data sharing needs
- Data sharing technical challenges
- Multi-agency solution examples
 - CDOT Regional ATSPM
 - SANDAG Next OS
- Workshop and Q&A

Common Data Sharing Needs

Why is Data Sharing Important?

- Jurisdictional boundaries are invisible to the average traveler
- Ownership, operation, and maintenance of ITS assets is often distributed to different entities
- “Big picture” understanding of operations facilitates better decision making and asset management
- Sharing data helps each agency play to their strengths, within their limitations





Data Sharing Technical Challenges

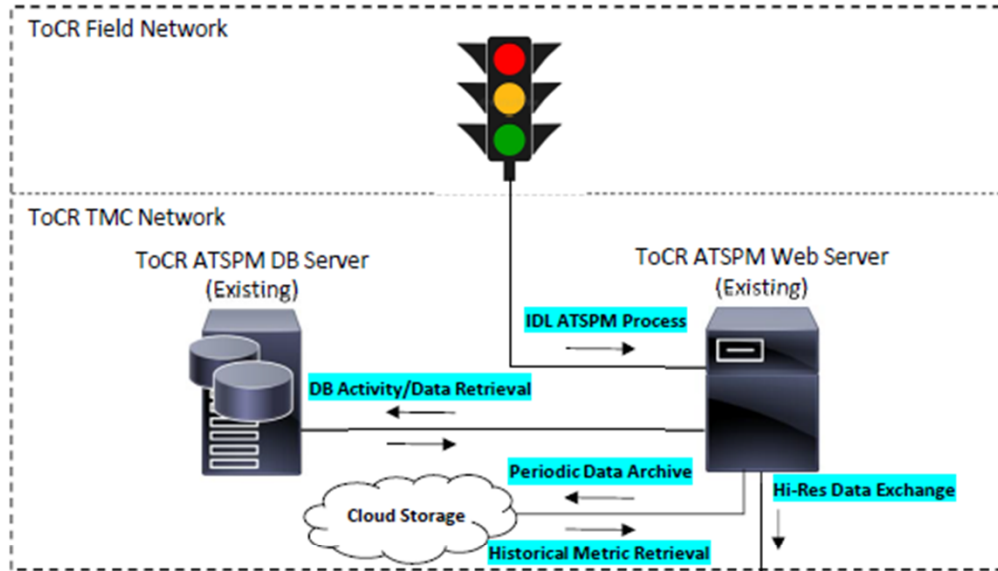
Common Challenges when Sharing Data

- Adherence to IT security policies
- Lack of data sharing support
 - Software customizations to add data sharing
 - Procurement of APIs from existing software
 - Procurement of new software/hardware with better APIs
- Lack of a standard data formats
- Lack of regional data sharing platforms
- Ongoing maintenance of data sharing components

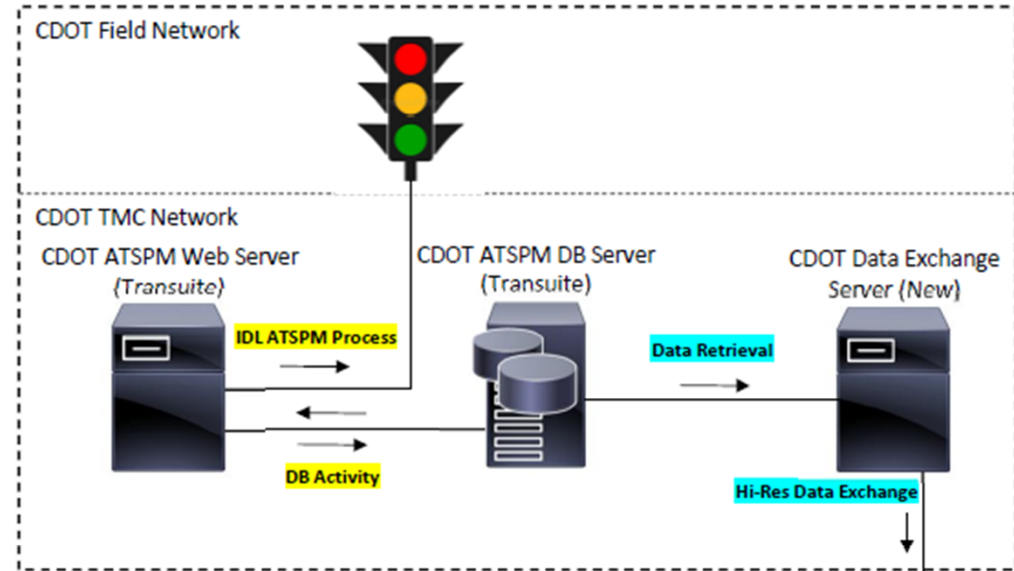
Multi-Agency Solution Examples

CDOT Regional ATSPM

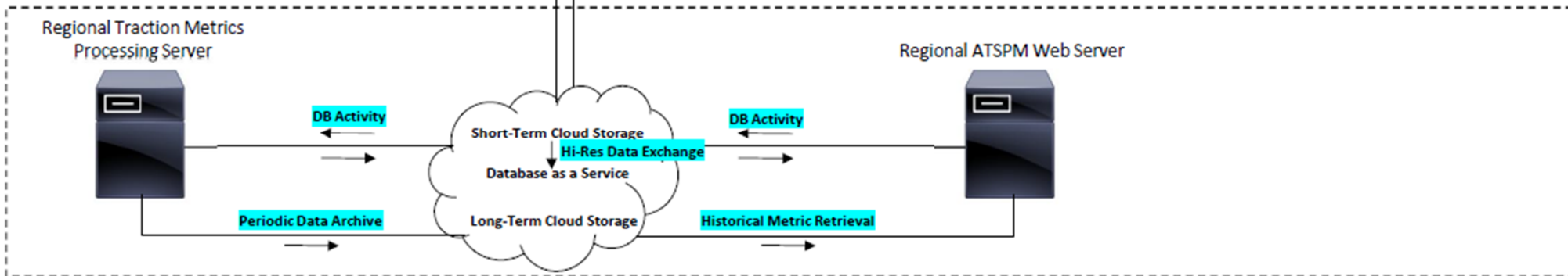
Castle Rock



CDOT



Proposed Google Cloud Environment



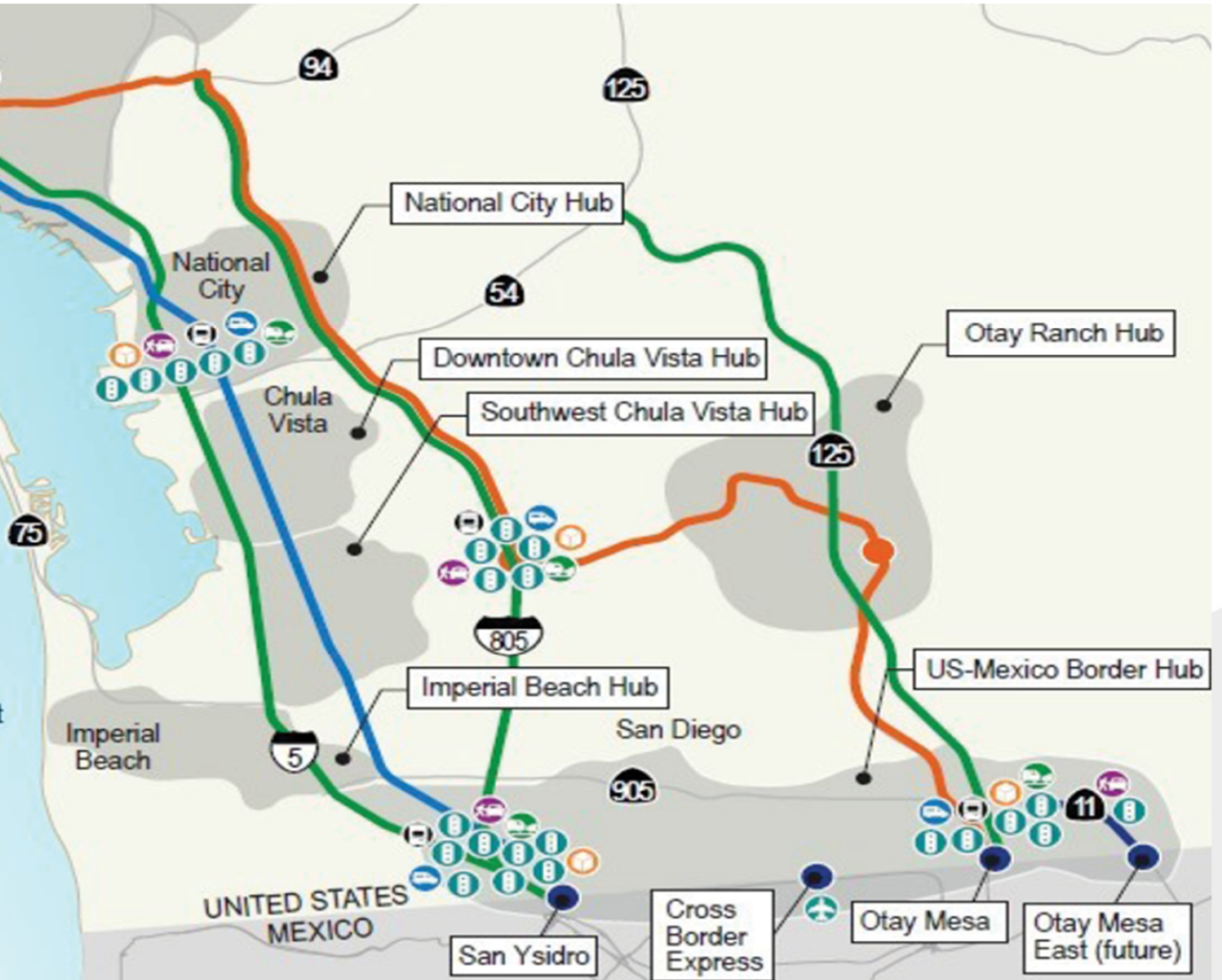
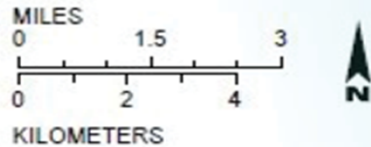
Blue — Kimley-Horn managed processes

Yellow — Existing, non-Kimley-Horn managed processes

SANDAG Next OS

Advancing Border Connectivity and the Economy through Technology in the San Diego Region

- Mobility Hub
- South Bay Rapid (existing)
- Blue Line Trolley (existing)
- Next Gen ICMS
- Park-&-Ride Lot (existing)
- Port of Entry
- Airport
- Smart intersections
- Parcel Delivery Lockers
- Flexible Fleets (MaaS)
- On-Demand Shuttle
- Dynamic Curb Lane Management
- Interactive Travel Kiosk

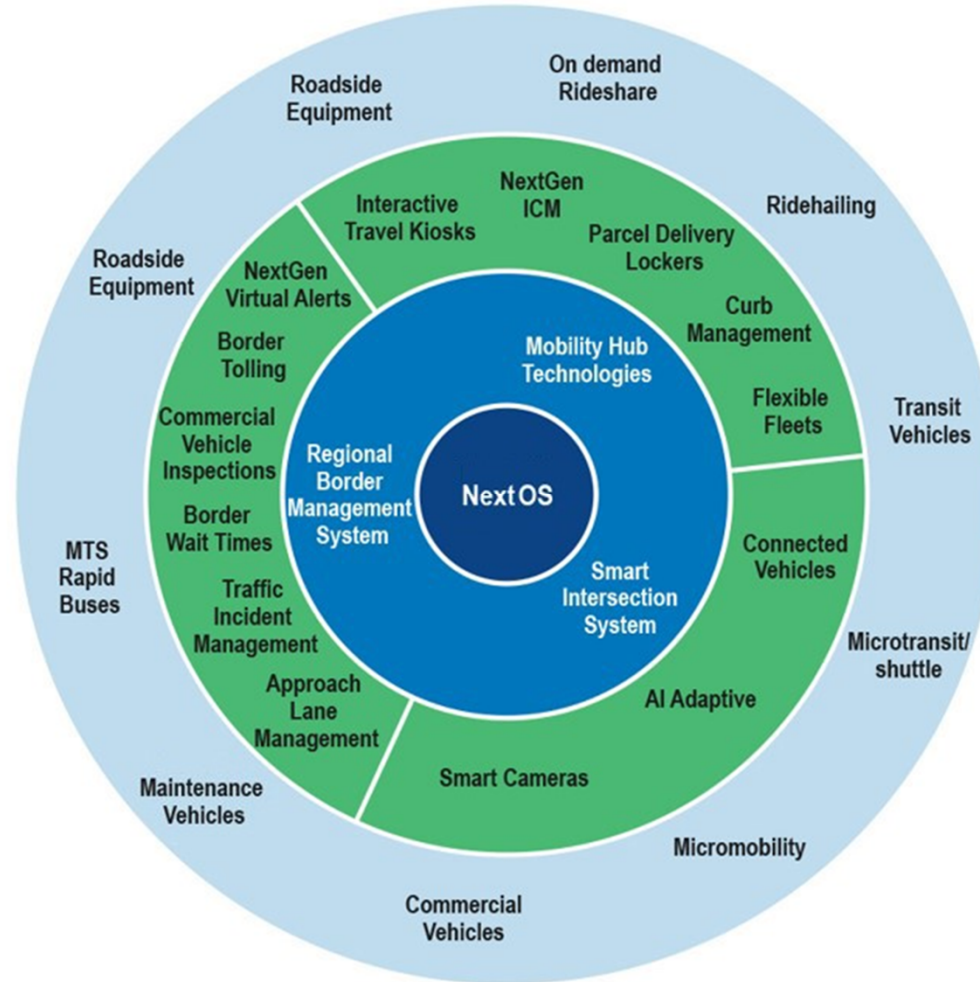


SANDAG Next OS





SANDAG Next OS



SANDAG Next OS

- External stakeholder outreach strategy
 - Project development team meetings
 - Coordination meetings with partner agencies and related efforts (e.g., OME project)
 - Prioritization workshops
 - Field visits
- Internal stakeholder coordination (e.g., SANDAG sustainable communities working group)

Workshop and Q&A

Useful Datasets and Use Cases

- What datasets are you sharing today and how?
- What data do you need that you aren't currently getting?
- How much do you coordinate with your agency partners today?
- How can you help your agency partners?
- How can your agency partners help you?

Thank You!

